

Research article

[urn:lsid:zoobank.org:pub:C82E9877-EAB4-41B1-A73A-0687C94D9472](https://zoobank.org/pub:C82E9877-EAB4-41B1-A73A-0687C94D9472)

Two new species of Hyalojassini (Hemiptera: Cicadellidae: Iassinae) to the genera *Comanopa* Blocker and *Gehundra* Blocker, description of the male of *G. sordida* (Baker) and key to species

Alexandre C. DOMAHOVSKI

Departamento de Zoologia, Universidade Federal do Paraná. Caixa Postal 19020,
81531-980 Curitiba, PR, Brazil.

Email: domahovskiac@yahoo.com.br

 <https://orcid.org/0000-0003-4588-4236>

[urn:lsid:zoobank.org:author:0B988BD5-599B-42CE-ADCB-50FC813E104E](https://zoobank.org/author:0B988BD5-599B-42CE-ADCB-50FC813E104E)

Abstract. *Comanopa* Blocker, 1979 and *Gehundra* Blocker, 1976 are small and poorly known genera of leafhoppers, previously comprising four and five species, respectively. In this study, two new species are proposed: *Comanopa mananciensis* sp. nov. from the state of Paraná, Southern Brazil, and *Gehundra cristalinensis* sp. nov. from the state of Mato Grosso, Centralwestern Brazil. The male of *Gehundra sordida* (Baker, 1900) is studied by the first time. Detailed descriptions and illustrations of males and females are provided and keys to males of *Comanopa* and *Gehundra* are given.

Keywords. Auchenorrhyncha, leafhoppers, morphology, Neotropical region, taxonomy.

Domahovski A.C. 2021. Two new species of Hyalojassini (Hemiptera: Cicadellidae: Iassinae) to the genera *Comanopa* Blocker and *Gehundra* Blocker, description of the male of *G. sordida* (Baker) and key to species. *European Journal of Taxonomy* 746: 112–129. <https://doi.org/10.5852/ejt.2021.746.1323>

Introduction

Cicadellidae Latreille, 1825 is the largest family of Hemiptera Linnaeus, 1758 and one of the most successful radiations of plant-feeding insects known as leafhoppers, currently classified into 25 subfamilies (Krishnankutty *et al.* 2016). The Neotropical region has the richest fauna of leafhoppers, with more than 5000 described species (Freytag & Sharkey 2002).

The subfamily Iassinae Walker, 1870 is distributed worldwide and is one of the most diverse subfamilies of Cicadellidae, including more than 2000 species currently placed in 184 genera and 12 tribes (Dai *et al.* 2015; Krishnankutty *et al.* 2016; Domahovski 2020; Dietrich *et al.* 2020). In the New World, Iassinae comprises approximately 113 genera and 1566 species belonging to six tribes: Bythoniini Linnavuori, 1959; Gyponini Stål, 1870; Hoplojassini Krishnankutty *et al.*, 2016; Lipokrisnini Krishnankutty *et al.*, 2016; Selenomorphini Evans, 1974; and Hyalojassini Evans, 1972 (Dai & Dietrich 2015; Krishnankutty *et al.* 2016; Gaiani 2017; Freytag 2018; Domahovski 2019, 2020; Domahovski & Cavichioli 2019a, 2020; Domahovski *et al.* 2020; Gonçalves *et al.* 2020).

Hyalojassini comprises small and ovate leafhoppers, between 3.5 to 8.0 mm in length, which can be recognized mainly by the head usually rounded in profile, without distinctly delimited crown; the forewing with inner apical cell usually more membranous than adjacent cells; the hind wing with veins R4+5 and M1+2 confluent distally; male subgenital plates usually very short or vestigial and completely concealed by pregenital sternite; and the female genitalia with first valvula with dorsal sculpturing usually areolate and second valvula with few widely spaced dorsal teeth (Krishnankutty *et al.* 2016). Hyalojassini is distributed in SE Asia (9 genera and 32 species) and the New World (29 genera and 117 species), representing an interesting biogeographical disjunction (Dai *et al.* 2015; Krishnankutty *et al.* 2016; Wang *et al.* 2018; Domahovski & Cavichioli 2019c; Domahovski 2020). Although most of the of hyalojassine species are described from the Neotropical region (more than 70% of the known species), the real diversity of the tribe remains poorly known, especially in Brazil, where only 12 genera and 21 species were previously recorded (Defea & Paradell 2019; Domahovski & Cavichioli 2019b, 2019c; Domahovski 2020).

Blocker (1976) described the genus *Gehundra* with three new species from Peru, *Gehundra tricola* (type species), *G. avulsa* and *G. galbina*, each known from a single male specimen, and provided a key to the species. Blocker (1979) transferred *Bythoscopus pallidus* Osborn, 1924 and *Macropsis sordidus* Baker, 1900 to *Gehundra*, both species known from a single female specimen from Brazil.

Comanopa was described by Blocker (1979) with *Stragania puertoricensis* Caldwell, 1952 from Puerto Rico (type species), *Stragania fasciata* Linnavuori, 1956 from Brazil (only known by female specimens) and one species described as new, *Comanopa adelpha* from Panamá and Mexico. Blocker (1982) described the last species, *Comanopa hamiltoni* from Jamaica.

This study aims to contribute to the knowledge of Hyalojassini by describing two new species belonging to the genera *Comanopa* and *Gehundra*. Additionally, one male and four females of *Gehundra sordida* (Baker, 1900), from the state of Mato Grosso do Sul, Centralwestern Brazil, are studied and the male and female genitalia are described for the first time.

Material and methods

The descriptive terminology adopted herein follows mainly Young (1968, 1977), except for head features (Hamilton 1981; Mejdalani 1998), wings (Dietrich 2005) and leg chaetotaxy (Rakitov 1997). The term gonoplac follows Mejdalani (1998) and pseudostyle (thickened portion along the inner margin of the subgenital plate) follows Kramer (1963) and Blocker (1979). The techniques used for dissection of male and female terminalia follow Oman (1949), with the few modifications described by Cavichioli & Takiya (2012). The dissected parts are stored in microvials with glycerin which are pinned below the specimen.

Illustrations were prepared according to the procedures described by Domahovski & Cavichioli (2019b). Label data are specified between quotation marks, with a backslash (\) separating the lines on the labels. Square brackets ([]) are used to additional abbreviated information.

The specimens are deposited in the Coleção Entomológica Pe. Jesus Santiago Moure, Universidade Federal do Paraná, Curitiba, Brazil (DZUP) and Coleção Entomológica Prof. José Alfredo Pinheiro Dutra, Departamento de Zoologia, Instituto de Biologia, Universidade Federal do Rio de Janeiro, Rio de Janeiro, Brazil (DZRJ).

Abbreviations

AD = anterodorsal
AV = anteroventral

PD = posterodorsal
PV = posteroventral
IC = intercalary

Results

Class Insecta Linnaeus, 1758
Order Hemiptera Linnaeus, 1758
Suborder Auchenorrhyncha Duméril, 1806
Infraorder Cicadomorpha Evans, 1946
Superfamily Membracoidea Rafinesque, 1815
Family Cicadellidae Latreille, 1825
Subfamily Iassinae Walker, 1870
Tribe Hyalojassini Evans, 1972
Genus *Comanopa* Blocker, 1979

Type species

Stragania puertoricensis Caldwell, 1952.

Diagnosis

Forewing (Fig. 1) with vein separating appendix and first apical cell incomplete (evanescent apically). Male pygofer (Fig. 6) with process (pygofer hooks) arising near apex, extending anterad, similar to *Penestragania* Beamer & Lawson, 1945. Subgenital plate (Fig. 8) simple, slightly reduced in size, similar to *Momoria* Blocker, 1979. Style (Fig. 9) reduced in length. Connective (Fig. 9) like a narrow semicircular band.

Comanopa mananciensis sp. nov.

[urn:lsid:zoobank.org:act:1496BF6F-94E4-4E89-92EB-1E7457C88C06](https://zoobank.org/act:1496BF6F-94E4-4E89-92EB-1E7457C88C06)

Figs 1–12

Diagnosis

Head and thorax (Figs 1–3) brownish-yellow. Face (Fig. 3) with crown-face transition black. Male pygofer (Figs 5–7) with pair of processes arising near base of plates, short and rounded apically; ventral margin of pygofer strongly produced ventrad. Aedeagus (Figs 11–12) with shaft deeply split apically, whit pair of subapical processes directed laterally.

Etymology

The new species name refers to the locality (Mananciais da Serra) where the holotype was collected.

Material examined

Holotype

BRAZIL • ♂; “Brasil, Paraná, Piraquara, Ma-\nanciais da Serra, 25°29’47”S\48°58’54”W 1021m, Sweep,\21-28.XI.2018, A.P. Pinto, B.R. \Araujo & A.C. Domahovski”; DZUP 215440.

Paratype

BRAZIL • 1 ♂; “Brasil, PR [Paraná], S. [São] J. [José] dos Pinhais\Rep. [Represa] Guaricana, Luz\25.7150°S 48.9711°W\750 a 400m 12-14.XII.2017\Cavichioli & Domahovski”; DZUP 215441.

Description**Male**

MEASUREMENTS (mm). Holotype (♂) total length 3.8. Paratype (♂) 4.0.

BODY. Small and ovate leafhoppers, not depressed dorsoventrally.

HEAD (Figs 1–3). Dorsal view: very short, transocular width nine-tenths humeral width of pronotum; crown not developed, nearly vertical, median length $\frac{1}{10}$ of interocular width, surface with transverse striae; anterior and posterior margins parallel and broadly rounded; ocelli not visible dorsally; lateral view: crown-face transition broadly rounded with transverse striae; frons slightly inflated; clypeus almost flat; ventral view: face less than two times wider than high; ocelli small, on anterior margin, mesad of antennal pits and distant from eyes; frons with transverse striae, lateral margins strongly convergent ventrally; frontogenal suture extending to antennal ledges; antennal ledge carinate and slightly oblique, not concealing antennal base; antenna length ca $\frac{1}{3}$ width of head; gena broad, with small setae; ventrolateral margin broadly rounded, completely concealing proepisternum; maxillary plate produced ventrally as far as clypeus apex; lorum broad, with short setae, maximum width approximately equal to that of clypeus, subgenal suture rounded, extended nearly to midlength of lateral margin of frons; clypeus slightly longer than wide, epistomal suture complete and straight, lateral margins parallel, apex carinated and straight.

PRONOTUM (Figs 1–2). Dorsal view: anterior margin broadly rounded, posterior margin slightly excavated; surface without setae, with transverse striae, except on anterior third; lateral margins convergent anterad, carinate, slightly shorter than eye length; lateral view: convex and declivous anterad.

MESONOTUM AND SCUTELLUM (Fig. 1). Dorsal view: as long as pronotum length; surface with transverse striae; scutellum flat.

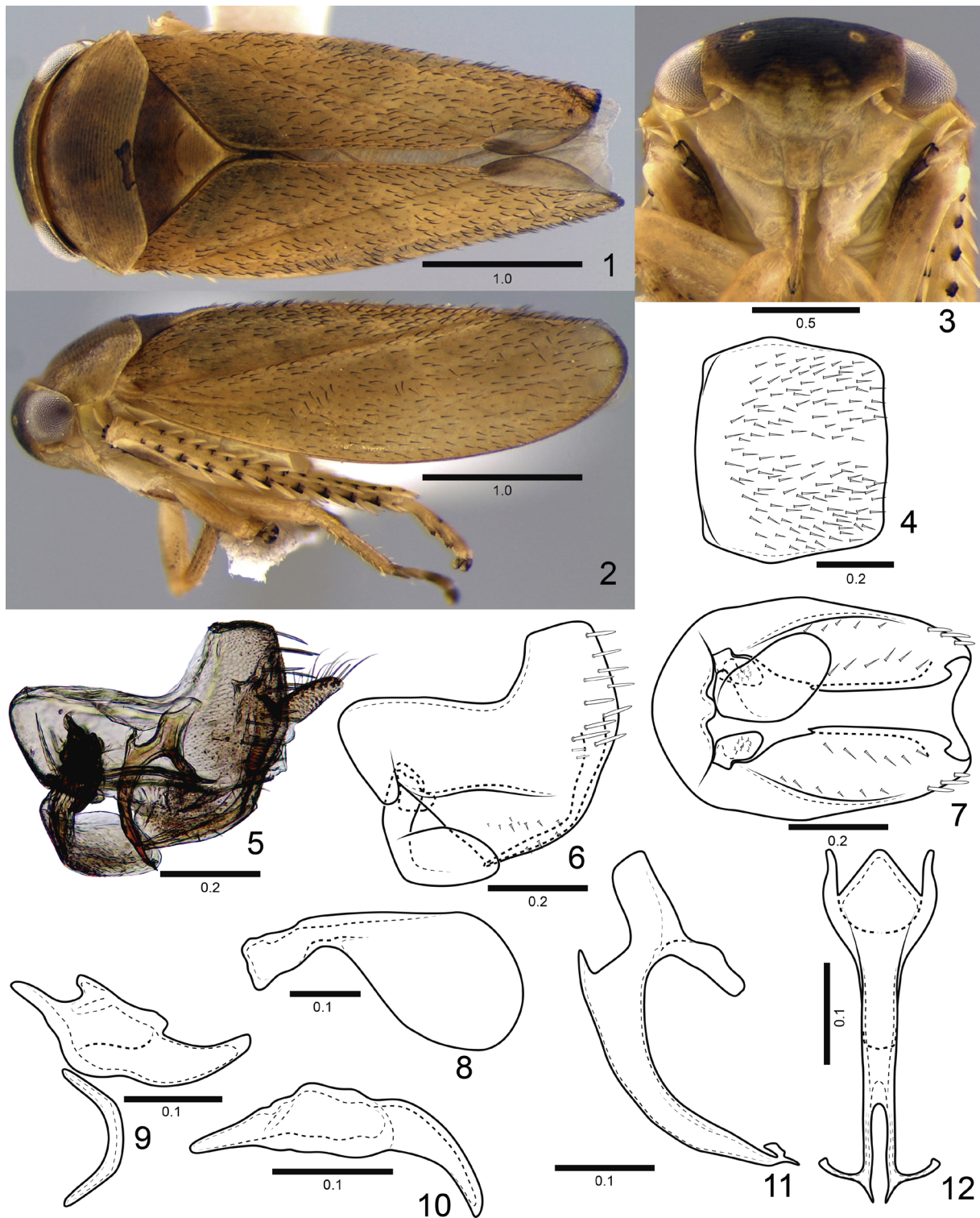
FOREWING (Figs 1–2). Many small erect setae, venation obscure; clavus truncate apically; appendix and first apical cell more membranous than adjacent cells, glabrous, vein separating appendix and first apical cell evanescent apically; 3 closed anteapical cells and 4 apical cells (2nd, 3rd and 4th cells short; R1 vein absent).

HIND WING. Veins R4+5 and M1+2 fused apically.

LEGS. Profemur moderately elongated, 2.7 times longer than high; PD, AD and AM rows formed by undifferentiated setae, PD1 and AD1 setae short and AM1 absent; IC row formed by double row of fine setae, continuous with AV row; AV and PV rows formed by several fine setae. Protibia, in cross-section, almost circular; AV row formed by short, thin setae in the basal half and slightly more robust setae distally; AD row consisting of only undifferentiated setae; PD row with 3 long setae intercalated by undifferentiated setae; PV row with 3–4 long setae intercalated by undifferentiated setae. Hind leg with femoral setal formula 2:2:1; PD2 seta reduced in size; metatibia PD, AD and AV rows with 15–16, 9–10 and 9–10 macrosetae respectively; AD row without intercalary setae between macrosetae; PV row with setae of apical half intercalating 1 longer and thicker seta and 3–4 shorter and thinner setae, ending with 2 very short, thin setae; first tarsomere without enlarged dorsoapical seta; ventral surface with two longitudinal rows of simple (non-cucullate) thin setae; pecten with 4 platellae flanked by tapered lateral setae; second tarsomere pecten with 2 platellae flanked by tapered lateral setae.

COLORATION. Head and thorax (Figs 1–3) brownish-yellow. Face (Fig. 3) with crown-face transition black. Mesonotum (Fig. 1) dark brown; scutellum brownish-yellow with lateral margins light-yellow. Forewing (Figs 1–2) with black setae. Legs (Figs 2–3) hind tibia with cucullate bases of macrosetae black.

TERMINALIA. Sternite VIII (Fig. 4) convex, moderately produced posterad, 1.2 times wider than long, shorter than sternites VII and VI combined; ventral surface with many small setae; lateral angles



Figs 1–12. *Comanopa mananciensis* sp. nov., holotype, ♂ (DZUP 215440). 1. Habitus, dorsal view. 2. Habitus, lateral view. 3. Head, ventral view. 4. Sternite VIII, ventral view. 5. Genital capsule, lateral view. 6. Pygofer, valve and subgenital plate, lateral view. 7. Pygofer, valve and subgenital plate (left subgenital plate removed), ventral view. 8. Subgenital plate, ventral view. 9. Connective and style, dorsal view. 10. Style, lateral view. 11. Aedeagus, lateral view. 12. Aedeagus, anterior view. Scale bars in mm.

rounded; posterior margin straight. Valve (Figs 5–7) broadly fused laterally to pygofer; ventral margin excavated laterad of small median lobe. Pygofer (Figs 5–7) with pair of processes arising near base of plates, short and rounded apically, ventral surface with short setae. In lateral view, pygofer (Fig. 6) higher on apical half; dorsal margin widely notched on basal $\frac{2}{3}$; dorsoposterior margin fused to pygofer lobes; ventral margin strongly produced ventrad, with short setae forming two longitudinal lines, internal process fused to pygofer lobe, arising near apex and bordering ventral margin, forming a small dentiform protrusion near apex of subgenital plate; lateral surface with longitudinal carina on basal $\frac{2}{3}$; apex very wide and truncated; few macrosetae dispersed near apex. Anal tube (Fig. 5) membranous, without processes. Subgenital plate (Figs 5–8) short, not overlapping pygofer laterally, produced posteriorly as far as half length of pygofer; ventral surface without setae; anterior portion elongated and curved dorsally; apical portion expanded and ovate; apex rounded. Connective (Fig. 9), thin, slightly arched bar. Style (Figs 9–10), short, not surpassing apex of subgenital plates; apex curved ventrad in lateral view; apex subacute, slightly curved outward in dorsal view. In lateral view, aedeagus (Fig. 11) with preatrium moderately developed, produced anterad; dorsal apodeme developed, anterior margin forming pair of flattened divergent arms truncated apically, directed dorsally, posterior margin produced ventrally; shaft directed ventrally, slightly curved posterad and tapered apically. In anterior view, aedeagus (Fig. 12) with shaft deeply split apically, with pair of subapical processes long, directed laterally; gonopore subapical.

Female

Unknown.

Remarks

The known species of *Comanopa* have subgenital plates and styles very similar to each other, but can be separated by the shape of pygofer and aedeagus. *Comanopa mananciensis* sp. nov. can be easily recognized by the pygofer (Fig. 6) with ventral margin strongly produced ventrad and the aedeagus (Fig. 12) deeply split apically, with pair of long subapical processes, directed laterally.

Key to males of *Comanopa* (*C. fasciata* only known from the female)

1. In posterior view, aedeagus without subapical processes 2
 - In posterior view, aedeagus with subapical processes (Fig. 12) 3
2. Pygofer with processes poorly developed, not exceeding the ventral margin (Blocker 1982: 646, fig. 28). In posterior view, aedeagus not split apically *C. hamiltoni* Blocker, 1982 (Jamaica)
 - Pygofer with processes developed, exceeding the ventral margin (Blocker 1979: 37, fig. 77). In posterior view, aedeagus split apically *C. puertoricensis* (Caldwell, 1952) (Puerto Rico)
3. In posterior view, aedeagus with subapical processes very short, triangular-shaped (Blocker 1979: 37, fig. 79) *C. adelpha* Blocker, 1979 (Panama)
 - In posterior view, aedeagus with subapical processes long, directed laterally (Fig. 12) *C. mananciensis* sp. nov. (Brazil)

Genus *Gehundra* Blocker, 1976

Type species

Gehundra tricola Blocker, 1976.

Diagnosis

Body (Figs 13, 32) moderately large and robust. Forewing (Figs 13, 32) with groups of black setae on apical half and vein separating appendix and first apical cell complete. Male sternite VIII

(Figs 16, 35) very long, reaching the apex of pygofer, in repose. Pygofer with (Figs 17–18) or without (Figs 37–38) long setae on ventral margin. Subgenital plate (Figs 18, 20, 37, 39) with external margin lobed, overlapping the lateral portion of pygofer and with well developed pseudostyles. Connective amorphous

Gehundra cristalinensis sp. nov.

[urn:lsid:zoobank.org:act:25FBE065-ECF1-4D42-9AF4-A82F25D83058](https://doi.org/10.25318/urn:lsid:zoobank.org:act:25FBE065-ECF1-4D42-9AF4-A82F25D83058)

Figs 13–31

Diagnosis

Male pygofer (Figs 17–19) ventral margin with long thin setae on apical half. Subgenital plate (Figs 17–20) with external margin rounded, almost circular; apex deeply notched, pseudostyle acute, with few short setae. Style (Fig. 21) approximately straight; apex slightly tapered and curved dorsally.

Etymology

The new species name refers to the locality (Parque Estadual do Cristalino) where the type series was collected.

Material examined

Holotype

BRAZIL • ♂; “Brasil, MT [Mato Grosso], Novo Mundo, Pq. [Parque]\Est. [Estadual] do Cristalino, 09.4517°S, \55.8396°W, 240m, light trap, \21-25.vi.2017, RR Cavichioli \& AC Domahovski”; DZUP 215443.

Paratypes

BRAZIL • 5 ♂♂, 4 ♀♀; same collection data as for holotype; DZUP 215444 to 215452 • 1 ♂, 1 ♀; same collection data as for holotype; DZRJ • 1 ♀; “Brasil, MT, Novo Mundo, \Pq. Est. do Cristalino, \09.4517°S 55.8396°W, \240m, luminárias - alojamento AC Domahovski”; DZUP 215453.

Description

Male

MEASUREMENTS (mm). Holotype (♂) total length 4.7. Paratypes (♂) 4.6–4.8; (♀) 4.8–5.0.

BODY. Small and ovate leafhoppers, not depressed dorsoventrally.

HEAD (Figs 13–15). Dorsal view: very short, transocular width nine-tenths humeral width of pronotum; crown not developed, vertical, surface whit transverse striae; anterior and posterior margins parallel and broadly rounded; ocelli not visible dorsally; lateral view: crown-face transition broadly rounded with transverse striae; frons and clypeus slightly inflated; ventral view: face more than two times wider than high; ocelli small, on anterior margin, mesad of antennal pits and distant from eyes; frons with transverse striae, lateral margins strongly convergent ventrally; frontogenal suture surpassing antennal ledge, extending to anterior margin of crown; antennal ledge carinate and slightly oblique, not concealing antennal base; antenna length ca 1/3 width of head; gena broad, with small setae; ventrolateral margin broadly rounded, completely concealing proepisternum; maxillary plate produced ventrally as far as clypeus apex; lorum with few short setae, narrower than clypeus width, subgenal suture rounded, extended nearly to midlength of lateral margin of frons; clypeus slightly shorter than basal width, epistomal suture complete and rounded, lateral margins excavated medially, apex slightly broadened, rounded and carinated.

PRONOTUM (Figs 13–14). Dorsal view: anterior margin broadly rounded, posterior margin slightly excavated; surface without setae, with transverse striae, except on anterior third; lateral margins convergent anterad, carinate, slightly shorter than eye length; lateral view: convex and declivous anterad.

MESONOTUM AND SCUTELLUM (Fig. 13). Dorsal view: longer than pronotum length; surface with transverse striae, except lateral angles with texture shagreen; scutellum flat.

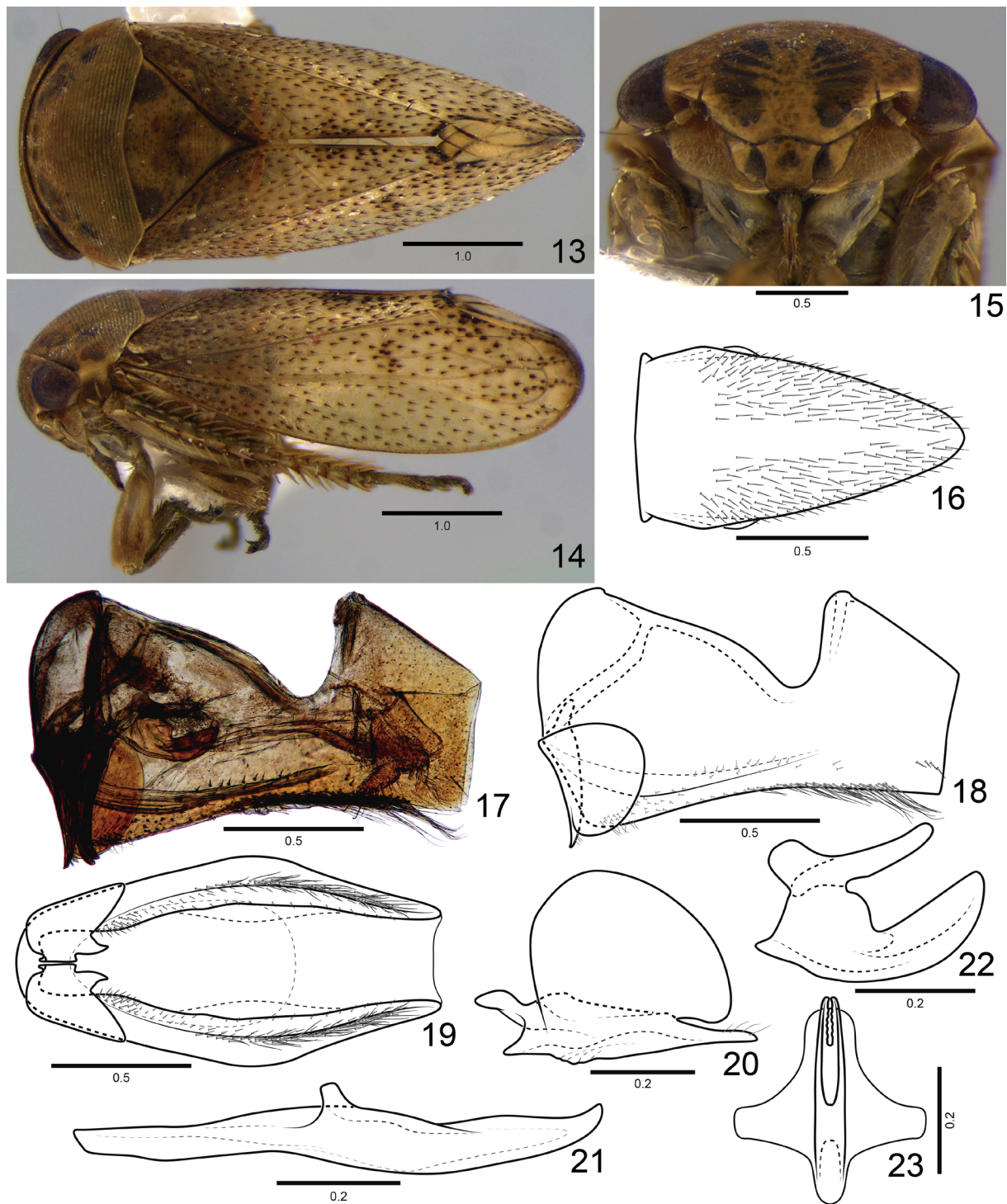
FOREWING (Figs 13–14). With many small erect setae, venation obscure; clavus truncate apically; vein separating appendix and first apical cell complete (not evanescent apically), appendix and first apical cell broad, more membranous than adjacent cells, glabrous; 3 closed anteapical cells and 4 apical cells (2nd, 3rd and 4th cells short; R1 vein absent).

HIND WING. Veins R4+5 and M1+2 fused apically.

LEGS. Profemur moderately elongated, 2.9 times longer than high; PD, AD and AM rows formed by undifferentiated setae, PD1 and AD1 setae short and AM1 absent; IC row formed by double row of fine setae, continuous with AV row; AV and PV rows formed by several fine setae. Protibia, in cross-section, almost circular, without defined longitudinal carina adjacent to PD row; AV row formed by short, thin setae in the basal half and slightly more robust setae distally; AD row consisting of only undifferentiated setae; PD row formed by with 3–4 long setae intercaled by undifferentiated setae; PV row with 6–7 short setae. Hind leg with femoral setal formula 2:2:1 or 2:2:1:1; PD2 seta reduced in size; metatibia PD, AD and AV rows with 14–19, 9–11 and 10–12 macrosetae respectively; AD row without intercalary setae between macrosetae; PV row with setae of apical half intercalating 1 longer and thicker seta and 3–4 shorter and thinner setae, ending with 3 thin setae; first tarsomere without enlarged dorsoapical seta; ventral surface with two longitudinal rows of simple (non-cucullate) thin setae; pecten with 4 platellae flanked by tapered lateral setae; second tarsomere pecten with 2 platellae flanked by tapered lateral setae.

COLORATION. Head and thorax (Figs 13–15) brownish-yellow. Face (Fig. 15) with muscle impressions of frons brown; lorum with ventral half brown. Pronotum (Fig. 13) with irregular brown markings near anterior margin. Mesonotum (Fig. 13) with lateral angles dark brown. Forewing (Figs 13–14) with brown setae and groups of black setae at midlength of anal margin, apex of clavus and apex of inner discal cell (variable in intensity between the specimens).

TERMINALIA. Sternite VIII (Fig. 16) convex, strongly produced posterad, two times longer than wide, longer than sternites VII and VI combined; ventral surface with many small setae, except basal portion and along median line; lateral margins tapered toward apex, with small rounded lobe at basal third; apex subacute. Valve (Figs 17–18) longer than wide, broadly fused laterally to pygofer; lateral margins convergent toward ventral margin, with strong integument thickening; ventral margin rounded. In lateral view, pygofer (Figs 17–18) without processes, higher near base; dorsal margin deeply notched after half its length; dorsoposterior margin fused to pygofer lobes, straight and oblique; ventral margin approximately straight, with short setae near base and long thin setae on apical half; lateral surface with longitudinal carina near ventral margin of basal $\frac{2}{3}$; apex very wide and truncated; without macrosetae, but with few short setae near apex. In ventral view, pygofer (Fig. 19) with ventral margin folded inward, from base to apex, with short setae on inner surface. Anal tube (Fig. 17) membranous, without processes. Subgenital plate (Figs 17–20) short, with well developed pseudostyle; inner margin nearly straight; external margin rounded, almost circular, overlapping pygofer laterally; apex deeply notched, pseudostyle acute, with few short setae. Connective amorphous. Style (Figs 17, 21) long, approximately straight, apodeme and apophysis long, subequal in length; apex slightly tapered and curved dorsally. Aedeagus (Figs 22–23), with preatrium not developed; dorsal apodeme developed, with lateral margins extended laterad and posterior margin extending to almost apex of shaft; shaft slightly curved dorsally;



Figs 13–23. *Gehundra cristalinensis* sp. nov., holotype, ♂ (DZUP 215443). **13.** Habitus, dorsal view. **14.** Habitus, lateral view. **15.** Head, ventral view. **16.** Sternite VIII, ventral view. **17.** Genital capsule, lateral view. **18.** Pygofer, valve and subgenital plate, lateral view. **19.** Pygofer, valve and subgenital plate, ventral view. **20.** Subgenital plate, ventral view. **21.** Style, lateral view. **22.** Aedeagus, lateral view. **23.** Aedeagus, ventral view. Scale bars in mm.

dorsal margin rounded near base and straight distally; ventral margin broadly rounded. In ventral view, aedeagus (Fig. 23) with shaft apex bifid; gonopore subapical.

Female

TERMINALIA. Sternite VII (Figs 24–25) ca two times wider than long; ventral surface with short setae; posterior margin deeply excavated, V-shaped. Internal sternite VIII membranous. Pygofer (Figs 24, 26)



Figs 24–31. *Gehundra cristalinensis* sp. nov., paratype, ♀ (DZUP 215451). **24.** Apical portion of abdomen, ventral view. **25.** Apical portion of abdomen, lateral view. **26.** Enlarged view of basal portion of pygofer. **27.** First valvifer and first valvula, lateral view. **28.** Apical portion of first valvula. **29.** Second valvula, lateral view. **30.** Apical portion of second valvula. **31.** Second valvifer and gonoplac, lateral view. Scale bars in mm.

with many thin setae; ventral margin broadly rounded with group of thick setae at base; apex obliquely truncated. Ovipositor slender, evenly curved dorsad, not surpassing pygofer apex. First valvifer (Fig. 27) trapezoid, approximately as long as wide; anterior margins of both valvifers connected by sclerotized membrane. First valvula (Fig. 27) with dorsal and ventral margins almost parallel, slightly convergent apically, ca 7 times longer than high at base; ventral interlocking device long, extending over basal $\frac{2}{3}$; dorsal sculptured area areolate starting before the midlength; apical portion (Fig. 28) with ventral sculpture present only near apex, continuous with the dorsal sculpture, apex moderately tapered and acute. Second valvifer (Fig. 31) ca three times higher than long. Second valvula (Fig. 29) ca 10 times longer than high; dorsal and ventral margins parallel; dorsal margin with three distinct subapical teeth widely spaced; apical portion (Fig. 30) of dorsal margin with two rounded subapical notches forming one rounded tooth between apex and first subapical tooth; ventral margin without denticles and with one subapical tooth. Gonoplac (Fig. 31) four times longer than high; dorsoapical margin long, half length of gonoplac; external surface without dentiform cuticular projections; ventral margin broadly rounded, with few spaced macrosetae near ventral margin; apex rounded.

Remarks

Gehundra cristalinensis sp. nov. is most similar to *G. avulsa* in having the male pygofer with ventral margin bearing long setae on apical half and the subgenital plate deeply notched apically. However, the new species can easily be separated by the subgenital plate (Fig. 20) with external margin rounded, almost circular (less expanded laterally and not circular in *G. avulsa*) and the style (Fig. 21) approximately straight, with apex slightly tapered (style with apophysis more curved, with apex foot-shaped in *G. avulsa*).

Gehundra sordida (Baker, 1900)

Figs 32–49

Macropsis sordidus Baker, 1900: 56.

Bythoscopus sordidus – Oman 1936: 354.

Stragania sordida – Linnavuori 1956: 18.

Iassus sordidus – Metcalf 1966: 90.

Gehundra sordida – Blocker 1979: 23, fig. 24.

Diagnosis

Pygofer (Figs 36–38) ventral margin excavated basally, with rounded lobe at basal third, and short, thick setae grouped in line near midlength. Subgenital plate (Figs 36–39) with external margin with rounded lobe on basal half; apex of pseudostyle subacute, with thin setae along external margin and group of thicker setae on apex. Style (Fig. 40) with apophysis straight, apex rounded, curved dorsally.

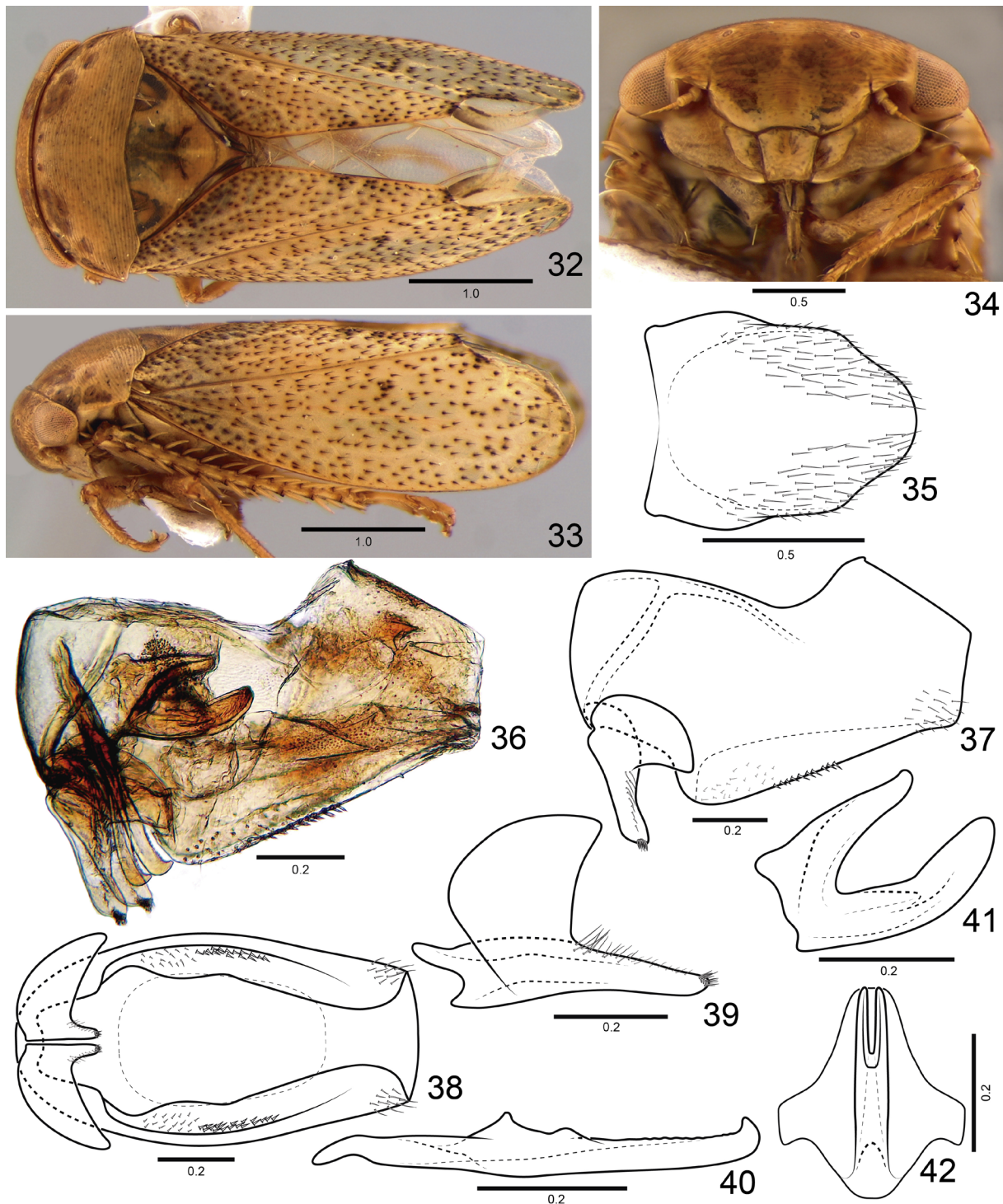
Material examined

BRAZIL • 1 ♂; “Brasil, MS [Mato Grosso do Sul], Miranda, \Cultura soja, 20°07'24,29”S \56°37'15,66”W, 122m, \02.II.2016, A. Specht, W. R. F. \de Camargo & H.V.B. Concone”; DZUP 215454 • 2 ♀♀; same collection data as for preceding; “03.II.2016”; DZUP 215455–215456 • 1 ♀; same collection data as for preceding; “Porteira, 20°06'01,22”S 56°37'06,35”W, 120m, 01.II.2016”; DZUP 215457 • 1 ♀; same collection data as for preceding; “Nativa-campo, 20°06'20,20”S 56°36'52,62”W, 121m, 14.XI.2015”; DZUP 215458.

Description (external characters as in the preceding description)

Male

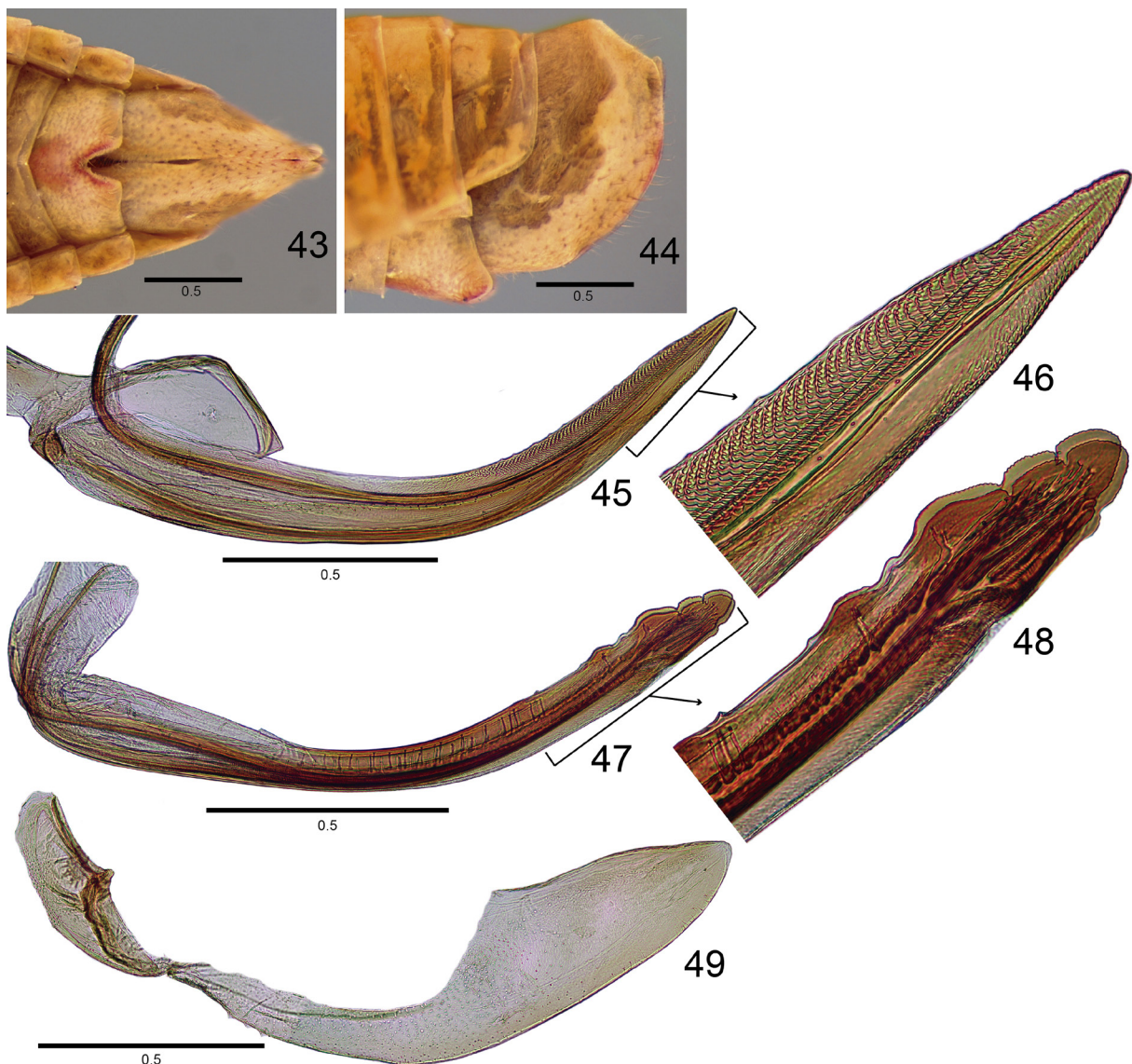
MEASUREMENTS (mm). Total length (♂), 4.5; (♀) 4.5–4.8.



Figs 32–42. *Gehundra sordida* (Baker, 1900), ♂ (DZUP 215454). **32.** Habitus, dorsal view. **33.** Habitus, lateral view. **34.** Head, ventral view. **35.** Sternite VIII, ventral view. **36.** Genital capsule, lateral view. **37.** Pygofer, valve and subgenital plate, lateral view. **38.** Pygofer, valve and subgenital plate, ventral view. **39.** Subgenital plate, ventral view. **40.** Style, lateral view. **41.** Aedeagus, lateral view. **42.** Aedeagus, ventral view. Scale bars in mm.

COLORATION. Head and thorax (Figs 32–34) brownish-yellow. Pronotum (Fig. 32) with irregular brown markings near anterior margin. Mesonotum (Fig. 32) with lateral angles dark brown. Forewing (Figs 32–33) with brown setae and groups of black setae at midlength of anal margin, apex of clavus and apex of inner discal cell (variable in intensity between the specimens).

TERMINALIA. Sternite VIII (Fig. 35) convex, strongly produced posterad, 1.5 times longer than wide, longer than sternites VII and VI combined; ventral surface with many small setae, except basal portion and along median line; lateral margins with small rounded lobe at basal third; apex abruptly tapered and rounded. Valve (Figs 36–37) longer than wide, broadly fused laterally to pygofer; lateral margins convergent toward ventral margin, with strong integument thickening; ventral margin rounded. In lateral view, pygofer (Figs 36–37) without processes, higher near basal third; dorsal margin notched after half



Figs 43–49. *Gehundra sordida* (Baker, 1900), ♀ (DZUP 215455). **43.** Apical portion of abdomen, ventral view. **44.** Apical portion of abdomen, lateral view. **45.** First valvifer and first valvula, lateral view. **46.** Apical portion of first valvula. **47.** Second valvula, lateral view. **48.** Apical portion of second valvula. **49.** Second valvifer and gonoplac, lateral view. Scale bars in mm.

its length; dorsoposterior margin fused to pygofer lobes, straight and oblique; ventral margin excavated basally, with rounded lobe at basal third, straight on posterior $\frac{2}{3}$, with short, thick setae grouped in line near midlength; lateral surface without macrosetae, but with few short setae near apex. In ventral view, pygofer (Fig. 38) with ventral margin folded inward, from base to apex, with short setae on inner surface. Anal tube membranous, without processes. Subgenital plate (Figs 36–39) short, with well developed pseudostyle; inner margin nearly straight; external margin with rounded lobe on basal half, overlapping pygofer laterally; apex of pseudostyle subacute, with thin setae along external margin and group of thicker setae on apex. Connective amorphous. Style (Figs 36, 40) long, approximately straight, apodeme and apophysis long, sub equal in length; apex rounded, curved dorsally. Aedeagus (Figs 41–42), with preatrium not developed; dorsal apodeme developed, lateral margins extended laterad and posterior margin extending to almost apex of shaft; shaft slightly curved dorsally, with height approximately constant from base to apex. In ventral view, aedeagus (Fig. 42) with shaft apex bifid; gonopore subapical.

Female

TERMINALIA. Sternite VII (Figs 43–44) ca two times wider than long; ventral surface with short setae; posterior margin with narrow and deep notch medially. Internal sternite VIII membranous. Pygofer (Figs 43–44) with many thin setae; ventral margin broadly rounded; apex obliquely truncated. Ovipositor slender, evenly curved dorsad, not surpassing pygofer apex. First valvifer (Fig. 45) triangular; anterior margins of both valvifers connected by sclerotized membrane. First valvula (Fig. 45) with dorsal and ventral margins, slightly convergent apically, ca 8 times longer than high at base; ventral interlocking device long, extending over basal $\frac{2}{3}$; dorsal sculpturing area areolate starting before the midlength; apical portion (Fig. 46) with ventral sculpture present only near apex, continuous with the dorsal sculpture, apex gradually tapered and acute. Second valvifer (Fig. 49) ca three times higher than long. Second valvula (Fig. 47) ca 10 times longer than high; dorsal and ventral margins parallel; dorsal margin with three distinct subapical teeth widely spaced; apical portion (Fig. 48) dorsal margin with two rounded notches forming one rounded tooth between apex and first subapical tooth; ventral margin without denticles and with one subapical tooth. Gonoplac (Fig. 49) four times longer than high; dorsoapical margin long with half length of gonoplac; external surface without dentiform cuticular projections; ventral margin broadly rounded, with few spaced macrosetae near ventral margin; apex rounded.

Remarks

Gehundra sordida is similar to *G. galbina* and *G. cristalinensis* sp. nov. in lacking long setae on ventral margin of pygofer, and is similar to *G. cristalinensis* sp. nov. in having the apex of style not foot-shaped. However, *G. sordida* can be easily separated by the subgenital plate with external margin with lobe limited to the basal half of pseudostyle (external margin with lobe occupying more than half length of pseudostyle in *G. avulsa* and *G. cristalinensis* sp. nov., and occupying entire length of pseudostyle in *G. tricola* and *G. galbina*).

Key to males of *Gehundra* (*G. pallida* only known from the female)

1. Style with apex expanded, foot-shaped (Blocker 1976: 520, fig. 10) 2
 - Style with apex tapered, not foot-shaped (Fig. 21) 4
2. Subgenital plate with lobe of the external margin occupying more than half length of pseudostyle (Blocker 1976: 520, fig. 12) *G. avulsa* Blocker, 1976 (Peru)
 - Subgenital plate with lobe of the external margin occupying entire length of pseudostyle (Blocker 1976: 520, fig. 13) 3
3. Pygofer with long setae on ventral margin (Blocker 1976: 520, fig. 7)
 - *G. tricola* Blocker, 1976 (Peru)
 - Pygofer without long setae on ventral margin *G. galbina* Blocker, 1976 (Peru)

4. Pygofer with long setae on ventral margin (Fig. 18). Subgenital plate with lobe of the external margin occupying more than half length of pseudostyle (Fig. 20) *G. cristalinensis* sp. nov. (Brazil)
- Pygofer without long setae on ventral margin (Fig. 37). Subgenital plate with lobe of the external margin limited to the basal half of pseudostyle (Fig. 39) *G. sordida* (Baker, 1900) (Brazil)

Discussion

The genus *Comanopa* can be recognized by the forewing with vein separating appendix and first apical cell incomplete (evanescent apically); the pygofer with process (pygofer hooks) arising near apex, extending anterad, similar to *Penestrangia* Beamer & Lawson, 1945; the subgenital plates simple, slightly reduced in size, similar to *Momoria* Blocker, 1979; the style reduced in length; and the connective like a narrow semicircular band (Blocker 1979). In the new species of *Comanopa* proposed herein, the process of pygofer differs from the process present in species of *Penestrangia*, because it is entirely fused to the lateral lobe of pygofer, resembling more an integument thickening than a process, whereas in species of *Penestrangia* this process is separated from the lateral lobe by most of its length. However, the remaining species of *Comanopa* need to be studied to determine if this characteristic found in *C. manancienis* sp. nov. is unique for this species or is shared with other species of the genus.

The genus *Gehundra* can mainly be recognized by the forewing with vein separating appendix and first apical cell complete; the male sternite VIII very long, reaching the apex of pygofer, in repose; the subgenital plates with external margin lobed, overlapping the lateral portion of pygofer and with well developed pseudostyles; and the connective amorphous (Blocker 1976). Only two species of *Gehundra* were previously known from Brazil, *G. pallida* and *G. sordida*, both described based on a single female specimen. According to the descriptions and illustrations of Blocker (1979), *G. sordida* has the posterior margin of sternite VII with a narrow and deep notch medially (Fig. 43; Blocker 1979: 22, fig. 24) and *G. pallida* has the posterior margin evenly excavated, almost rounded (Blocker 1979: 22, fig. 23). *Gehundra cristalinensis* sp. nov. can be differentiated from *G. pallida* and *G. sordida* in having the posterior margin of the sternite VII with a broad and acute notch medially (Fig. 24).

The diversity and distribution of leafhoppers of the tribe Hyalojassini remain poorly known. The majority of species described from the Neotropical region don't have the male and female associated and are known based on a few specimens, commonly only by the holotype. Almost all studies which described neotropical species currently placed in this tribe are anterior to the 1980s and considering only a few generic revisions are available and many species remain undescribed in Brazilian collections, this is a wide field to be explored.

Acknowledgments

This work was supported by a CNPq stipend (process 140815/2017-1). Many thanks to the anonymous reviewers who kindly made improvements to a preliminary version of this manuscript, the editorial team of the EJT, Dr Rodney R. Cavichioli (DZUP, curator of Hemiptera) for providing the infrastructure needed to develop this study, Dr Alexandre Specht (Empresa Brasileira de Pesquisa Agropecuária) and the collaborators Willian Rogers Ferreira de Camargo and Henrique Villas Boas Concione by the specimens of *G. sordida* studied herein.

References

- Baker C.F. 1900. On some American species of *Macropsis* (Jassidae). *Psyche* 9: 55–59.
- Blocker H.D. 1976. Three new genera of Neotropical Iassinae (Homoptera: Cicadellidae). *Annals of the Entomological Society of America* 69 (3): 519–522. <https://doi.org/10.1093/aesa/69.3.519>

- Blocker H.D. 1979. The Iassinae (Homoptera: Cicadellidae) of the western Hemisphere. *Journal of the Kansas Entomological Society* 52 (1): 1–70.
- Blocker H.D. 1982. New species of Iassinae from the Neotropics (Homoptera: Cicadellidae). *Journal of the Kansas Entomological Society* 55 (4): 639–650.
- Cavichioli R.R. & Takiya D.M. 2012. Description of a new species of *Wolfniana* and new records of *Rotigonalia* (Hemiptera: Cicadellidae: Cicadellinae) from the state of Amazonas, Brazil. *Zoologia* 29 (1): 85–88. <https://doi.org/10.1590/S1984-46702012000100011>
- Dai W. & Dietrich C.H. 2015. A new genus of Iassinae (Hemiptera: Cicadellidae) from Peru and a new species of *Daveyoungana* Blocker & Webb. *Zootaxa* 3946 (2): 285–295. <https://doi.org/10.11646/zootaxa.3946.2.10>
- Dai W., Dietrich C.H. & Zhang Y. 2015. A review of the leafhopper tribe Hyalojassini (Hemiptera: Cicadellidae: Iassinae) with description of new taxa. *Zootaxa* 3911 (1): 1–42. <https://doi.org/10.11646/zootaxa.3911.1.1>
- Defea B.S. & Paradell S.L. 2019. New South American genus of Iassinae (Hemiptera: Cicadellidae) and additional morphological characters for two Neotropical species of Neobalinae and Nioniinae. *Austral Entomology* 58 (4): 729–738. <https://doi.org/10.1111/aen.12423>
- Dietrich C.H. 2005. Keys to the families of Cicadomorpha and subfamilies and tribes of Cicadellidae (Hemiptera: Auchenorrhyncha). *Florida Entomologist* 88: 502–517. [https://doi.org/10.1653/0015-4040\(2005\)88\[502:KTTFOC\]2.0.CO;2](https://doi.org/10.1653/0015-4040(2005)88[502:KTTFOC]2.0.CO;2)
- Dietrich C.H., de Magalhães R.B. & Takiya D.M. 2020. Revision of the endemic Malagasy leafhopper tribe Platyjassini (Hemiptera: Cicadellidae: Iassinae). *European Journal of Taxonomy* 695: 1–89. <https://doi.org/10.5852/ejt.2020.695>
- Domahovski A.C. 2019. New genera and species of Selenomorphini (Hemiptera: Cicadellidae: Iassinae), including redescription of *Scaroidana* Osborn, *Pachyopsis* Uhler and updated key to genera and species. *Zootaxa* 4711 (3): 517–544. <https://doi.org/10.11646/zootaxa.4711.3.5>
- Domahovski A.C. 2020. New species of *Bertawolia* Blocker and *Momoria* Blocker (Cicadellidae: Iassinae: Hyalojassini) from Brazil, including notes about host plants. *Zootaxa* 4808 (3): 475–490. <https://doi.org/10.11646/zootaxa.4808.3.4>
- Domahovski A.C. & Cavichioli R.R. 2019a. *Acusana* DeLong (Hemiptera: Cicadellidae: Gyponini), a genus not previously recorded in Brazil: description of four new species for the Brazilian fauna. *Zootaxa* 4571 (4): 531–543. <https://doi.org/10.11646/zootaxa.4571.4.5>
- Domahovski A.C. & Cavichioli R.R. 2019b. Three new species of *Daveyoungana* Blocker & Webb (Hemiptera: Cicadellidae: Iassinae: Hyalojassini) from Brazil. *Zootaxa* 4571 (4): 477–488. <https://doi.org/10.11646/zootaxa.4571.4.2>
- Domahovski A.C. & Cavichioli R.R. 2019c. *Guaricicana*, a new genus of Hyalojassini (Hemiptera: Cicadellidae: Iassinae) from the Brazilian Atlantic Forest. *European Journal of Taxonomy* 547: 1–12. <https://doi.org/10.5852/ejt.2019.547>
- Domahovski A.C. & Cavichioli R.R. 2020. Three new species of *Polana* (*Varpulana*) (Hemiptera: Cicadellidae: Gyponini) from Brazil, with updated key to males and taxonomic notes on the female genitalia. *Zootaxa* 4767 (4): 501–517. <https://doi.org/10.11646/zootaxa.4767.4.1>
- Domahovski A.C., Gonçalves C.C., Takiya D.M. & Cavichioli R.R. 2020. Description of two new species of *Regalana* and a new genus of Gyponini (Hemiptera: Cicadellidae: Iassinae). *Zootaxa* 4731 (1): 89–102. <https://doi.org/10.11646/zootaxa.4731.1.6>

- Freytag P.H. 2018. Three new species of *Bythonia* (Hemiptera: Cicadellidae: Iassinae) from South America. *Entomological News* 128 (1): 61–64. <https://doi.org/10.3157/021.128.0108>
- Freytag P.H. & Sharkey M. 2002. A preliminary list of the leafhoppers (Homoptera: Cicadellidae) of Colombia. *Biota Colombiana* 3: 235–283.
- Gaiani M.A. 2017. Review of the genus *Bythonia* Oman 1936 with description of a new species and new record from Venezuela (Hemiptera, Cicadellidae, Iassinae). *Zootaxa* 4273 (3): 447–450. <https://doi.org/10.11646/zootaxa.4273.3.11>
- Gonçalves C.C., Dietrich H.D. & Takiya D.M. 2020. A new genus of Hoplojassini from French Guiana (Hemiptera: Cicadellidae: Iassinae) and identification key for species of tribe. *Zootaxa* 4742 (2): 351–358. <https://doi.org/10.11646/zootaxa.4742.2.8>
- Hamilton K.G.A. 1981. Morphology and evolution of the Rhynchotan head (Insecta: Hemiptera, Homoptera). *The Canadian Entomologist* 113: 953–974. <https://doi.org/10.4039/Ent113953-11>
- Kramer J.P. 1963. A key to the New World genera of Iassinae with reviews of *Scaroidana* and *Pachyopsis* (Homoptera: Cicadellidae). *Bulletin of the Brooklyn Entomological Society* 58 (2/3): 37–50. Available from <https://www.biodiversitylibrary.org/part/177194> [accessed 31 Mar. 2021].
- Krishnankutty S.M., Dietrich C.H., Dai W. & Siddappaji M.H. 2016. Phylogeny and historical biogeography of leafhopper subfamily Iassinae (Hemiptera: Cicadellidae) with a revised tribal classification based on morphological and molecular data. *Systematic Entomology* 41 (3): 580–595. <https://doi.org/10.1111/syen.12175>
- Linnavuori R.E. 1956. Neotropical Homoptera of the Hungarian National Museum and some other European museums. *Annales Entomologici Fennici* 22: 5–35.
- Mejdalani G. 1998. Morfologia externa dos Cicadellinae (Homoptera, Cicadellidae): comparação entre *Versigonalia ruficauda* (Walker) (Cicadellini) e *Tretogonia cribrata* Melichar (Proconiini), com notas sobre outras espécies e análise da terminologia. *Revista Brasileira de Zoologia* 15: 451–544. <https://doi.org/10.1590/S0101-81751998000200015>
- Metcalf Z.P. 1966. *General Catalogue of the Homoptera. Fascicle VI. Cicadelloidea. Part 15. Iassidae*. United States Department of Agriculture, Agricultural Research Service, Washington DC.
- Oman P.W. 1936. A generic revision of American Bythoscopinae and South American Iassinae. *The Kansas University science bulletin* 24: 343–420. Available from <https://www.biodiversitylibrary.org/part/33502> [accessed 31 Mar. 2021].
- Oman P.W. 1949. The Nearctic leafhoppers (Homoptera: Cicadellidae). A generic classification and check list. *Memoirs of the Entomological Society of Washington* 3: 1–253.
- Rakitov R.A. 1997. On differentiation of cicadellid leg chaetotaxy (Homoptera: Auchenorrhyncha: Membracoidea). *Russian Entomological Journal* 6: 7–27.
- Wang X.Y., Wu Y.F. & Dai R.H. 2018. Three new species of the leafhopper subfamily Iassinae (Hemiptera: Cicadellidae) from China. *Zootaxa* 4442 (3): 378–388. <https://doi.org/10.11646/zootaxa.4442.3.2>
- Young D.A. 1968. Taxonomic study of the Cicadellinae (Homoptera: Cicadellidae). Part 1. Proconiini. *Bulletin of the United States National Museum* 261: 1–287. <https://doi.org/10.5962/bhl.part.20869>
- Young D.A. 1977. Taxonomic study of the Cicadellinae (Homoptera: Cicadellidae). Part 2. New World Cicadellini and the genus *Cicadella*. *Technical Bulletin of North Carolina Agricultural Experiment Station* 239: 1–1135.

Manuscript received: 18 September 2020

Manuscript accepted: 9 February 2021

Published on: 22 April 2021

Topic editor: Nesrine Akkari

Section editor: Christopher H. Dietrich

Desk editor: Pepe Fernández

Printed versions of all papers are also deposited in the libraries of the institutes that are members of the *EJT* consortium: Muséum national d'histoire naturelle, Paris, France; Meise Botanic Garden, Belgium; Royal Museum for Central Africa, Tervuren, Belgium; Royal Belgian Institute of Natural Sciences, Brussels, Belgium; Natural History Museum of Denmark, Copenhagen, Denmark; Naturalis Biodiversity Center, Leiden, the Netherlands; Museo Nacional de Ciencias Naturales-CSIC, Madrid, Spain; Real Jardín Botánico de Madrid CSIC, Spain; Zoological Research Museum Alexander Koenig, Bonn, Germany; National Museum, Prague, Czech Republic.