

College and University Library Statistics

THE STATISTICS this year present a greater range of types of schools and a more complete regional representation than will be found in previous listings. It will be noted that more institutions have reported more data than has been common in other years. It seems quite probable that this increased participation in reporting is a direct result of the effort and stimulation given by the Executive Secretary of the A.C.R.L., N. Orwin Rush.

All who use these figures should appreciate the arduous and exacting efforts of the librarians who tabulated and summarized this information. Donald Thompson, assistant director, University of Alabama Libraries, prepared the materials for Group I, and Dan Graves, librarian, Willamette University, did the work on Group II. The data on Group III were prepared by Catherine Zealberg, Library Science Department, Western Illinois State Teachers College.

In view of the great accumulation of information in these tables, it was hoped that some comparisons might be made with the results for earlier years. However, the variation in schools represented from year to year is so great that it is difficult to arrive at accurate conclusions. Since the present analyst had previously prepared a summary of the 1937-38 college and university figures, he was interested in comparing the returns for that year with the present data. In order to give some validity to the comparisons, only those schools were considered which supplied information in both 1938 and 1947.

From a study of the above schools, it appears that although the total educational budgets in all types of colleges have in-

creased, the percentage allotted to the library is decreasing. The average library appropriation has never been large enough.

A further selective study was made of the salaries of the chief librarians for those institutions represented in the summaries for 1938, 1946, and 1947. The table below indicates the results:

Salaries for Chief Librarians

| | Increase in Median Figure | |
|-----------|---------------------------|-----------|
| | 1938-1947 | 1946-1947 |
| Class I | 33% | 11% |
| Class II | 33% | 15% |
| Class III | 59% | 17% |

From a more general study of salaries, it appears that even greater increases have been given to department heads and professional assistants. It would appear that the gap between the chief librarian and his first assistant is much smaller than it was ten years ago.

Since G. Flint Purdy and Lawrence S. Thompson have recently presented excellent critical articles on library statistics, it hardly seems profitable to point out specific instances of the inadequacies of the present data. Prospective users of these figures, however, should be warned that it would be unprofitable and unreliable to compare (from year to year) the medians or the extremes in any of the groups. Accurate results can only be obtained by selecting the schools that appear uniformly in each of the years to be considered. Then new extremes and means can be computed and the results compared.

Many libraries have entered the tables this year. A continuing representative group of these libraries will furnish us with factual material for a picture of the postwar library era.—*Foster E. Mohrhardt.*

College and University Library General and Salary Statistics (Group I)

| Library | Student Enrollment | | | | | Circulation | | | | | Library Operating Expenses Last Fiscal Year | | | | | | | Total College or University Expenditures Last Fiscal Year ²⁶ |
|-------------------------------|--------------------|-----------------------|--------------------|-----------------------------|---------------------------------|--------------------------------|---------------------------------|--|-----------------------------------|-----------------------|---|------------------------|----------------------|-----------------------|--------------------------------|----------------------|--------------------------|---|
| | Fiscal Year Ending | Regular Undergraduate | Graduate | Summer Session ² | Faculty Members Regular Session | Faculty Members Summer Session | Volumes Book Stock ⁴ | Volumes Lent for Home Use ⁵ | Reserved Books Loans ⁶ | Staff Salaries | Student Service | Books | Periodicals | Binding and Rebinding | Books, Periodicals and Binding | Other ¹² | Total | |
| Alabama | 30Se47 | 8408 | 218 | 4998 ⁸ | 425 | 310 | 274,426 ²⁹ | 124,101 | 116,310 | \$ 88,528 | \$ 17,858 | \$ 73,905 ⁸ | 12 | \$ 12,399 | \$ 86,304 | \$ 11,439 | \$ 204,129 ²⁸ | \$ 3,188,193 |
| Arizona | 30Je47 | 4087 | 155 | 1544 | 345 | 85 | 195,909 | 37,098 | 219,010 | 27,186 | 9266 | 13,035 ⁸ | 12 | 4767 | 17,800 | 2749 | 59,001 | 2,363,639 |
| Brown | 30Je47 | 3432 | 430 | 760 | 328 | 7 | 689,517 | 78,468 | 19,239 | 109,819 | 7668 | 48,736 | \$ 18,288 | 8344 | 75,368 | 14,772 | 207,627 | 2,652,946 |
| California (Berkeley) | 30Je47 | 17,964 ¹ | 3945 ⁵ | 14,894 ⁸ | 3446 | 581 | 1,422,494 | 341,227 ¹⁰ | 380,777 ¹¹ | 336,307 | 174,906 | 124,943 | 49,630 | 36,116 | 210,789 | 39,244 | 761,146 | |
| California (Los Angeles) | 30Je47 | 14,387 | 1764 | 11,000 ⁸ | 550 | 273 | 536,974 | 130,607 | 299,115 | 171,810 | 36,473 | 90,209 | 15,500 | 32,027 | 137,736 | 17,390 | 363,409 | |
| Cincinnati | 30Je47 | 7633 | 281 | 1933 | 819 ¹⁰ | 115 ¹¹ | 606,452 | 157,831 | 123,780 | 82,746 | 10,900 | 47,157 ⁸ | 12 | 6635 | 53,792 | 2516 | 149,954 | 4,551,702 |
| Colorado ¹³ | 30Je47 | 7077 | 481 | 8560 ⁸ | 492 | 114 | 655,593 | 98,632 | 400,477 | 66,810 | 28,115 | 32,076 | 11,355 | 3387 | 56,818 | 5101 | 146,844 | 2,973,686 |
| Colorado A. & M. | 30Je47 | 3457 | 61 | 1109 | 400 | 74 ¹¹ | 121,963 | 34,576 | 27,048 | 25,400 | 5846 | 4942 | 3297 | 1727 | 9666 | 3555 | 44,747 | 2,508,204 |
| Dartmouth | 30Je47 | 2822 | 0 | 450 | 322 | 7 | 639,899 | 86,320 | 228,94 ¹³ | 115,554 | 9381 | 47,707 | 11,064 | 12 | 73,383 | 8424 | 3,000,000 | |
| Denver | 31Ag47 | 6477 | 663 | 11,346 ⁸ | 445 | 344 | 200,276 | 87,006 | 69,425 | 68,575 | 13,847 | 50,975 ⁸ | 12 | | 50,975 ⁸ | 21,670 | 155,067 | 2,703,761 |
| Duke | 30Je47 | 3499 | 1383 | 1808 | 580 | 76 | 898,444 | 169,446 | 269,763 | 153,665 | 21,774 | 144,465 ¹⁸ | 12 | 144,465 | 12,299 | 332,203 | 4,518,859 | |
| Georgia | 30Je47 | 6041 | 200 | 4034 ⁸ | 365 | 205 | 212,840 | 28,709 | 89,833 | 59,006 | 10,724 | 30,753 | 10,276 | 5604 | 46,633 | 11,271 | 129,534 | 1,992,642 |
| Harvard | 30Je47 | 6054 | 8544 | | | | 4,968,319 | 210,323 | 325,953 ¹⁸ | 382,237 | 15,931 | 176,837 ¹³ | 12 | 13,100 | 188,937 | 107,569 | 684,674 | 25,226,533 |
| Howard (Washington, D.C.) | 30Je47 | 4202 | 521 | 1643 | 468 | 117 | 186,066 | 156,277 | 53,312 | 6315 | 64,690 | 46,690 | 12 | 47,339 | 3254 | 110,220 | 2,430,407 | |
| Indiana | 30Je47 | 11,038 | 2072 ¹² | 4354 ²⁰ | 895 | 205 | 828,048 | 137,077 | 496,487 | 132,000 | 2400 | 105,000 | 31,500 | 21,750 | 158,250 | 34,000 | 326,650 | 5,088,212 |
| Iowa | 30Je47 | 8441 | 1331 | 6079 | 1066 ²¹ | 368 ²² | 687,289 | 187,210 | 111,700 | 43,186 | 53,215 | 20,434 | 14,818 | 88,467 | 12,675 | 256,029 | 7,069,217 | |
| Iowa State | 30Je47 | 10,113 | 1111 | 4093 | 822 | 316 | 376,946 | 68,087 | 87,853 ¹³ | 84,649 | 32,226 | 22,501 | 14,786 | 69,513 | 15,064 | 178,649 | 5,474,724 | |
| Joint University Libraries | 30Ap47 | 3732 | 1276 ²³ | 3335 ²⁴ | 458 | 156 | 489,088 | 222,056 | 187,265 | 73,670 | 28,222 | 58,794 ²⁵ | 12 | 8977 | 67,621 | 7936 | 177,450 | 4,406,368 |
| Kansas | 30Je47 | 8513 | 491 | 2947 | 741 | 99 | 382,117 | 87,198 | 219,702 | 73,736 | 28,454 | 30,774 | 9957 | 7413 | 44,714 | 9190 | 138,094 | |
| Louisiana State ²⁶ | 30Je47 | 8731 | 1037 | 1677 | 952 | 287 | 321,108 ²⁷ | 58,701 | 12,239 ¹³ | 130,081 | 17,465 | 29,778 | 19,118 | 13,009 | 61,905 | 9683 | 219,134 | 3,431,657 ²⁰ |
| Michigan | 30Je47 | 16,052 ²⁸ | 3124 | 9568 ²⁹ | 435 | 486 | 1,309,720 | 209,322 | 1,054,868 | 398,012 | 38,168 | 162,527 ¹⁸ | 12 | 162,527 | 15,600 | 614,307 | 20,154,620 | |
| Minnesota | 30Je47 | 24,479 | 2624 | 16,993 | 2733 | 1598 | 1,474,580 | 270,357 | 708,722 | 237,037 ²⁷ | | 114,409 | 27,636 | 37,532 | 179,557 | 133,216 | 549,810 | 17,100,531 |
| Missouri | 30Je47 | 9960 | 625 | 4560 | 503 | 343 | 547,505 | 128,339 | 222,780 | 71,780 | 37,536 | 61,609 | 30,812 | 9169 | 61,590 | 9092 | 199,998 | 6,604,188 |
| Mount Holyoke | 30Je47 | 1133 | 58 | | | | 207,407 | 147,945 ²⁸ | 28,475 ²⁰ | 27,515 | 1520 | 10,404 | 4059 | 1675 | 16,138 | 2442 | 47,615 | 768,275 |
| New Hampshire | 30Je47 | 3725 | 143 | 2433 ³ | 323 | 126 ³² | 144,605 | 52,026 | 6913 ¹³ | 31,162 | 6328 | 8767 | 2864 | 2924 | 14,555 | 5792 | 57,337 | 3,880,100 |
| New York | 30Je47 | 18,598 | 9127 | 16,84 | 3032 | 756 | 748,119 | 224,473 | 517,081 | 293,593 | | 90,055 | 7 | 12,180 | 102,235 | 39,383 | 437,521 | 16,578,128 |
| North Carolina | 30Je47 | 6126 ³ | 767 | 3025 ³ | 484 | 291 | 494,467 | 230,434 | 42,357 | 91,012 | 27,912 | 39,193 | 12,670 | 5627 | 57,940 | 19,648 | 196,062 | 3,430,104 |
| North Dakota | 30Je47 | 2456 | 76 | 978 | 145 | 73 | 131,445 | 23,757 | 21,702 | 9846 | 2780 | 5637 | | 1219 | 6856 | 8742 | 28,224 | 328,107 |
| Northwestern | 31Ag47 | 27,120 ³⁰ | 1530 | 9464 | 1983 | 350 | 851,771 | 148,579 | 125,737 | 180,479 | 58,732 | 180,540 ¹⁸ | 12 | 180,540 | 10,959 | 439,710 | 8,012,759 | |
| Oberlin | 30Je47 | 2083 ³¹ | 266 ³² | | | | 464,450 | 107,335 | 31,973 ¹³ | 69,994 | 7422 | 16,157 | 6887 | 5600 | 28,644 | 4172 | 110,232 | 1,883,095 |
| Oklahoma | 30Je47 | 8894 | 952 | 5207 | 484 | 260 | 287,165 | 82,491 | 87,905 | 41,330 | 20,000 | 63,000 ⁸ | 12 | 63,000 ⁸ | 6000 | 130,330 | 2,096,530 | |
| Oregon | 30Je47 | 5661 | 322 ³⁷ | 2972 ³⁷ | 484 | 267 | 484,267 | 272,646 | 259,749 | 59,751 ³⁸ | 36,447 ³⁹ | 5162 | 6036 | 39,405 | 8505 | 144,198 | | |
| Oregon State | 30Je47 | 7428 | 383 | 1679 | 611 | 150 | 221,448 | 66,406 | 86,594 | 83,313 | 10,945 | 13,773 | 5775 | 5430 | 24,078 | 5422 | 124,658 | 4,642,442 |
| Pennsylvania | 30Je47 | 8855 | 3085 | 3674 | 1679 | 7 | 1,132,465 | 167,570 | 246,081 | 203,812 | 22,883 | 60,334 | 16,557 | 18,064 | 94,955 | 12,935 | 334,585 | 10,860,814 |
| Pennsylvania State | 30Je47 | 6531 | 695 | 4723 ³ | 2004 | 328 | 280,237 | 90,541 | 162,487 | 92,840 ³ | 31,086 ³ | 38,023 ³⁵ | 14,688 ³⁵ | 5800 ³ | 58,510 ³⁵ | 11,375 ³⁵ | 193,811 ³⁵ | 13,563,344 |
| Pittsburgh | 30Je47 | 11,261 | 4807 ¹¹ | | | | 1024 | 124,605 | 81,055 | 74,762 | 10,000 | 89,800 ¹² | 12 | 89,800 ¹² | 11,901 | 186,543 | 5,534,116 | |
| Princeton | 30Je47 | 3377 | 430 | 1772 | 672 ⁴⁰ | 110 | 1,086,280 | 112,665 | 177,950 | 154,509 | 7228 | 60,385 | 23,679 | 25,035 | 109,099 | 17,659 | 288,495 | 3,294,249 |
| Rochester | 30Je47 | 3061 | 424 | 1772 | 267 ⁴¹ | 110 | 464,485 | 103,139 | 156,481 | 95,902 | 12,255 | 55,113 ⁸ | 12 | 10,652 | 65,765 | 12,624 | 186,546 | |
| Smith | 30Je47 | 2134 | 142 | 1195 ⁴² | 151 | 62 | 335,429 | 50,722 | 20,885 ¹³ | 57,903 ³ | | 23,350 | | 3484 | 26,834 | 13,593 | 98,420 | |
| South Dakota State | 30Je47 | 1857 | 31 | 1195 ⁴² | 151 | 62 | 335,429 | 50,722 | 20,885 ¹³ | 57,903 ³ | | 23,350 | | 3484 | 26,834 | 13,593 | 98,420 | |
| Southern Methodist | 30Je47 | 7198 | 311 | 3261 | 275 | 92 | 230,149 | 107,237 | 158,774 | 42,635 | 15,111 | 42,419 | 11,750 | 3243 | 57,412 | 3533 | 118,601 | 1,917,688 |
| Syracuse | 30Je47 | | | | | | 396,419 | 125,346 | 192,900 | 85,432 | 20,179 | 42,008 | 7797 | 8605 | 58,410 | 5154 | 169,175 | |
| Temple | 30Je47 | 5407 | 1023 | 3164 | 294 | 205 | 276,439 | 63,615 ²⁹ | 102,300 ²⁹ | 77,820 ²⁹ | 884 ²⁹ | 28,355 ²⁹ | 9925 ²⁹ | 3104 | 41,384 | 10,807 | 138,852 | 4,594,952 |
| Texas | 31Ag47 | 16,006 | 1254 | 10,845 | 661 | 28 | 832,786 | 173,733 | 828,133 | 131,218 | 62,928 | 55,731 | 27,799 | 15,639 | 99,169 | 9,862 | 313,177 | 6,947,569 |
| Vassar | 30Je47 | 1340 | 11 | 226 | 28 | 28 | 258,860 | 40,232 | 17,542 ¹³ | 65,812 | 3545 | 17,487 ⁸ | 12 | 4354 | 21,841 | 7050 | 98,248 | 1,592,200 |
| Virginia State | 30Je47 | 1234 | 63 | 651 | 166 | 84 | 37,453 | 48,548 | 46,020 | 17,922 | 4257 | 4716 ⁸ | 12 | 909 | 5625 | 707 | 28,511 | |
| Washington (St. Louis) | 30Je47 | 6239 | 757 | 4722 | 1027 | 204 | 547,742 | 95,077 | 26,404 | 76,570 | 5913 ²³ | 54,009 | 19,083 | 6367 | 79,459 | 44,858 | 205,109 | 6,496,914 |
| Washington (Seattle) | 31Mr47 | 14,116 | 1478 | 7155 | 1080 | 204 | 613,708 | 169,931 | 205,631 | 96,738 | 88,407 | 76,407 | 15,207 | 17,636 | 108,890 | 15,399 | 309,434 | 7,095,464 |
| Wayne | 30Je47 | 10,285 | 1721 | 6679 | 494 | | 296,338 | 96,416 | 120,431 | 88,621 | 21,158 | 71,259 | 9454 | 9927 | 90,640 | 13,834 | 214,253 | 4,648,036 |
| Wellesley | 30Je47 | 1643 | 42 | 46 ⁴⁴ | 1477 | 84 | 248,466 | 38,353 | 34,548 ¹⁵ | 62,200 | 2070 | 16,904 | 5898 | 4430 | 27,322 | 6138 | 97,730 | 2,593,454 |
| Yale | 31My47 | 5402 | 3123 | 963 | 1077 | 81 | 3,642,730 | 195,323 ²⁹ | 100,424 ²⁹ | 408,155 ⁴⁴ | | 517,365 ⁴⁴ | | 31,302 | 548,607 | 99,679 | 1,056,051 | 11,030,564 |
| High | | 27,120 ³⁰ | 9127 | 16,993 | 3446 | 1598 | 4,968,319 | 341,227 ¹⁰ | 1,054,868 | 408,155 ⁴⁴ | 174,906 | 124,943 | 49,630 | 37,532 | 548,607 | 133,216 | 1,056,051 | 25,226,533 |
| Median | | 6368 ³⁷ | 644 ³⁷ | 3504 ³⁷ | 494 | 204 | 464,450 | 107,327 | 141,109 ³⁷ | 83,313 | 13,847 | 40,401 ³ | | | | | | |

College and University Library General Statistics (Group I)

| Library | Library Income Last Fiscal Year | | | | Number of Employees in Full-Time Equivalent ²⁰ | | | | | Salaries ¹⁷ | | | Professional Assistants ¹⁸ | | | | | |
|--|---------------------------------|------------------------------|-------------------|-----------------------|---|-----------------|------------------|----------------------------------|--------------------|------------------------|--------------------|--|---------------------------------------|--------------------------|--------------------|-----------------|--------|--------------------|
| | University Budget | Endowment Funds ¹ | Gifts | Other | Total | Professional | Sub-professional | Administrative Office Assistants | Clerical and Other | Total | Chief Librarian | Associate or Assistant Chief Librarian | Department No. | Heads ¹⁴ Min. | Max. | No. | Min. | Max. |
| Alabama | \$200,950 | \$ 1302 | \$ 97 | \$ 1780 | \$ 204,129 ² | 34 | | 1 | 4 | 39 | 11 | \$4650 | 4 | \$3400 | \$3550 | 14 | \$1900 | \$3100 |
| Arizona | 57,075 | | | 12,020 ³ | 69,095 | 11 ¹ | 1 | | 1 | 13 ¹ | | | 3 | 2600 | 2900 | 6 ² | 1500 | 2700 |
| Brown | 165,964 | 14,955 | 431 | 52,073 ⁴ | 233,423 | 26 ³ | 23 | 1 | 28 | 78 ³ | 6250 | 5000 | 3 ⁴ | 2700 | 3800 | 18 ¹ | 2200 | 5000 |
| California (Berkeley) | 762,893 | 11,206 | 2835 | 257,537 ⁵ | 1,034,471 | 93 | 60 ¹ | 1 | 36 | 190 ³ | 9600 | | 18 | 3120 | 6840 ² | 59 ⁴ | 2640 | 4740 |
| California (Los Angeles) ²⁰ | 363,409 | | 1559 | 8610 ² | 373,578 | 42 | 14 | 1 | 10 | 67 | 7500 | | 4 | 4200 | 4800 | 32 | 2400 | 3840 |
| Cincinnati | 108,029 | 32,661 | 2387 | 1488 | 144,565 | 23 | 5 | 1 | 12 | 41 | 5980 | | 2 | 3180 | 3580 | 10 | 2180 | 2830 |
| Colorado ²⁰ | 132,547 | | 1500 | 27,890 ² | 161,937 | 17 | 4 | 1 | 6 | 28 | 6000 | 4000 | 10 | 2350 | 3200 | 5 | 2200 | 2200 |
| Colorado A. & M. ²⁰ | 44,747 | | | | 44,747 | 5 ¹ | 1 | | 5 | 11 ¹ | 3800 | 2500 | | | | 3 ¹ | 1900 | 2400 |
| Dartmouth | 133,650 | 95,150 | | 40,105 ⁸ | 268,905 | 29 ¹ | 4 | 2 | 31 | 66 | 7800 | | 7 | 1920 | 3300 | 12 | 1800 | 3900 |
| Denver | 145,476 | | 1078 | 2090 | 148,644 | 29 ¹ | | 1 | 17 ³ | 46 ¹ | | 8 | 2700 | 4200 | 15 ¹ | 2200 | 2700 | |
| Duke | 289,128 | 9104 | 490 | 33,481 | 332,203 | 37 ¹ | 20 ¹ | 2 | 11 | 71 | | 6 | 2500 | 3500 | 22 ¹ | 1800 | 3100 | |
| Georgia | 138,141 | | | | 138,141 | 19 | 7 | 1 | 8 ¹ | 35 ¹ | 6600 | 3500 | 3 | 2900 | 3500 | 9 | 1800 | 3000 |
| Harvard | 276,618 | 342,323 | 22,977 | 345,034 ⁷ | 986,952 | 56 ¹ | 31 ¹ | 9 ¹ | 111 ¹ | 207 ¹ | | 3 | 3 | 11 | 52 ¹ | 1980 | 6000 | |
| Howard (Washington, D.C.) | 110,220 | | | | 110,220 | 12 | 3 | 1 | 3 | 22 | | | 5 | | | 6 | 2645 | 2645 |
| Indiana | 291,500 | | | 60,000 ² | 351,500 | 41 | 3 | 1 | 22 | 67 | | 6 | 6 | 19 | 16 | | | |
| Iowa ²⁰ | 265,646 | | | 429 | 266,075 | 31 ¹ | 13 ¹ | 2 | 2 | 49 | | | 7 | 2160 | 2769 | 11 | 2001 | 2418 |
| Iowa State ²⁰ | 177,149 | | | 1500 | 178,649 | 15 | 18 | 2 | 17 | 52 | 6790 | 6740 | 6 | 2258 | 3490 | 7 | 2258 | 2580 |
| Joint University Libraries | 37,573 | 39,699 | 5809 | 130,788 ¹² | 213,869 | 27 | 3 ¹ | 1 | 7 | 38 ¹ | | | 6 | | | 5 ¹ | | |
| Kansas | 121,890 | | | 19,999 ⁸ | 141,889 | 21 | 4 | 1 | 4 | 30 | 5200 | 3800 | 10 | 1350 | 2700 | 4 | 2100 | 2300 |
| Louisiana State ²⁰ | 223,770 | | | | 223,770 | 33 ¹ | 13 | 2 | 9 | 57 ¹ | 6000 | 4500 ²⁸ | 5 | 3300 | 4000 | 16 ¹ | 2200 | 5600 ²⁷ |
| Michigan | 592,247 | 22,062 | | | 614,309 | 108 | 25 | | 5 | 138 | 8140 ²¹ | 7350 ²² | 9 | 4040 | 4540 | 68 | 1920 | 4190 |
| Minnesota | 324,691 | 1321 | 1152 | 57,058 ⁹ | 384,222 | 87 | | | 43 | 130 ²⁷ | 9775 | 6000 | 4 | 4584 | 5664 | 47 | 2256 | 3960 |
| Missouri ²⁰ | 191,899 | | | | 191,899 | 20 ¹ | 12 | 1 | 5 | 38 ¹ | 5800 | | 3 ¹ | 2800 | 3300 | 10 | 1700 | 2500 |
| Mount Holyoke | 37,856 | 7522 | 1353 | 12,816 ⁹ | 59,547 | 7 | | | 5 | 38 ¹ | | | 2 | | | 4 | | |
| New Hampshire | 58,102 | | 44 | 774 | 58,920 | 9 | 6 | | 3 | 14 | | | 2 | | | 6 | | |
| New York ²⁰ | 418,958 | 4617 | 11,571 | 65 | 435,211 | 44 | | | 96 | 140 | 7200 | | 7 | 2600 | 3600 | 26 | 2400 | 3000 |
| North Carolina | 169,079 | 9428 | 13,347 | 4887 | 195,741 | 36 ¹ | 9 | 1 | 11 | 57 ¹ | 6900 | 4500 | 6 | 3240 | 3880 | 18 ¹ | 2280 | 2820 |
| North Dakota | 19,550 | | | | 19,550 | 5 | | | 5 | 3900 | | | 3 | 2800 | 2900 | 1 | 2600 | |
| Northwestern | 383,436 | 27,760 | 7215 | 53,032 ¹¹ | 471,443 | 33 | 7 | 1 | 25 ¹ | 66 ¹ | 9500 | | 8 | 2640 | 5000 | 19 | 2200 | 3000 |
| Oberlin ²⁰ | 85,582 | 18,023 | 10 | 8400 ¹¹ | 112,015 | 17 ² | 3 | 1 | 13 ¹ | 35 ¹ | 7900 | | 3 | 3000 | 3000 | 12 | 1880 | 2700 |
| Oklahoma | | | | | | 13 | 4 | | 2 | 19 | 4800 | 3500 | 5 | 2000 | 3200 | 6 | 1620 | 2400 |
| Oregon ²⁰ | 145,779 | 1432 | 1419 | 15,152 ³ | 163,782 | 24 ¹ | 2 ¹ | 1 ¹ | 9 ¹ | 37 ¹ | 5500 | | 4 ¹ | 2900 | 3400 | 17 ¹ | 2000 | 2600 |
| Oregon State | 124,930 | | 689 | 7509 ² | 133,128 | 22 ² | | | 12 ¹ | 36 ¹ | 6200 ²⁸ | 4200 | 3 ¹ | 3000 | 3500 | 18 | 2200 | 3410 |
| Pennsylvania | 325,624 | 12,939 | 10,928 | 2129 | 351,620 | 31 | 29 | 3 | 26 | 89 | 10,500 | | 7 | 2100 | 3750 | 18 | 2160 | 2940 |
| Pennsylvania State | 191,243 | 520 | 18 | 2030 | 193,811 | 28 | | | 22 | 50 | 6100 | | 5 | 2900 | 3300 | 13 | 2200 | 2600 |
| Pittsburgh | 87,880 | 1800 | 200 | | 89,880 | 17 ¹ | 13 | 1 | 18 | 49 ¹ | | | 3 | | | 9 ¹ | | |
| Princeton ²⁰ | 223,722 | 32,945 | 4143 | 66,092 ²⁸ | 326,902 | 26 ¹ | 21 | 4 | 35 ¹ | 87 | | | 3 | 4500 | 5000 | 15 | 2100 | 3500 |
| Rochester ²⁰ | 161,520 | 17,617 | 632 | 17,171 ²⁸ | 196,940 | 27 | 9 | 1 | 9 | 46 | | | 7 | 2400 | 3600 | 8 | 1900 | 2800 |
| Smith | | | | | | 14 | 7 ¹ | | 8 ¹ | 29 ¹ | | | 6 | | | 7 | | |
| South Dakota State ²⁰ | 19,680 | | | 7060 | 26,740 | 4 | 2 | | 1 | 7 | 4200 | | 3 | 2000 | 2850 | | | |
| Southern Methodist | 118,640 | 306 | 356 | | 119,302 | 18 ¹ | | | 6 | 24 ¹ | 4000 | 3333 | 4 | 2700 | 3200 | 10 | 1900 | 2700 |
| Syracuse | 156,158 | 7353 | 3493 | 1851 ⁸ | 168,855 | 38 ¹ | 9 | 2 | 11 | 60 ¹ | 7000 ²⁵ | 3192 | 3 | 2832 | 2892 | 17 | 1872 | 2532 |
| Temple ²⁰ | 121,645 | | | 2475 | 124,120 | 22 ¹ | 5 | 1 | 11 | 39 ¹ | | | 6 | 2400 | 3000 | 11 | 2040 | 2400 |
| Texas | 313,129 | 4061 | 1105 | 35,189 ⁸ | 353,484 | 40 ¹ | 4 | 1 | 17 | 62 ¹ | 6800 | 4500 | 4 | 3100 | 3700 | 16 | 2300 | 3300 |
| Vassar | 78,793 | 16,570 | 4376 | 5015 ⁸ | 104,754 | 15 ¹ | | | 17 | 32 ¹ | 5500 | | 5 | 3200 | 4300 | 7 ¹ | 2600 | 3000 |
| Virginia State | | | | | | | | | | | | | | | | | | |
| Washington (St. Louis) | 92,391 ¹² | 3056 | 4553 | | 100,000 | 13 | 9 | 1 | 7 | 30 | | | 4 | 3000 | 3500 | 8 | 2000 | 2600 |
| Washington (Seattle) | 297,652 | | | | 297,652 | 37 ¹ | | 1 | 79 ¹ | 118 ¹ | 7500 | | 4 | 4500 | 4500 | 28 ¹ | 2400 | 3720 |
| Wayne ²⁰ | 214,253 | | | | 214,253 | 18 ¹ | 9 | | 6 ¹ | 34 | 8450 | | 6 | 4174 | 5498 | 10 ¹ | 3174 | 4908 |
| Wellesley | | | | | | 18 | 4 | 2 | 6 | 30 | | | 2 | | | 12 | | |
| Yale ²⁰ | 674,193 | 205,937 | 199,939 | 106,985 ¹⁴ | 1,187,054 | 57 ¹ | | | 85 ¹ | 142 ¹ | | | 4 | | | 50 ¹ | | |
| High | 762,893 | 342,323 | 199,939 | 345,034 ⁷ | 1,187,054 | 108 | 60 ¹ | 9 ¹ | 111 ¹ | 207 ¹ | 10,500 | 7350 ²² | 18 | 4584 | 6840 ²² | 68 | 3174 | 6000 |
| Median | 156,158 | 12,939 | 1386 ⁶ | 12,020 | 193,811 | 25 ¹ | 5 | 1 | 11 | 43 ¹ | 6425 ⁴⁰ | 4500 | 5 | 2900 | 3500 | 12 | 2100 | 2885 ⁴⁰ |
| Low | 19,550 | 306 | 10 | 65 | 19,550 | 4 | 1 | 1 | 1 | 5 | 3800 | 3192 | 2 | 1350 | 2700 | 1 | 1500 | 2200 |
| N ²⁹ | 47 | 27 | 30 | 35 | 47 | 50 | 39 | 34 | 49 | 50 | 34 | 17 | 48 | 39 | 39 | 50 | 43 | 42 |

1 Includes income from trust funds and invested funds specifically designated for library purposes. 2 Includes medical library which is part of university library system but on separate budget. 3 Unexpended balance. 4 Includes \$50,965 unexpended balance. 5 Includes \$231,632 unexpended balance. 6 Includes \$36,877 unexpended balance. 7 Includes \$139,401 unexpended balance. 8 Includes \$13,894 unexpended balance. 9 Includes \$4929 unexpended balance. 10 Includes \$4346 unexpended balance. 11 Not reported. 12 Includes \$7505 unexpended balance. 13 Central library only. 14 Includes \$6,450 unexpended balance. 15 Excludes archives staff and staff of art and music libraries. 16 Acting librarian. 17 Salaries as of Jan. 1, 1948, unless otherwise noted. 18 3 associate or assistant librarians; range, \$3600 to \$6300. 19 Confidential. 20 Associate director, \$4740; assistant director, \$4165. 21 Balance of salary paid from budget of College of Literature, Science, and the Arts. 22 \$375 additional as instructor in library science during academic year. 23 4 associate or assistant librarians; range, \$4200 to \$5000. 24 3 associate or assistant librarians;

range, \$3650 to \$5000. 25 \$500 additional for summer school; $\frac{1}{2}$ of \$6500 paid for library school. 26 Includes \$51,831 unexpended balance. 27 Includes 14 professional staff members and 2 clerks not on central library budget. 28 Also director of libraries of Oregon State System of Higher Education. $\frac{1}{2}$ of salary charged to central library office. 29 20% of salary of head order librarian and 10% of salary of head cataloger are charged to central library office. 30 Salaries as of June 30, 1947. 31 Associate librarian, \$5940; assistant librarian, \$5340. 32 Maximum figure is salary of director of Bancroft Library. 33 Salaries as of Feb. 1, 1948. 34 Director $\frac{1}{2}$ time at \$1000. 35 All university libraries. 36 2 associate or assistant librarians. 37 Maximum salary is for librarian emeritus. 38 7 librarians of libraries in the system, \$2700 to \$5700; 4 associate or assistant librarians, \$3000 to \$5000. 39 Number of libraries on which high, median, and low are based. 40 Average of 2 medians. 41 Includes \$38,618 unexpended balance. 42 Includes \$14,978 unexpended balance. 43 Includes \$1690 unexpended balance.

College and University Library General Statistics (Group I)

| Library | Salaries ¹¹ | | | | | | | | | | | | Number of Months for Which Salary Is Paid | | Hours per Week Required of Each Full-Time Staff Member | | Number of Days Allowed With Pay As: | | | | Sabbatical Leave | Rates of Pay for Student Service | |
|--|---|-------------------|------------------------|----------------------------|--------|--------|--|--------|--------------------|------------------|------------------------------|------------------|---|------------------------|--|------------------|-------------------------------------|------------------|------------------------------|------------------|------------------|----------------------------------|------------------|
| | School, College, and Departmental Libraries | | | Subprofessional Assistants | | | Clerical, Administrative, Assistants and Other | | | Professional | Subprofessional and Clerical | Professional | Subprofessional and Clerical | Professional | Subprofessional and Clerical | Professional | Subprofessional and Clerical | Professional | Subprofessional and Clerical | Min. | | Max. | |
| | No. | Head | Central Library Budget | No. | Min. | Max. | No. | Min. | Max. | | | | | | | | | | | | | | No. |
| Alabama | 4 | \$3550 | \$4300 | 10 | \$1900 | \$2800 | 1 | \$2000 | 5 | \$1600 | \$1700 | 12 | 12 | 40 | 40 | 24 | 12 | 5 | 5 | None | .35 | .50 | |
| Arizona | 1 | 2100 | | 1 | 2100 | | 1 | 2100 | 1 | 2100 | | 12 | 12 | 39 | 39 | 26 | 26 | 12 | 12 | | .50 | .70 | |
| Brown | 3 | 2400 | 3000 | 23 | 1300 | \$2400 | 29 | 1040 | 2500 | 12 | 12 | 38 ⁸ | 38 ⁸ | 24 | 24 | 7 | 7 | 7 | 7 | | .60 | .80 | |
| California (Berkeley) | 5 | 2760 | 4140 | 7 ⁴ | 2640 | 3240 | 60 ⁴ | 2220 | 3120 | 37 | 1920 | 3960 | 12 | 12 | 40 | 40 | 15 | 8 | 8 | | .80 | 1.27 | |
| California (Los Angeles) ¹² | 5 | 2220 | 3840 | 14 | 1980 | 2160 | 11 | 1800 | 2400 | 12 | 12 | 40 ⁵ | 40 ⁵ | 24 | 15 | 8 | 8 | 8 | 8 | None | .65 | 1.15 | |
| Cincinnati | 10 | 1860 | 2480 | 5 | 1680 | 2240 | 13 | 1320 | 2880 | 12 | 12 | 41 ⁷ | 41 ⁷ | 24 | 15 | 14 | 14 | 14 | 14 | | .40 | .60 | |
| Colorado ¹² | 2 ⁴ | 1740 | 1740 | 4 | 1560 | 1800 | 5 | 1440 | 2220 | 12 | 12 | 40 | 40 | 26 | 13 | 9 | 9 | 9 | 9 | None | .60 | .70 | |
| Colorado A. & M. ¹² | 1 | 1000 | | 1 | 1000 | | 5 | 1440 | 1440 | 12 | 12 | 40 | 40 | 24 | 24 ⁵² | 8 | 8 | 8 | 8 | Professional | .45 | .60 | |
| Dartmouth | 3 | 1920 | 2550 | 1 | 1740 | | 4 | 1620 | 1710 | 35 | 1320 | 2700 | 12 | 12 | 39 | 39 | 33 | 22 | 5 | 11 | | .65 | .65 |
| Denver | 2 ¹ | 2400 | 2700 | 1 ⁴ | 2200 | 2500 | 18 ² | 1440 | 1980 | 18 | 1440 | 1980 | 12 | 12 | 38 ¹⁰ | 38 ¹⁰ | 26 | 12 | 15 | 15 | None | .50 | .75 |
| Duke | 2 | 3000 | 3100 | 6 | 1800 | 2700 | 20 ⁴ | 1320 | 1900 | 13 | 1300 | 1800 | 12 | 12 | 39 ⁴ | 39 ⁴ | 26 | 26 | 10 | 10 | | .45 | .60 |
| Georgia | 5 | 2300 | 2900 | 7 | 1440 | 1980 | 9 ⁴ | 1440 | 1980 | 12 | 12 | 39 | 39 | 26 | 13 | 10 | 10 | 10 | 10 | None | .35 | .50 | |
| Harvard | 31 | 1680 | 2400 | 120 ⁵ | 1260 | 4000 | 4 | 1954 | 2189 | 12 | 12 | 40 | 40 | 24 | 26 | 18 | 11 | 11 | 11 | None | .55 | .80 | |
| Howard (Washington, D. C.) | 6 | 1954 | 2394 | 4 | 1954 | 2189 | 4 | 1954 | 2189 | 12 | 12 | 40 | 40 | 26 | 26 | 8 | 8 | 8 | 8 | | .35 | .50 | |
| Indiana | 13 | 1320 | 1740 | 4 | 1320 | 1740 | 13 | 1320 | 1740 | 23 | 1320 | 1740 | 12 | 12 | 40 | 40 | 26 | 12 | 7 | 7 | | .50 | .65 |
| Iowa ¹² | 1 | 3252 | | 9 | 2181 | 2769 | 13 ⁴ | 1100 | 1743 | 4 | 1440 | 2025 | 12 | 12 | 40 | 40 | 26 | 12 | 6 | 7 | None | .30 | .80 ⁴ |
| Iowa State ¹² | 18 | 1320 | 1920 | 19 | 1200 | 1620 | 19 | 1200 | 1620 | 12 | 12 | 43 | 43 | 26 | 12 | 7 | 7 | 7 | 7 | None | .50 | .65 | |
| Joint University Libraries | 7 | | | 7 ⁴ | | | 3 ⁴ | | | 8 | | | 12 | 12 | 40 | 40 | 26 | 12 | 7 | 7 | | .50 | .65 |
| Kansas | 5 | 1600 | 2700 | 4 | 1800 | 1900 | 5 | 1416 | 1632 | 12 | 12 | 40 ¹⁴ | 40 ¹⁴ | 26 | 12 | 6 | 8 | 8 | 8 | None | .40 | .65 | |
| Louisiana State ¹⁶ | 8 ¹ | 2640 | 3080 | 13 | 1980 | 2310 | 11 | 1380 | 2750 | 12 | 12 | 39 | 39 | 30 ¹⁵ | 30 ¹⁵ | 16 | 16 | 16 | 16 | | .35 | .60 | |
| Michigan | 18 | 2440 | 4490 | 11 | 2060 | 3390 | 25 | 1920 | 2160 | 5 | 1680 | 2500 | 12 | 12 | 40 | 40 | 24 | 24 | 5 | 5 | | .75 | .91 |
| Minnesota | 8 ¹⁹ | 2256 | 4152 | 6 ¹⁸ | 2256 | 3120 | 41 ¹⁵ | 1560 | 3096 | 12 | 12 | 40 | 40 | 12 ¹⁹ to 21 | 12 ¹⁹ to 15 | 11 | 11 | 11 | 11 | None | .75 | .91 | |
| Missouri ¹² | 6 | 1800 | 3200 | 12 | 1500 | 1800 | 6 | 1320 | 1500 | 12 | 12 | 39 | 39 | 26 | 26 | 4 | 4 | 4 | 4 | | .40 | .60 | |
| Mount Holyoke | 2 | | | 2 | | | 2 | | | 2 | | | 12 | 12 | 40 | 40 | 26 | 26 | 4 | 4 | | .40 | .60 |
| New Hampshire | 6 | | | 6 | | | 6 | | | 6 | | | 12 | 12 | 40 | 40 | 26 | 26 | 4 | 4 | | .40 | .60 |
| New York ¹² | 96 | | | 96 | | | 96 | | | 96 | | | 12 | 12 | 40 | 40 | 26 | 26 | 4 | 4 | | .40 | .60 |
| North Carolina | 6 ¹ | 2100 | 3240 | 1 | 2400 | | 9 | 1680 | 2400 | 12 | 1440 | 3000 | 12 | 12 | 38 | 35 | 14 | 14 | 14 | 14 | None | .45 | .75 |
| North Dakota | 12 | | | 12 | | | 12 | | | 12 | | | 12 | 12 | 40 | 40 | 26 | 26 | 4 | 4 | | .40 | .60 |
| Northwestern | 3 | 2400 | 3600 | 2 | 2100 | 2460 | 7 | 1800 | 2100 | 26 ⁴ | 1560 | 2580 | 12 | 12 | 37 ⁴ | 37 ⁴ | 27 | 18 | 6 | 6 | None | .50 | 1.25 |
| Oberlin ¹² | 1 ¹⁷ | 1400 | 2240 | 3 | 1460 | 1820 | 14 ³ | 900 | 2300 | 12 | 12 | 39 ²⁸ | 39 ²⁸ | 26 | 26 | 10 ⁴ | 10 ⁴ | 10 ⁴ | 10 ⁴ | | .35 | .75 | |
| Oklahoma | 4 | 1200 | 1320 | 2 | 1320 | 1500 | 12 | 12 | 1500 | 12 | 12 | 39 | 39 | 26 | 26 | 10 | 10 | 10 | 10 | | .40 | .50 | |
| Oregon ¹² | 1 ²⁵ | 2400 ⁴ | 2600 | 2 ¹⁶ | 1500 | 1860 | 11 ^{3,5,6} | 1344 | 1800 | 12 | 12 | 40 | 40 | 26 to 27 | 12 | 6 | 12 | 6 | 12 | | .30 | .40 | |
| Oregon State | 13 | | | 13 | | | 13 | | | 13 | | | 12 | 12 | 40 | 40 | 26 to 27 | 12 | 6 | 12 | | .30 | .40 |
| Pennsylvania | 1 | 2700 | | 29 | 1560 | 1560 | 29 | 780 | 3400 | 42 | 12 | 37 ²² | 37 ²² | 26 | 26 | 13 | 13 | 13 | 13 | | .65 | 1.25 | |
| Pennsylvania State | 4 | 2500 | 4000 | 2 | 2400 | 2400 | 22 | 1300 | 2075 | 12 | 12 | 40 | 40 | 30 | 30 | 6 | 6 | 6 | 6 | | .50 | 1.25 | |
| Pittsburgh | 4 | | | 13 | | | 13 | | | 19 | | | 12 | 12 | 40 | 40 | 26 | 26 | 13 | 13 | | .75 | 1.00 |
| Princeton ¹² | 6 ¹ | 2250 | 3150 | 21 | 1400 | 2700 | 39 ¹ | 1080 | 2100 | 12 | 12 | 38 | 38 | 26 | 26 | 13 | 13 | 13 | 13 | | .75 | 1.00 | |
| Rochester ¹² | 4 | 2350 | 3300 | 7 | 1900 | 2600 | 9 | 1404 | 1600 | 10 | 1248 | 1900 | 12 | 12 | 40 ⁵¹ | 40 ⁵¹ | 26 | 12 | 9 | 9 | None | .50 | .75 |
| Smith | 7 ¹ | | | 7 ¹ | | | 7 ¹ | | | 8 ¹ | | | 12 | 12 | 40 ⁵⁴ | 40 ⁵⁴ | 26 | 26 | 24 ³⁸ | 24 ³⁸ | | .50 | .75 |
| South Dakota State ¹² | 2 | 1320 | 1500 | 1 | 1320 | 1500 | 1 | 1320 | 1500 | 12 | 12 | 40 | 40 | 30 | 14 | 7 | 7 | 7 | 7 | None | .50 | .50 | |
| Southern Methodist | 2 ⁴ | 1800 | 2800 | 6 | 1320 | 1800 | 6 | 1320 | 1800 | 12 | 12 | 40 | 40 | 26 | 26 | 10 | 10 | 10 | 10 | | .40 | .85 | |
| Syracuse | 10 | 1872 | 2532 | 6 ⁴ | 1872 | 2292 | 9 | 1200 | 1320 | 13 | 1380 | 2772 | 12 | 12 | 40 ²⁷ | 40 ²⁷ | 26 | 26 | 10 | 10 | | .50 | .65 |
| Temple ¹² | 2 ¹ | 1800 | 2640 | 2 | 1900 | 2100 | 5 | 1600 | 1800 | 12 | 1200 | 1620 | 12 | 12 | 39 ⁸ | 39 ⁸ | 26 | 26 ⁴⁸ | 14 | 14 | None | .50 | 1.00 |
| Texas | 14 ³ | 2200 | 4000 | 4 | 2300 | 2600 | 4 | 1860 | 2300 | 18 | 1740 | 3100 | 12 | 12 | 39 | 45 | 18 | 18 | 10 | 10 | None | .40 | .55 |
| Vassar | 2 | 2450 | 3600 | 2 | 2450 | 3600 | 17 | 1248 | 1748 | 12 | 12 | 38 ⁴ | 38 ⁴ | 22 | 11 | 17 | 10 ⁴ | 10 ⁴ | 10 ⁴ | | .50 | .65 | |
| Virginia State | 3 | | | 3 | | | 3 | | | 3 | | | 12 | 12 | 39 | 39 | 15 | 15 | 18 | 18 | | .50 | .65 |
| Washington (St. Louis) | 9 | 1500 | 1800 | 8 | 1200 | 2000 | 8 | 1200 | 2000 | 12 | 12 | 38 | 38 | 26 | 26 | 13 | 13 | 13 | 13 | None | .60 | .75 | |
| Washington (Seattle) | 4 ¹ | 2496 | 3480 | 80 ⁴ | 1680 | 2700 | 80 ⁴ | 1680 | 2700 | 12 | 12 | 40 | 40 | 14 | 14 | 8 | 8 | 8 | 8 | None | .65 | .65 | |
| Wayne ¹² | 1 | 3874 | | 9 | 2535 | 2667 | 6 ⁴ | 1960 | 3144 | 12 | 12 | 40 | 40 | 22 | 15 | 6 | 6 | 6 | 6 | None | .50 | .75 | |
| Wellesley | 3 | | | 4 | | | 8 | | | 8 | | | 12 | 12 | 38 ⁸ | 38 ⁸ | 41 | 41 ²⁹ | 10 | 10 | | .50 | .75 |
| Yale ¹² | 85 | 1300 | 2580 | 85 | 1300 | 2580 | 85 | 1300 | 2580 | 12 | 12 | 38 ⁴⁰ | 38 ⁴⁰ | 26 | 26 | 7 ²⁷ | 7 ²⁷ | 7 ²⁷ | 7 ²⁷ | None | .39 | .39 | |
| High | 18 | 3874 | 4490 | 11 | 2640 | 3600 | 60 ² | 2535 | 3120 | 120 ⁵ | 2100 | 4000 | 12 | 12 | 43 | 45 | 41 | 41 | 24 | 24 | | .80 | 1.27 |
| Median | 4 | 2350 | 3090 ⁵⁰ | 6 | 2181 | 2700 | 7 | 1560 | 1910 ⁵⁰ | 12 | 1320 | 2189 | 12 | 12 | 39 | 30 | 26 | 18 | 9 | 10 | | .50 | .70 |
| Low | 1 | 1400 | 1740 | 1 | 1740 | 2100 | 1 | 1000 | 1320 | 1 | 780 | 1400 | 12 | 12 | 37 | 35 | 14 | 11 | 4 | 4 | | .30 | .50 |
| N ⁴⁹ | 33 | 29 | 26 | 19 | 17 | 15 | 39 | 32 | 30 | 49 | 41 | 39 | 46 | 45 | 46 | 44 | 37 | 38 | 45 | 42 | | .39 | .39 |

1 Includes central library and school, college and departmental libraries. 2 Not reported. 3 Staff having faculty rank. 4 Librarian and director of Bancroft Library, who hold professorship. 5 Public departments—38 hours, 6 35 hours during summer sessions and summer vacation. 7 39¹ hours during summer sessions and summer vacation. 8 1 month. 9 No stated policy. 10 33 hours during university vacations. 11 Librarian on same terms as teaching faculty. 12 All professional librarians at half pay. 13 Confidential. 14 3¹ hours during university vacations. 15 1¹ professional and subprofessional are calendar days. 16 working days for clerical. 16¹ professional staff with rank of assistant librarian or higher on basis of 1 year with half salary or half year with full salary. 17 Director allowed 1 year with half salary or half year with full salary. 18 Excludes 14 professional staff members and 2 clerks in 9 other departmental libraries not on central budget. 19 Professional and clerical get 1 day per month for 5 day week and 1¹ days per month for 5¹ day week. Department heads get an additional half day per month. 20 44 hours for clerical. 21 Librarian gets 1 year after each 7 years' service. 22 Subprofessional, 1 month; clerical, 2 weeks. 23 Professional, 1 year in 7 at full salary. 24 Clerical, 3 months' service—1 week; 6 months' service—2 weeks; 5 years' service—3 weeks; 10 years' service—4 weeks. 25 Same as teaching staff at Christmas, Thanksgiving and spring. 26 36 hours

during July and August. 27 Several special Saturdays in addition. 28 Subprofessional and clerical, 2 weeks. 29 24 days for clerical. 30 Staff having rank of assistant professor or above; 1 year on half salary or 4 months on full salary. 31 Staff members with rank of assistant professor or above; 6 months on full salary or 1 year on half salary. 32 34⁴ days during summer session. 33 2 weeks for less than 5 years' service, 3 weeks for over 5 years' service. 34 30 hours during Christmas vacation and 1 month of summer vacation. 35 Includes 10 days at Christmas and 7 days at Easter. 36 All professional staff members are eligible for 1 extra month with pay every 7th year. 37 38 hours during university vacation. 38 Director only as professor in library school. 39 Librarian and 3 research librarians. All year on half salary or 1 semester on full salary. 40 35 hours during all periods except regular session. 41 Salaries as of Jan. 1, 1948, unless otherwise noted. 42 Salaries as of June 30, 1947. 43 10 month basis. 44 44 hours for clerical. 45 Clerical assistants. 46 Salaries as of Feb. 1, 1948. 47 41 hours for clerical. 48 14 days for clerical. 49 Number of libraries on which high, median, and low are based. 50 Average of 2 medians. 51 36 hours during summer vacation. 52 15 days for clerical.

College and University Library Gen-

| Library | Fiscal Year Ending | Student Enrolment | | Faculty Members | | Book Stock | Circulation | | Sta I Salaries |
|---|--------------------|--------------------|-------------------|-----------------|----------------|------------|---------------------------|----------------------|-----------------------|
| | | Regular Session | Summer Session | Regular Session | Summer Session | | Volumes Lent for Home Use | Re-served Book Loans | |
| Agnes Scott | 30Je47 | 530 | | 55 | .. | 53,733 | 8277 | | \$ 9680.40 |
| Albion | 30Je47 | 1063 | | 70 | .. | 66,991 | 38,127 | 4136 | 7500.00 |
| Allegheny | 1Jy47 | 1056 | 353 | 62 | 22 | 114,279 | 20,221 | 9976 | 11,119.46 |
| Amherst | 30Je47 | 1174 | 506 | 130 | 56 | 263,636 | 33,702 | 121,936 | 33,565.00 |
| Augustana | 30Jy47 | 947 | 250 | 52 | 17 | 18,946 | 5256 | 6363 | 4775.00 |
| Baldwin-Wallace | 30Je47 | 1557 | 778 | 69 | .. | 48,980 | 29,837 | 11,423 | 10,611.86 |
| Bates | 30Je47 | 771 | | 68 | .. | 76,708 | 37,565 | 55,376 | 9243.39 |
| Belcit | 30Je47 | 920 | | 79 | .. | 143,918 | 9969 | 16,525 | 13,759.69 |
| Birmingham-Southern | 31Ag47 | 1481 | 796 | 65 | 55 | 62,477 | 15,607 | 15,077 | 12,509.50 |
| Bowdoin | 30Je47 | 966 | 655 | 69 | 60 | 216,308 | 19,809 | 28,835 | 20,078.00 |
| Bryn Mawr | 30Je47 | 659 | | 77½ | .. | 200,374 | 31,816 | 8255 | |
| Coe | 31Ag47 | 803 | 413 ^{1a} | 41 | 24 | 55,893 | 11,575 | 25,913 | 6300.00 |
| Colby | 30Je47 | 893 | | 80 | .. | 124,608 | 15,011 | 8455 ² | 14,943.34 |
| Colorado | 30Je47 | 1125 | 594 | 72 | 58 | 186,604 | 24,133 | 36,609 | 13,117.00 |
| Concordia | 30Je47 | 1102 | 131 | 54 | 12 | 33,713 | 9347 | 27,771 | 3896.59 |
| Connecticut | 30Je47 | 841 | 265 | 119 | 29 | 117,866 | 27,653 | 11,608 | 27,532.39 |
| Denison | 30Jy47 | 1189 | | 73 | .. | 113,833 | 28,828 | 16,181 | 20,543.40 |
| Dickinson | 30Je47 | 824 | 288 ^{1b} | 63 | 19 | 77,994 | 14,581 | 11,657 | 8787.00 |
| Earlham | 30Je47 | 669 | | 40 | .. | 71,480 | 19,045 | 32,690 | 6617.09 |
| Elmira | 30Je47 | 393 | | 51 | .. | 57,997 | 6449 | 6077 ² | 7138.45 |
| Emory and Henry | 31Ag47 | 472 | 268 | 24 | 19 | 23,598 | 11,343 | | 2400.00 |
| Fisk | 1Jy47 | 916 | 199 | 59 | 12 | 92,819 | 30,600 | 52,105 | 19,725.69 |
| Goucher | 30Je47 | 607 | | 78 | .. | 86,380 | 20,382 | 19,748 | 18,845.44 |
| Hartilton | 30Je47 | 584 | 254 | 54 | 30 | 213,113 | 19,933 | 13,458 | 18,777.00 |
| Haverford | 31Ag47 | 503 | | 54 | .. | 172,029 | 26,546 | 4120 ² | 17,794.50 |
| Hope | 1Je47 | 1152 | 95 | 62 | 12 | 39,907 | 10,363 | 24,814 | 8300.00 |
| Illinois Wesleyan | 31Jy47 | 1159 ¹⁰ | | 73 | 23 | 45,070 | 7150 | 33,587 | 5695.00 |
| James Millikin | 30Je47 | 1316 | 357 | 55 | 36 | 41,531 | 8210 | 24,236 | 7977.18 |
| Juniata | | | | | | | | | |
| Lawrence | 30Je47 | 1041 | | 75 | .. | 75,716 | 12,606 | 19,790 | 11,345.00 |
| Madison | 30Je47 | 1068 | 464 ^{1c} | 95 | 49 | 45,931 | 36,292 | 27,173 | 15,312.90 |
| Marietta | 31Ag47 | 1199 | 404 | 66 | 38 | 129,866 | 22,285 | 21,207 | 11,100.00 |
| Michigan College of Mining and Technology | 30Je47 | 1878 | 1278 | 108 | 108 | 47,332 | 4654 | 746 | 8714.17 |
| Middlebury | 30Je47 | | | | | 110,748 | 37,540 | 5564 ² | |
| Mills | 30Je47 | 688 | 346 | 97 | 55 | 95,233 | 24,103 | 9211 ² | 19,610.00 |
| Morningside | 31Jy47 | 1083 | 529 | 67½ | 46 | 54,600 | 7179 | 10,293 ² | 7599.94 |
| Mount Union | 30Je47 | 871 | 449 | 46 | 15 | 74,463 | 15,005 | | 6192.50 ¹¹ |
| New Rochelle | 15Je47 | 876 | | 65 | .. | 58,447 | 28,080 | 8389 ² | 6674.00 |
| Parsons | 31Ag47 | 406 | 300 | 25 | 21 | 25,829 | 9422 | 15,839 | 4612.50 |
| Pomona | | | | | | | | | |
| Randolph-Macon | 30Ap47 | 713 | | 73 | .. | 65,739 | 14,964 | 5080 ² | 15,350.00 |
| Reed | 30Je47 | 746 | | 57 | .. | 84,396 | 27,256 | 23,038 ² | 11,610.61 |
| St. Catherine | 30Je47 | 810 | 290 | 85 | 26 | 68,389 | 21,800 | 18,483 ² | 6114.25 ¹⁴ |
| Seneca | 30Je47 | 666 | 163 | 38 | 13 | 89,188 | 16,109 | 30,935 | 9205.75 |
| Sweet Briar | 30Je47 | 456 | | 56 | .. | 66,683 | 17,065 | 4056 ² | 12,953.22 |
| Trinity, San Antonio, Tex. | 1Sep47 | 1549 | 780 | 101 | 57 | 40,416 | 23,734 | | 11,250.00 |
| Valparaiso | 30Je47 | 1400 | 339 | 87 | 28 | 41,421 | 75,060 | 5407 ² | 7119.29 |
| Wake Forest | 30Je47 | 1448 | 843 | 60 | 49 | 70,327 | 12,711 | 27,434 | 11,636.16 |
| Washington and Jefferson | 30Je47 | 1018 | | 80 | 50 | 68,769 | 8547 | 3422 | 9298.17 |
| Washington and Lee | 30Je47 | 1259 ¹⁵ | 551 ¹⁵ | 74 | 28 | 135,970 | 23,445 | 5755 | 14,237.00 |
| Wesleyan, Middletown, Conn. | 30Je47 | 965 | | 113 | .. | | 29,008 | 36,977 | 34,579.85 |
| Westminster | 31Jy47 | 1360 | 397 | 79 | 22 | 35,117 | 19,759 | 35,169 | 6999.57 |
| Willamette | 30Je47 | 1110 | 236 | 66 | 39 | 42,939 | 14,995 | 7557 | 6600.00 |
| Williams | 30Je47 | 1063 | 593 | 120 | 79 | 195,859 | 17,923 | 4073 ² | 25,324.09 |
| Wooster | 30Ap47 | 1245 | 341 ^{1d} | 74 | 26 | 105,254 | 36,084 | 30,988 | 9875.00 |
| High | | 1878 | 1278 | 130 | 108 | 263,636 | 75,060 | 121,936 | 34,579.85 |
| Average | | 973 | 440 | 70 | 36 | 88,440 | 20,697 | 20,113 | 12,245.95 |
| Median | | 966 | 357 | 69 | 29 | 70,904 | 19,759 | 15,839 | 10,611.82 |
| Low | | 393 | 95 | 24 | 12 | 18,946 | 4654 | 746 | 2400.00 |

1^a Second session, 265. 1^b Second session, 256. 1^c Second session, 294. 1^d Second session, 288. 2 Overnight only. 3 in Libr'y. 8 Included clerical assistance. 9 Included equipment. 9^a Included in binding. 10 Included summer session. 11 Ha-tributed by the Sisters of St. Joseph. 14 Does not include buildings, additions, and alterations to buildings. 15 Included la

eral and Salary Statistics (Group II)

| Library Operating Expenditures Last Fiscal Year | | | | | | | Library Expenditures for New Equipment | Library Grand Total (Including Maintenance When on Library Budget) | Total College or University Expenditures Last Fiscal Year |
|---|------------|-------------|-----------------------|----------------------|----------------------|-------------|--|--|---|
| Student Service | Books | Periodicals | Binding and Rebinding | Supplies | Other | Total | | | |
| | \$ 7429.67 | \$2376.86 | \$1213.50 | \$ 105.98 | \$ 480.49 | \$21,286.90 | | \$21,286.90 | |
| \$2225.00 | 3524.00 | 1231.00 | 427.00 | 380.00 | | 15,287.00 | | 15,287.00 | \$ 385,797.00 |
| 2889.65 | 4999.63 | 1692.09 | 562.90 | 989.99 | 47.08 | 22,300.80 | | 22,300.80 | 508,895.41 |
| 2761.00 | 15,662.00 | 5252.00 | 2203.00 | 2206.00 | 1161.00 ³ | 62,810.00 | \$ 3297.00 | 66,107.00 | 1,183,634.00 |
| 667.00 | 4130.10 | 500.00 | 230.31 | 250.59 | | 10,562.00 | | 10,562.00 | |
| | 8554.93 | | | 1087.19 | | 20,253.98 | | 20,253.98 | 1,087,978.16 |
| 864.90 | 3582.39 | 1012.00 | 800.00 | 428.40 | 80.00 | 16,261.08 | | 16,261.08 | 383,487.00 |
| 2545.52 | 3496.62 | 1920.64 | 1354.49 | 559.62 | 408.71 | 24,045.31 | 2234.56 | 26,329.87 | 447,728.85 |
| 2927.97 | 7216.14 | 1222.11 | 1748.74 | 814.03 | | 26,438.49 | | 26,438.49 | |
| 2986.00 | 8564.00 | 2993.00 | 1716.00 | 1248.00 ³ | | 37,585.00 | 1321.00 | 42,665.00 | |
| | 10,934.84 | 5072.85 | 3329.95 | 888.12 | 90.16 ³ | 20,315.92 | | 20,315.92 | |
| 1153.60 | 1445.06 | 812.17 | 435.73 | 454.25 | | 10,600.81 | | 10,600.81 | 383,056.87 |
| 2275.50 | 8063.95 | 1782.18 | 1316.78 | 764.62 | 259.63 ³ | 29,406.00 | | 29,406.00 | |
| 2558.00 | 2818.00 | 2125.00 | 1047.00 | 1660.00 | 33.00 ³ | 23,366.00 | | 23,366.00 | 475,931.00 |
| 1576.55 | 1698.92 | 569.81 | 206.90 | 410.29 | 805.17 ³ | 9179.23 | 445.84 | 9625.07 | 271,511.00 |
| 1565.33 | 16,434.16 | | | 894.31 | 703.70 ³ | 47,129.89 | 650.00 | 57,351.30 | 723,055.85 |
| 1865.21 | 5118.01 | 2679.65 | 1324.66 | 1054.31 ⁹ | 458.30 | 33,043.54 | | 33,043.54 | 614,219.00 |
| 6165.00 ⁵ | 5839.72 | 1191.18 | 865.87 | 722.25 | | 23,571.00 | | 23,571.00 | 550,000.00 |
| 2309.81 | 1924.60 | 1507.63 | 661.39 | 331.28 | | 13,351.80 | | 13,351.80 | 494,917.44 |
| 1209.40 | 2810.42 | 787.04 | 342.94 | 343.71 | 36.29 ³ | 12,668.25 | 87.25 | 12,755.50 | 420,037.82 |
| 1006.05 | 2311.39 | 1088.00 | 446.89 | | | 7252.33 | | 7252.33 | 137,427.56 |
| 2618.00 | 5911.34 | | 468.31 | | 1763.34 | 30,486.98 | | 30,486.98 | 507,162.45 |
| 722.30 | 5354.53 | | 1224.66 | 880.22 | 269.47 | 27,296.62 | | 27,296.62 | 202,973.00 |
| 1162.73 | 7167.51 | 3447.17 | 410.19 | 1462.62 ³ | 97.36 | 32,524.58 | | 32,524.58 | 575,557.45 |
| 602.18 | 7250.66 | | 668.00 | 800.85 ³ | 720.05 | 27,836.24 | | 27,836.24 | 652,621.29 |
| 1907.85 | 2221.60 | 633.32 | 495.76 | 129.78 | 117.04 | 13,805.35 | 200.38 | 14,005.73 | |
| 1650.00 | 3000.00 | 1100.00 | 110.00 | 20.00 | 120.00 ³ | 11,695.00 | | 11,695.00 | |
| 1722.98 | 3947.68 | | 675.62 | 280.59 | | 14,604.05 | | 14,734.85 | 417,410.06 |
| | 2936.00 | 1592.00 | 482.00 | 427.00 | 228.00 | 17,885.00 | | 17,885.00 | 516,000.00 |
| 2654.73 | 5118.13 | 1312.65 | 1436.85 | 461.02 | 375.14 ³ | 26,671.42 | | 28,052.14 | 407,405.01 |
| 2050.00 | 4556.28 | 1328.63 | 916.27 | 128.40 | 1081.09 ³ | 21,160.67 | 3606.50 | 24,767.17 | 483,000.00 |
| | 2572.23 | 2403.98 | 686.79 | | 1772.38 | 16,149.55 | | 16,149.55 | 779,408.34 |
| 1198.17 | 9502.79 | 1776.77 | 1806.76 | 125.00 | 350.00 ³ | 34,369.49 | 100.00 | 34,469.49 | 684,463.00 |
| 2127.19 | 5518.81 | 925.95 | 504.34 | 953.72 | | 17,629.95 | | 17,629.95 | 353,881.00 |
| 1613.86 | 3120.48 | 1170.57 | 1192.27 | 247.03 | 176.67 ³ | 13,713.38 | 218.41 | 13,931.79 | 186,629.92 ¹² |
| 2305.19 | 4477.84 | 409.79 | 1074.18 | 495.36 | 181.20 | 15,917.56 | | 15,917.56 | 990,496.24 |
| 965.70 | 3565.30 | 746.96 | 31.63 | 298.95 | 55.10 ³ | 10,276.14 | | 10,276.14 | |
| | 3667.27 | 1035.22 | 138.15 | | | 20,190.64 | | 20,190.64 | |
| 3119.10 | 9000.01 | | 843.95 | 918.63 | | 25,542.30 | | 25,542.30 | 381,486.75 |
| 3695.90 | 3006.99 | 1219.70 | 600.36 | 584.92 | 60.27 ³ | 15,282.39 | | 15,282.39 | 497,930.23 |
| 1561.09 | 3543.02 | 1234.08 | 812.12 | 828.72 | | 17,184.81 | | 17,184.81 | 396,449.70 |
| | 4353.30 | 1499.09 | 600.92 | 598.70 | 92.18 ³ | 20,097.41 | | 20,097.41 | 303,102.97 |
| 3545.67 | 6495.19 | 1462.95 | 1075.50 | 555.81 | | 24,385.12 | 5441.88 ⁴ | 43,889.89 | |
| 3059.93 | 4584.40 | 1045.14 | 436.25 | 406.79 | 139.49 ³ | 17,301.70 | 10,460.92 ¹⁴ | 174,095.10 | 548,429.00 |
| 1777.50 | 2828.90 | 843.39 | 50.35 | 220.92 | 108.56 ³ | 17,462.78 | 147.02 | 17,609.80 | 494,308.13 |
| 290.63 | 4616.32 | | 806.02 | 806.02 | 62.89 ³ | 15,674.03 | | 15,674.03 | 469,004.99 |
| | 8450.00 | 1500.00 | 1000.00 | 550.00 | 851.40 | 26,588.40 | | 26,588.40 | 331,368.00 |
| 6256.86 | 19,007.50 | | 3455.20 ³ | | | 63,299.41 | 826.39 | 64,125.80 | 1,290,163.00 |
| 4667.57 | 3467.31 | 976.35 | 250.15 | 326.90 | 108.92 ³ | 16,796.77 | | 16,796.77 | 377,000.00 |
| 1476.00 | 2133.00 | 1990.00 | 686.00 | 293.00 | 95.00 ³ | 13,273.00 | | 13,273.00 | 525,037.00 |
| 2517.32 | 9995.77 | 4160.11 | 2686.12 | 2114.95 | 4739.72 ⁷ | 44,281.04 | | 44,281.04 | 895,659.05 |
| 3012.17 | 3716.22 | 1434.37 | 700.46 | 509.83 | 65.11 ³ | 19,313.16 | | 19,313.16 | 642,474.07 |
| 6256.86 | 19,007.50 | 5252.00 | 3329.95 | 3455.20 | 4739.72 | 63,299.41 | 10,460.92 | 74,095.10 | 1,290,163.00 |
| 2193.49 | 5623.92 | 1652.64 | 884.70 | 716.82 | 516.56 | 22,411.74 | 2077.65 | 24,610.28 | 292,124.33 |
| 2050.00 | 4517.06 | 1312.65 | 686.79 | 554.81 | 181.20 | 20,144.03 | 738.20 | 20,222.31 | 494,308.13 |
| 290.63 | 1445.06 | 409.79 | 31.63 | 20.00 | 33.00 | 3351.80 | 87.25 | 7252.33 | 137,427.56 |

cluded telephone, postage. 4 Included under books. 5 Not included in library budget. 6 Included under Staff salaries. 7 Chapin of librarian's salary charged to teaching account. 12 Includes administration and instruction only. 13 Includes services con-school students.

| Library | Library Income Last Fiscal Year | | | | | Number of Full-Time Employees in | | | | Salaries ¹⁵ | | | | | | | | | | | | | | |
|---|------------------------------------|-----------------------------|-----------|-----------------------|-------------|----------------------------------|------------------------------|---------------------------|-------|------------------------------|----------------------|----------------------------------|-----------|------------------|---------|-------------------------|----------------------|---|---------|----------------------|----------------------|---------|---------|---------|
| | Allocation from Institution Budget | Income from Endowment Funds | Gifts | Other | Total | Professional | Subprofessional and Clerical | Administrative Assistants | Total | Associate or Chief Librarian | | Administrative Office Assistants | | Department Heads | | Professional Assistants | | Subprofessional and Clerical Assistants | | | | | | |
| | | | | | | | | | | Chief Librarian | Assistant Librarian | No. | Salary | No. | Min. | Max. | No. | Min. | Max. | No. | Min. | Max. | | |
| Agnes Scott | \$16,286.90 | | \$5000.00 | | \$21,286.90 | 3 | 2½ | .. | 5½ | | | | | | | 2 | \$2200.00 | | 2 | \$1250.00 | | | | |
| Albion | 15,300.00 | \$ 230.00 | | | 15,500.00 | 3 | 1 | .. | 3½ | | | | | | | | | | | | | | | |
| Allegheny | 20,820.00 | 976.26 | 492.12 | | 22,293.38 | 4 | 2 | .. | 6 | | | | | | | | | | | | | | | |
| Amherst | 51,882.00 | 11,435.00 | 424.00 | \$ 672.00 | 64,413.00 | 10½ | 3½ | .. | 15½ | | | | | | | 3 | \$200.00 | \$3000.00 | 6½ | 1800.00 | \$2300.00 | | | |
| Augustana | 04.51 | | | 4609.00 | 10,060.00 | 1 | 2 | .. | 3 | \$2600.00 | | | | | | | | | 3½ | 1140.00 | \$1620.00 | | | |
| Baldwin-Wallace | | | | | | 4 | | .. | 4 | | | | | | | | | | 2 | 1650.00 | 2025.00 | | | |
| Bates | 13,360.24 | 2537.06 | | 120.00 | 16,017.30 | 4 | | .. | 4 | 3200.00 | \$2400.00 | | | | | 2 | 1700.00 | 2200.00 | | | | | | |
| Beloit | 26,329.87 | | | | 26,329.87 | 4 | 8 | .. | 12 | 3250.00 | | | | | 1 | 3000.00 | | | 4 | 1320.00 | 1440.00 | | | |
| Birmingham-Southern | 28,600.00 | | | 1000.00 | 29,600.00 | 4 | 1½ | .. | 5½ | 4000.00 | | | | | 3 | 2100.00 | 2700.00 | | 1½ | 900.00 | 1440.00 | | | |
| Bowdoin | 31,928.00 | 8938.00 | 1018.00 | 733.00 | 42,665.00 | 2½ | 3 | 1 | 6½ | 6686.66 | 4586.66 | 1 | \$1716.00 | | | ½ | 1500.00 | | 3 | 1300.00 | 2400.00 | | | |
| Bryn Mawr | | | | | | 7 | 4 | .. | 12 | | | | | | | | | | | | | | | |
| Coe | 10,940.00 | | | | 10,940.00 | 3 | | .. | 3 | | | | | | | | | | | | | | | |
| Colby | 29,406.00 | 0 | 0 | 0 | 29,406.00 | 3 | 6 | 1 | 10 | 4000.00 | 2500.00 | 1 | 1272.00 | | | | | 1 | 2150.00 | | 6 | 1170.00 | 1200.00 | |
| Colorado | 23,366.00 | | | | 23,366.00 | 4 | 2 | .. | 6 | 3600.00 | 2100.00 | | | 2 | | 2100.00 | | | 2 | 1500.00 | 1800.00 | | | |
| Concordia | 5728.53 | | 10.00 | 3896.54 | 9335.07 | 1½ | | .. | 1½ | 2360.00 | 2300.00 | | | | | | | | | | | | | |
| Connecticut | 55,717.14 | 466.92 | 1006.97 | 506.25 | 57,697.28 | 9 | 4 | .. | 13 | | | | | | | | | | | | | | | |
| Denison | 31,338.00 | 212.55 | 83.50 | 783.78 | 32,417.80 | 5 | 5 | 1 | 11 | 3600.00 | 2713.13 | 1 | 1620.00 | | | | | 3 | 2200.00 | 2400.00 | 5 | 1230.00 | 1800.00 | |
| Dickinson | 20,465.75 | 1865.10 | 625.14 | 1080.76 | 24,036.75 | 4 | 2 | 1 | 7 | | | | | | | | | | | | | | | |
| Earlham | 11,540.00 | | | | 11,540.00 | 2 | 3½ | .. | 5½ | | | | | | | | | | | | | | | |
| Elmira | 11,600.38 | 677.50 | 10.00 | | 12,287.98 | 2½ | | 1 | 3½ | | | | | | | | | | | | | | | |
| Emory and Henry | 3700.00 ¹¹ | | | 146.78 | 3846.78 | 1 | | .. | 1 | 2400.00 | | | | | | | | | | | | | | |
| Fisk | 26,000.00 | | | | 26,000.00 | 8 | 1 | .. | 9 | | | | | | | | | | | | | | | |
| Goucher | 26,142.30 | 902.70 | 26.00 | 225.62 | 27,296.62 | 5 | 4 | .. | 9 | 4140.00 | | | | | | | | | | | | | | |
| Hamilton | 22,028.29 | 7818.44 | 280.40 | 2638.74 | 32,765.87 | 5 | 6½ | .. | 11½ | | | | | | 3 | 2100.00 | 2000.00 | | 6½ | 1200.00 | 1600.00 | | | |
| Haverford | 14,587.65 | 14,357.50 | 699.83 | 619.09 | 30,264.12 | 5½ | 3 | .. | 8½ | | 3000.00 | | | | 4 | 2100.00 | 2300.00 | | 3 | 1000.00 | 2200.00 | | | |
| Hope | 8500.00 | | 42.25 | | 8542.25 | 2 | 2 | .. | 4 | | | | | | | | | | | | | | | |
| Illinois Wesleyan | | | | | | 2 | 1 | 1 | 4 | | | 2100.00 | 1 | 900.00 | | | | | | | | | | |
| James Millikin | 16,050.00 | | | | 16,050.00 | 4 | | .. | 4 | | | | | | | | | | | | | | | |
| Juniata | | | | 303.00 | 17,885.00 | 2 | 3 | .. | 5 | 3600.00 | 2300.00 | | | | | | | | | | | | | |
| Lawrence | 17,582.00 | | | | 17,582.00 | 4 | 2 | .. | 6 | 4500.00 | | | | | 3 | 3137.60 | 3787.41 | | | | | | | |
| Madison | 23,052.14 | | | | 23,052.14 | 4 | 2 | .. | 6 | | | | | | | | | | | | | | | |
| Marietta | 21,110.00 | 3637.17 | | 3000.00 | 27,777.17 | 4 | 2 | .. | 6 | | | | | | | | | | | | | | | |
| Michigan College of Mining and Technology | | | | | | 2 | 3 | .. | 5 | 3100.00 | 2300.00 | | | | | | | | | | | | | |
| Middlebury | | | | | | | | | | | | | | | | | | | | | | | | |
| Mills | 29,314.80 | | 5154.69 | | 34,469.49 | 7½ | 1 | 1 | 9½ | | | | | | | | | | | | | | | |
| Morningside | 15,070.79 | | 360.00 | 2358.66 | 17,789.45 | 2 | 1 | .. | 3 | 2600.00 | 1200.00 | | | | | | | | | | | | | |
| Mount Union | 11,204.67 | 503.46 | 44.11 | 2179.55 | 13,931.79 | 4 | | .. | 4 | 5030.00 ¹² | 2760.00 ⁸ | | | | 2 | 1500.00 ⁵⁻⁶ | 1840.00 ⁶ | | 1 | 1000.00 | | | | |
| New Rochelle | 14,822.76 | | 1133.88 | | 15,956.64 | 4 | 3 | .. | 7 | | | | | | 2 | 1800.00 | 2200.00 | | 3 | 1320.00 ⁵ | 1400.00 | | | |
| Parsons | 9993.30 | | | | 10,276.14 | 3 | 1 | .. | 7 | 3300.00 | 2620.00 | | | 1 | 2100.00 | | | | | | | | | |
| Pomona | | | | | | | | | | | | | | | | | | | | | | | | |
| Randolph-Macon | 20,350.00 | | | | 20,350.00 | 4 | 3½ | .. | 7½ | | | | | | | | | | | | | | | |
| Reed | 23,259.74 | | | 3216.18 | 26,475.92 | 4 | 2 | .. | 6 | 3800.00 ⁷ | | | | | | | | | | | | | | |
| St. Catherine | 13,000.00 | | | 4265.00 ¹³ | 17,265.00 | 4 | | .. | 4 | | | | | | 3 | 2300.00 ⁷ | 2600.00 ⁷ | | 2 | 1600.00 ⁷ | 1800.00 ⁷ | | | |
| Seneca | 15,988.63 | 1196.18 | | | 17,184.81 | 3 | 2½ | .. | 5½ | 3000.00 | 2200.00 | | | 1 | 1800.00 | | | | | | | | | |
| Sweet Briar | 20,460.00 | 0 | 0 | 225.23 | 20,685.23 | 4 | | 1 | 5 | 3500.00 | 2400.00 | 1 | 1350.00 | | | | | | | | | | | |
| Trinity | 17,029.29 | | 100.00 | 699.73 | 17,829.02 | 3 | 3 | .. | 6 | | | | | | 2 | | 1800.00 | | | | | | | |
| Valparaiso | 19,654.39 | | | 808.23 | 27,762.62 | 3 | 1 | .. | 4 | 2733.33 | 2499.93 | | | | 1 | 2400.00 | | | | | | | | |
| Wake Forest | 17,767.50 | 0 | 227.29 | 517.79 | 18,562.08 | 3½ | | ½ | 4½ | 4500.00 | | ½ | 2000.00 | 2 | 2100.00 | 2400.00 | | 1½ | 2000.00 | 2400.00 | 1 | 1800.00 | | |
| Washington and Jefferson | 13,567.27 | 1064.21 | 442.45 | 0 | 15,074.03 | 2 | 1 | .. | 3 | 4116.67 | | | | | | | | | | | | | | |
| Washington and Lee | 25,737.00 | | | | 25,737.00 | 3 | 3½ | 1 | 7½ | | | | 1 | 1500.00 | 2 | 2200.00 | 2640.00 | | | | | | | |
| Wesleyan, Middletown, Conn. | 41,614.82 | 18,385.14 | | | 60,000.00 | 10 | 7 | 1 | 18 | 4000.00 | | | | | 2 | 2100.00 | 2300.00 | | 2 | 2100.00 | 2500.00 | 7 | 1350.00 | 1500.00 |
| Westminster | 17,760.00 | 116.40 | 593.00 | | 18,719.40 | 3 | 3 | .. | 6 | 2900.00 ¹⁴ | | | | | 2 | 2500.00 ¹⁴ | | | | | | | | |
| Willamette | 13,035.00 | | | 230.00 | 13,273.00 | 2 | 1 | .. | 3 | 2700.00 | 2400.00 | | | | | | | | | | | | | |
| Williams | 43,460.89 | | 500.00 | 320.15 | 44,281.04 | 6 | 2 | 1 | 9 | 6300.00 | | | | 1 | 2100.00 | 3 | 2800.00 | 3950.00 | 2 | 2200.00 | 2300.00 | 2 | 1420.00 | 1500.00 |
| Wooster | 19,275.00 | 163.09 | 312.50 | 643.26 | 20,393.85 | 5 | | .. | 5 | | | | | | | | | | | | | | | |
| High | 55,717.14 | 18,385.14 | 5154.69 | 838.23 | 64,413.00 | 10 | 7 | 1 | 18 | 6686.66 | 4586.66 | 1 | 2100.00 | 4 | 3200.00 | 3950.00 | | 6½ | 2600.00 | 2700.00 | 7 | 1800.00 | 2400.00 | |
| Median | 18,521.25 | 1064.21 | 392.00 | 16.37 | 20,539.37 | 4 | 2½ | .. | 5½ | 3550.00 | 2449.99 | 1 | 1620.00 | 2 | 2150.00 | 2800.00 | | 2 | 2150.00 | 2300.00 | 2 | 1320.00 | 1740.00 | |
| Low | 3700.00 | 116.40 | 10.00 | 120.00 | 3846.78 | 1 | ½ | .. | 1 | 2360.00 | 1200.00 | ½ | 900.00 | 1 | 1800.00 | 2400.00 | | ½ | 1500.00 | 1800.00 | 1 | 500.00 | 1100.00 | |

1 Includes summer salary. 2 Plus \$200 bonus. 3 Plus \$100 bonus. 4 Plus 8 per cent bonus. 5 10 months. 6 Plus \$300 bonus. 7 Plus \$150 bonus. 8 Religious services contributed by Sisters. 9 Includes library fees, \$4416. 10 ½ time. 11 \$5 per student. 12 ½ not included in library budget 13 Evaluation of services contributed by Sisters of St. Joseph 14 Salary on Mar. 31, 1948. 15 Salaries as of Jan. 1, 1948, unless otherwise noted.

College and University Library General and Salary Statistics (Group II)

| Library | Student Service Last Fiscal Year | | Hours per Week Required of Each Full-Time Staff Member | | Number of Days Annual Vacation | | Days Allowed with Pay as Holidays | | Sabbatical Leave | Number of Months for Which Salary Is Paid | |
|---|----------------------------------|-------------------------|--|-----------------|--------------------------------|-----------------|-----------------------------------|-----------------|------------------------|---|-----------------|
| | Total Hours per Year | Rate per Hour Min. Max. | Professional | Subprofessional | Professional | Subprofessional | Professional | Subprofessional | | Professional | Subprofessional |
| Agnes Scott..... ¹ | | 50 | | 40 | | | 17 | | | 10 | |
| Albion..... | 4708 | 40 45 | 41 | | 26 | | 4 | | | 12 | |
| Allegheny..... | | | | | | | | | Director | 12 | 12 |
| Amherst..... | 5380 | 50 50 | 39 | 39 | 6.25 | 6.25 | 14 | 14 | 0 | 12 | 9 |
| Augustana..... | 1690 ¹ | 40 40 | 45 | 45 | 18 | | 22 | | 0 | 11 | |
| Baldwin-Wallace..... | | 50 50 | 40 | | 30 | | 24 | | 0 | 9 | |
| Bates..... | | 40 | 40 | | | | 7 | | | 12 | |
| Beloit..... | | 40 50 | 40 | | 28 | | | | | 12 | 12 |
| Birmingham-Southern..... | | 40 60 | 38 | 38 | | | | | Librarian ² | 12 | 12 |
| Bowdoin..... | | 30 60 | 42 | 38½ | 24 | 24 | 6 | 6 | | | |
| Bryn Mawr..... | | | | | | | | | | 12 | |
| Col. | 2384 | 40 40 | 39 | | 36 | | | | | 12 | 12 |
| Colby..... | 500 | 40 50 | 38 | 38 | 28 | 14 | 7 | 7 | 0 | 12 | 12 |
| Colorado..... | | | 39 | | 28 | | 10 | | | 12 | |
| Concordia..... | 3736 | 50 55 | 39 | | 24 | | 8 | | | | |
| Connecticut..... | 4004½ | | | | | | | | | 12 | 10-12 |
| Denison..... | 4533½ | 30 50 | 38½ | 38½ | 26 | | 12½ | 12½ | Librarian Asst. | | |
| Dickinson..... | | | 38½ ⁴ | | 24½ ⁴ | | 15½ | | 0 | 12 | 10 |
| Earlham..... | 6600 | 35 40 | 39 | 39 | 30 | | | | 0 | 12 | 1 |
| Elmira..... | 3051 | 40 40 | 39 | 39 | | | | | | 12 | |
| Emory and Henry..... | 3350 | 30 | 44 | | | | 40 | | | 12 | |
| Fisk..... | 8980 | 35 50 | 40 | | 30 | | 7 | | | 12 | |
| Goucher..... | | | 40 | | 52 | | | | | 12 | |
| Hamilton..... | | | 40 | | 26 | | 9 | | Librarian | 12 | |
| Haverford..... | | 45 60 | 38 | | 26 | | 17 | | Librarian | 12 | |
| Hope..... | 3816 | 50 40 | 40 | 40 | 75 ² | | | | | 9½ | |
| Illinois Wesleyan..... | 4060 | 40 50 | 40 | | 26 | | 23 | | Librarian | 10-12 | |
| James Millikin..... | 3446 | | 50 | 39 | | | | | | | |
| Juanita..... | | | 42 | 42 | 24 | 24 | 6 | 6 | Librarian Asst. | 12 | 12 |
| Lawrence..... | 2400 | 35 40 | 42 | | | | | | | | |
| Madison..... | 7373 | 36 36 | 39 | | 60 | | | | | 9 ⁷ | |
| Marietta..... | | | 40½ | | 30 | | all | | | 12 | |
| Michigan College of Mining and Technology..... | 440 | | 40 | | 12-26 | | 9 | | 0 | 12 | |
| Middlebury..... | | | | | | | | | | | |
| Mills..... | 1745 | 60 75 | 38½ | | 36 | | 5 | | | 12 | |
| Morningside..... | 5000 | 40 50 | 40 | | 28 | | 20 | | | 12 | |
| Mount Union..... | 3220 | 45 60 | 37½ | | 27 | | 15 | | | 12 ⁸ | |
| New Rochelle..... | 16.0 | 35 40 | 37½ | 37½ | | | 20½ | | 0 | 9½ | 9½ |
| Parsons..... | | | 48 | | | | | | | | |
| Pomona..... | | | | | | | | | | | |
| Randolph-Macon..... | 0 | | 38 | | | | | | | 9-12 | |
| Reed..... | | 60 60 | 38 | | 26 | | | | 0 | 12 | |
| St. Catherine..... | 9230 | | 42 | | 31 | | 13 | | | 12 | |
| Seneca..... | 3.22 | 50 65 | 38½ | 38½ | 28 | 28 | 8 | 8 | Librarian | 12 | 12 |
| Sweet Briar..... | | | 39 | | 24-28 | | 10 | | | | |
| Trinity, San Antonio, Tex..... | 8860 | 35 45 | 40 | 40 | 30 | 30 | 18 | 18 | | 12 | 9-12 |
| Valparaiso..... | 8742 | 35 75 | 44 | 20 | 12 | | 21 | | | 12 | 12 |
| Wake Forest..... | 4032 | 43 | 37 | | | | 60 | | 0 | 12 | |
| Washington and Jefferson..... | | | 42 | | 30 | | 10 | | 0 | 12 | |
| Washington and Lee..... | 1200 | 50 50 | 38 | 38 | 28 | 28 | 8 | 8 | Librarian | 12 | 12 |
| Wesleyan, Middletown, Conn..... | 7500 | 50 70 | 39 | | 5 weeks ⁹ | | 10 | | | 12 | |
| Westminster..... | | 40 50 | 40 | | 28 | | | | | 12 | |
| Westminster..... | 595 | 50 50 | 40 | | 30 | | 20 | | 0 | 12 | |
| Williams..... | 3344 ¹ | 60 75 | 39 | 39 | 26 | 26 | 15 | 15 | | 12 | 12 |
| Worcester..... | 6083½ | 45 50 | 39½ | | | | 7-10 | | 0 | 12 | |
| High..... | 9230 | 60 75 | 48 | 45 | 75 | 30 | 60 | 18 | | 12 | 12 |
| Average..... | 4360 | 42.8 52.4 | 39.9 | 38.2 | 29.3 | 22.5 | 14.9 | 10.5 | | 11.7 | 10.7 |
| Median..... | 3910 | 40 50 | 39.5 | | 28 | 25 | 12½ | 8 | | 12 | |
| Low..... | 440 | 30 36 | 37 | 20 | 6 | 6 | 4 | 6 | | 9 | 1 |

1 Not on library budget. 2 Regular college vacations. 3 Not determined. 4 Except librarian. 5 Assistant professor and above at ½ salary every 7 years. 6 By arrangement. 7 Plus summer school. 8 Cataloger, 10 months. 9 After 3 years.

Teachers College and Normal School

| Library | Fiscal Year Ending | Student Enrolment | | Faculty Members | | Graduate Work | Book Stock ³ | Circulation Volumes | |
|--|--------------------|------------------------------|-----------------------------|-------------------|---------------------|-------------------|-------------------------|--------------------------------|----------------------------------|
| | | Regular Session ¹ | Summer Session ² | Regular Session | Summer Session | | | Lent for Home Use ⁴ | Reserved Book Loans ⁵ |
| Alabama, Jacksonville, State Teachers College | 17Ag47 | 985 | 901 | 62 | 40 | No | 20,539 | 17,318 | 39,318 |
| Arizona, Flagstaff, State College | 30Je47 | 653 | 553 | 38 | 44 | Yes | 31,215 | 35,980 | 14,907 |
| Georgia, Collegeboro, Teachers College | 30Je47 | 606 | 580 | 46 | 45 | No | 36,165 | 24,388 | 24,938 |
| Illinois, Charleston, Eastern Illinois State College | 31My47 | 1367 | 668 | 123 | 68 | No | 66,146 | 46,316 | 64,207 |
| Illinois, DeKalb, Northern Illinois State College | 30Je47 | 1442 | 658 | 86 | 51 | No | 64,925 | 45,969 | 49,415 ¹⁸ |
| Iowa, Cedar Falls, State Teachers College | 30Je47 | 2469 | 2452 | 193 | 145 | Yes | 143,635 | 58,066 | 129,499 |
| Kansas, Emporia, State Teachers College | 30Je47 | 1153 | 1095 | 133 | 133 | Yes | 93,578 | | |
| Kansas, Pittsburg, State Teachers College | 30Je47 | 1753 | 1459 | 127 | 127 | Yes | 74,560 | 21,303 | 32,217 |
| Kentucky, Bowling Green, Western Kentucky Teachers College | 16Ag47 | 1817 | 1564 ⁷ | 99 | 101 | Yes | 76,454 | 31,390 | 92,036 |
| Kentucky, Murray, Murray State Teachers College | 30Je47 | 1487 | 633 | 98 | 91 | Yes | 38,324 | 40,513 | 12,537 |
| Maryland, Frostburg, State Teachers College | 30Je47 | 238 | 125 | 23 ¹ | 11 ¹ | No | 19,270 | 24,138 | 13,501 |
| Maryland, Towson, State Teachers College | 30Je47 | 455 | 100 | 40 | 12 | No | 36,679 | 50,611 | 3709 ¹⁹ |
| Michigan, Kalamazoo, Western Michigan College of Education | 30Je47 | 4465 | 1557 | 250 | 250 | Yes | 67,200 | 38,520 ¹⁷ | 53,518 |
| Minnesota, Bemidji, State Teachers College | 30Je47 | 575 | 292 | 56 | 23 ^{9a} | No | 23,636 | 22,131 | 19,358 |
| Minnesota, Mankato, State Teachers College | 11Jl47 | 974 | 598 ^{8b} | 55 ¹¹ | 38 ^{9c} | No | 29,721 | 27,520 | 61,964 |
| Minnesota, Moorhead, State Teachers College | 30Je47 | 666 | 337 | 58 | 36 | No | 25,402 | 19,301 | 31,064 |
| Minnesota, Winona, State Teachers College | 30Je47 | 561 ^{2a} | 274 ^{9d-12b} | 50 ^{12c} | 15 ^{9e} | No | 34,255 | 24,025 | 26,679 |
| Mississippi, Cleveland, Delta State Teachers College | 30Je47 | 483 | 449 | 45 | 37 | No | 18,205 | 18,837 | 5929 ¹⁹ |
| Missouri, Cape Girardeau, Southeast Missouri State College | 30Ap47 | 1288 | 945 | 77 | 83 | No | 88,744 | 19,382 | |
| Missouri, Warrensburg, Central Missouri State College | 30Je47 | 931 | 1213 | 60 | 71 | Yes ¹⁰ | 74,106 | 42,549 | 42,549 |
| Nebraska, Kearney, State Teachers College | 30Je47 | 663 | 769 | 58 | 60 | Yes | 43,486 | | |
| Nebraska, Peru, State Teachers College | 30Je47 | 292 | 439 | 46 | | Yes | 53,409 | 26,268 | |
| New Hampshire, Keene, Teachers College | 1946-47 | 416 | 238 | 48 | 26 | No | 26,058 | 9390 | 16,538 |
| New York, Albany, State College for Teachers | 31Mr47 | 1318 | 819 | 115 | 45 | Yes | 46,098 | 37,950 | 36,627 |
| New York, Geneseo, State Teachers College | 31Mr47 | 454 | 235 | 56 | 17 | No | 34,738 | 25,451 | 3200 ¹⁹ |
| North Carolina, Greenville, East Carolina Teachers Coll.ge | 30Je47 | 1222 | | 89 | | Yes | 61,256 | 34,162 | 36,841 |
| North Carolina, Minot, State Teachers College | 30Je47 | 614 | 515 ^f | 50 | 46 | Yes | 29,549 | 23,935 | 34,065 |
| North Dakota, Valley City, State Teachers College | 30Je47 | 335 | 485 | 48 | 48 | No | 36,686 | 13,417 | 1249 ¹⁹ |
| Oklahoma, Alva, Northwestern State College | 30Je47 | 559 | 221 | 34 | 34 | No | 24,762 | 5978 | 1048 ¹⁹ |
| Oregon, Ashland, Southern Oregon College of Education | 30Je47 | 493 | 210 ^{9g} | 36 | 22 ^{9h} | No | 20,358 | 43,085 | 14,318 |
| Oregon, LaGrande, Eastern Oregon College of Education | 30Je47 | 623 | 223 ⁹ⁱ | 39 | 18 | No | 25,482 | 30,048 | 20,617 |
| Oregon, Monmouth, College of Education | 30Je47 | 468 | 598 | 28 ¹ | 24 ¹ | No | 42,605 ¹⁵ | 32,654 | 30,459 |
| Pennsylvania, West Chester, State Teachers College | 31My47 | 1612 | 740 ^{9a} | 94 ^{9b} | 52 ^{9c} | No | 47,983 | 44,265 | 19,972 ¹⁹ |
| South Dakota, Aberdeen, Northern State Teachers College | 30Je47 | 662 | 777 | 45 | 43 | No | 29,876 | 15,553 | 5560 ¹⁹ |
| South Dakota, Spearfish, Black Hills Teachers College | 30Je47 | 286 | 413 ^{9j-14} | 31 | 32 ^{9k-14} | No | 24,448 | 13,860 | 22,586 |
| Texas, Commerce, East Texas State Teachers College | 31Ag47 | 1656 | 2540 | 103 | 105 | Yes | 92,106 | 26,778 | 63,042 |
| Texas, Denton, North Texas State Teachers College | 31Ag47 | 3803 | 3491 | 230 | 190 | Yes | 175,787 | 132,370 | 9727 ¹⁹ |
| Texas, Huntsville, Sam Houston State Teachers College | 31Ag47 | 1821 | 1613 | 114 | 88 | Yes | 81,110 | 63,937 | 47,335 |
| Virginia, Farmville, State Teachers College | 30Je47 | 883 | 372 | 62 | 36 | No | 50,084 | 22,500 | |
| Wisconsin, Milwaukee, State Teachers College | 31Ag47 | 1714 | 1492 | 112 | 85 | Yes | 75,882 | 51,178 | 48,592 |
| Wisconsin, Oshkosh, State Teachers College | 30Je47 | 894 | 572 | 59 | 42 | Yes | 38,682 | 18,318 | 56,045 |
| High | | 4465 | 3491 | 250 | 250 | ... | 175,787 | 132,370 | 129,499 |
| Median | | 883 | 589 | 58 | 45 | ... | 38,682 | 26,778 | 25,808 ¹ |
| Low | | 238 | 100 | 28 ¹ | 11 ¹ | ... | 18,205 | 9390 | 1048 |

1 As of third week, fall term, 1946; includes graduate students. 2 Includes graduate students. 3 Includes volumes in all agencies. 4 Excludes overnight loans and all loans of reserved books except where the contrary is indicated by footnote. 5 Includes overnight loans, except where the contrary is indicated by footnote. 6 Excludes capital outlay and auxiliary enterprises such as dormitory, athletics, etc. 7 Approximate number. 8a-k Figure given here is for 1st session; if 2 sessions, 2nd session had (a) 12; (b) 317; (c) 28; (d) 117; (e) 6; (f) 609; (g) 97; (h) 17; (i) 128; (j) 210; (k) 20. 9a Figure given here is for regular summer session; pre-session, 524; post-session, 413. 9b Figure given here is for 2nd semester; 1st semester, 89. 9c Figure given here is for regular summer session; pre-session, 35; post-session, 29. 10 In summer session only. 11 Excludes 3 part-time faculty members. 12a-c

Library General and Salary Statistics

| Library Operating Expenditures Last Fiscal Year | | | | | | | | | Total College or Normal School Ex- penditures Last Fiscal Year ⁶ |
|---|---------------------|-----------|---------------------|-----------------------------|-------------------------|---------------------|-----------------------|------------|---|
| Staff Salaries | Student Service | Books | Periodicals | Binding and Rebinding | Equip- ment | Supplies | Other | Total | |
| \$ 3500.00 | \$1424.16 | \$2445.18 | \$ 840.38 | \$ 63.05 | \$..... | \$ 287.40 | \$..... | \$ 8560.17 | \$ 269,643.68 |
| 3740.92 | 383.62 | 1796.10 | 663.45 | 761.59 | | 124.05 | 5.00 | 7474.73 | ¹³ |
| 5875.00 | 2112.00 | 2256.00 | ²² | 503.00 | | 236.00 | 250.00 | 11,232.00 | 116,911.00 |
| 19,416.25 | 4742.13 | 3352.63 | 1520.32 | 1393.86 | | 1221.52 | | 31,646.71 | 711,463.04 |
| 16,707.46 | 2297.65 | 5414.55 | 1109.84 | 1000.00 | | | 526.54 | 27,056.04 | 768,257.00 |
| 21,298.56 | 7212.25 | 8620.72 | 2896.66 | 1064.93 | | 1560.42 | | 42,653.54 | ¹³ |
| 24,661.00 | 5895.00 | 3662.00 | 2390.00 | 539.00 | 378.00 | 425.00 | 123.00 | 38,073.00 | 688,198.00 |
| 10,687.63 | 5321.91 | 4882.85 | 2837.97 | 1446.98 | 15,785.08 ²⁴ | 650.87 | | 41,623.29 | 618,942.00 |
| 19,420.75 | 5941.55 | 1352.73 | 640.04 | 227.80 | 233.12 ²⁵ | | | 27,582.87 | 459,715.00 ¹⁷ |
| 8592.13 | 1822.20 | 9452.87 | ²³ | 214.30 | | 225.41 | | 20,306.91 | ¹³ |
| 6096.66 | 240.96 | 772.59 | 555.56 | 47.61 | 222.00 | 88.33 | 23.62 | 8047.33 | 115,622.00 |
| 9665.80 | 470.25 | 1408.27 | 600.00 | 31.43 | | 133.61 | | 12,309.36 | 235,671.00 |
| 26,090.00 | 6081.60 | 7704.00 | 1694.85 | 1028.94 | 470.82 | 1281.33 | | 44,351.54 | 1,393,069.00 |
| 8320.48 | 765.00 | 2698.67 | 735.16 | 635.59 | | 104.00 | | 13,258.90 | 189,555.00 |
| 7874.20 | 1242.61 | 1976.32 | 601.23 | 377.03 | | 272.98 | | 12,344.37 | 353,258.09 |
| 6775.00 | 1739.27 | 2065.91 | 668.93 | 244.75 | | 465.42 | | 11,959.28 | 323,649.43 |
| 5828.56 | 1649.18 | 2196.22 | 941.55 | 381.53 | | 131.17 ⁷ | 125.00 ⁷ | 11,253.21 | 169,947.00 ²⁸ |
| 5700.00 | 1370.00 | 3373.51 | 875.46 | 1074.43 | | 83.24 | 602.97 ²⁸ | 13,079.61 | 157,591.42 |
| 13,024.00 | 2228.00 | 3538.37 | 946.37 | 434.00 | 14.01 | 470.34 | 181.54 | 20,736.63 | 677,376.00 |
| 11,570.00 | 3069.00 | 2746.00 | 1355.00 | 375.00 | | 326.00 | | 19,441.00 | 500,305.00 |
| 5934.71 | 2470.86 | 2125.04 | 805.89 | 484.00 | | 105.04 | | 11,925.54 | 295,044.94 |
| 4735.16 | 691.60 | 2145.00 | 573.95 | 376.53 | | 75.45 | 3197.93 ²⁸ | 11,795.67 | 248,563.66 |
| 3648.75 | 143.10 | 4322.29 | 350.49 | 25.00 | | 50.00 | 50.00 | 8589.63 | ¹³ |
| 24,538.56 | 214.00 | 4004.10 | 1069.69 | 1024.37 | 368.40 | 337.47 | 19.37 | 31,575.96 | 691,356.26 |
| 9450.00 | ²⁹ | 1500.00 | 500.00 | 515.00 | | 195.07 | | 12,160.07 | ¹³ |
| 10,751.07 | 3441.25 | 7635.99 | 843.65 | 1001.12 | 230.44 | 620.68 | | 24,524.20 | 383,867.49 |
| 5300.00 | 1420.00 | 2107.40 | 689.34 | 260.37 | | 303.58 | | 9777.15 | 307,732.00 |
| 6465.00 | ²¹ | 2109.41 | 785.45 | ³⁰ | | 138.93 | | 9498.79 | ¹³ |
| 2740.00 | 1211.00 | 3080.63 | 506.47 | 1995.97 | | 344.13 | | 9878.20 | 187,087.65 |
| 5305.45 | 513.15 | 1823.78 | 598.22 | 530.42 | 154.27 | 269.64 | 188.50 | 9383.43 | 137,214.17 |
| 5550.10 | 1271.11 | 2304.74 | 784.16 | 1138.39 | 345.34 | 288.22 | 251.61 | 11,933.67 | 188,000.00 |
| 3859.40 | 1855.53 | 1706.63 | 576.00 | 229.20 | 27.60 | 226.75 | 169.94 | 8651.05 | 171,276.76 |
| 13,811.67 | 2240.70 | 4284.95 | 1306.06 | 250.00 | 190.00 | 249.25 | | 22,332.63 | 880,127.00 |
| 4200.00 | 1833.00 | 1721.00 | 780.00 | 288.00 | 1600.00 | 75.00 | 18.00 | 10,515.00 | 324,113.00 |
| 2087.50 | 2023.39 | 1215.61 | 128.41 | 286.39 | 121.75 | | 11.00 | 5874.05 | ¹³ |
| 12,974.74 | 5481.56 | 2898.34 | 946.60 | ²³ | ²³ | 1678.97 | | 23,980.22 | 605,983.49 |
| 34,431.08 | 20,471.35 | 21,055.44 | 3072.35 | 2118.22 | 1296.17 | | 3063.21 ²⁷ | 85,507.82 | ¹³ |
| 19,000.00 | 4304.00 | 2500.00 | 894.00 | 154.00 | | 289.00 | 268.00 | 27,409.00 | 793,303.28 |
| 9772.16 | 2946.53 | 2340.80 | 1674.88 | 680.90 | | 245.87 | | 17,661.14 | 550,975.00 |
| 16,600.00 | 500.00 | 5700.00 | 650.00 | ²² | | 200.00 | | 23,650.00 | 495,704.00 |
| 8060.00 | 582.89 | 8557.00 | 514.10 | | | 120.36 | | 17,834.35 | 278,895.00 |
| 34,431.08 | 20,471.35 | 21,055.44 | 3072.35 | 2118.22 | 15,785.08 | 1678.97 | 3197.98 | 85,507.82 | 1,393,069.00 |
| 8320.48 | 1833.00 | 2500.00 | 785.45 | 484.00 | 233.12 | 245.87 | 175.74 | 13,069.61 | 343,113.00 |
| 2087.50 | 143.10 | 772.59 | 128.41 | 25.00 | 14.01 | 50.00 | 5.00 | 5874.05 | 115,622.00 |

Excludes students and faculty engaged in in-service education; number engaged in in-service education is (a) 54; (b) 49; (c) 3. **13** Not reported. **14** Figures for 1947 summer session. **15** Includes statistics for records and music for choir and orchestra. **16** No record kept. **17** Circulation figures for September to June only. **18** Use in building only. **19** Overnight use only. **20** Not kept separately from records of volumes lent for home use. **21** Not paid from library funds. **22** Included with expenditures for books. **23** Included with expenditures for supplies. **24** Includes new stacks. **25** Bought from fines. **26** Includes expense for maintenance. **27** Includes expenditures for supplies. **28** Excludes \$70,000 veterans' tuition. **29** Not counted in computing median. **30** Included with expenditures for periodicals.

Teachers College and Normal School

| Library | Library Income Last Fiscal Year | | | Number of Employees in Full-Time Equivalent | | | Number of Employees in Full-Time Equivalent | |
|---|------------------------------------|----------------------|--------------------|---|-------------------|-------------------------|---|-----------------|
| | Allocation from Institution Budget | Other ⁴ | Total | Profes- sional | Subpro- fessional | Office Admin. or Assts. | Clerical and Others | Total |
| Alabama, Jacksonville, State Teachers College..... | ¹ | ¹ | ¹ | 2 | .. | .. | .. | 2 |
| Arizona, Flagstaff, State College ^{2,b} | \$ 7474.73 | \$ 2551.00 | \$10,025.73 | 2 | .. | .. | .. | 2 |
| Georgia, Collegeboro, Teachers College ²⁰ | 12,600.00 | | 12,600.00 | 2 | .. | .. | .. | 2½ |
| Illinois, Charleston, Eastern Illinois State College..... | 31,646.71 | | 31,646.71 | 6 | .. | .. | .. | 6 |
| Illinois, DeKalb, Northern Illinois State College..... | 16,610.74 | 77.50 | 16,688.24 | 6 | .. | .. | 1 | 7 |
| Iowa, Cedar Falls, State Teachers College ^{20c} | 47,130.00 | | 47,130.00 | 7½ | .. | .. | 1 | 8½ |
| Kansas, Emporia, State Teachers College..... | ² | 356.00 | ² | 7 | .. | 1 | .. | 8½ |
| Kansas, Pittsburg, State Teachers College ^{2,b} | 19,789.05 ³ | 23,431.60 | 46,220.65 | 4 | .. | .. | .. | 4 ⁷ |
| Kentucky, Bowling Green, Western Kentucky Teachers College..... | 27,582.87 | | 27,582.87 | 8 | 1 | .. | 1 | 10 |
| Kentucky, Murray, Murray State Teachers College ^{2,b} | 20,306.91 | | 20,306.91 | 3 | .. | 1 | .. | 4 |
| Maryland, Frostburg, State Teachers College..... | 7783.24 | 264.09 | 8047.33 | 1 | 1 | .. | .. | 2 |
| Maryland, Towson, State Teachers College ^{2,b} | 12,309.36 | 233.03 | 12,542.39 | 4 | .. | .. | 1 | 5 |
| Michigan, Kalamazoo, Western Michigan College of Education ^{2,b} | 38,157.88 | 6193.66 | 44,351.54 | 8 | 2 | 1 | 1 | 12 |
| Minnesota, Bemidji, State Teachers College ^{20b} | ¹ | ¹ | ¹ | 2 | 1 | .. | .. | 3 |
| Minnesota, Mankato, State Teachers College..... | ¹ | 336.35 | ¹ | 2 | 1 | .. | .. | 3 |
| Minnesota, Moorhead, State Teachers College..... | 11,959.28 | | 11,959.28 | 3 | .. | .. | .. | 3 |
| Minnesota, Winona, State Teachers College..... | 11,253.21 | 112.65 | 11,365.86 | 2 | .. | .. | .. | 2 |
| Mississippi, Cleveland, Delta State Teachers College..... | 9242.00 | 4248.61 | 13,490.61 | 2 | .. | .. | .. | 2 |
| Missouri, Cape Girardeau, Southeast Missouri State College..... | 20,168.00 | 568.73 | 20,736.63 | 5½ | .. | .. | .. | 5½ ⁹ |
| Missouri, Warrensburg, Central Missouri State College..... | 19,066.00 | 375.00 | 19,441.00 | 3 | 2 | .. | 1 | 6 |
| Nebraska, Kearney, State Teachers College ^{2,b} | 3345.00 | 1543.93 ^a | 4888.93 | 2 | .. | .. | .. | 2 |
| Nebraska, Peru, State Teachers College..... | 9356.00 | 1923.19 ^b | 11,284.19 | 2 | .. | .. | .. | 2 |
| New Hampshire, Keene, Teachers College ^{2,d} | ¹ | 174.70 | ¹ | 2 | .. | .. | .. | 2 |
| New York, Albany, State College for Teachers..... | 31,575.96 | 17,315 ^c | 31,593.27 | 6½ | 1 | .. | ½ | 8½ |
| New York, Geneseo, State Teachers College..... | 2000.00 | | 2000.00 | 2½ | .. | .. | ½ | 3 |
| North Carolina, Greenville, East Carolina Teachers College..... | 24,524.00 | | 24,524.00 | 4 | 1 | .. | .. | 5 |
| North Dakota, Minot, State Teachers College ^{2,a} | 9104.50 | 672.65 | 9777.15 | 2 | .. | .. | .. | 2 |
| North Dakota, Valley City, State Teachers College..... | ¹ | ¹ | ¹ | 2 | 1 | .. | .. | 3 |
| Oklahoma, Alva, Northwestern State College ^{20b} | 6594.06 | ^{sd} | 6594.06 | 1 | .. | .. | .. | 1 |
| Oregon, Ashland, Southern Oregon College of Education ^{2,b} | 9104.45 | 34.95 ^{se} | 9139.40 | 1 | 1 | .. | .. | 2 |
| Oregon, LaGrande, Eastern Oregon College of Education..... | 10,799.60 | ^{sf} | 10,799.60 | 2 | .. | .. | .. | 2 |
| Oregon, Monmouth, College of Education..... | 8472.99 | ^{sg} | 8472.99 | 2 | .. | .. | .. | 2 |
| Pennsylvania, West Chester, State Teachers College..... | ¹ | ¹ | ¹ | 3 | .. | .. | 1 | 4 |
| South Dakota, Aberdeen, Northern State Teachers College..... | 3600.00 | 5271.00 ^h | 8871.00 | 1 | 1 | .. | .. | 2 |
| South Dakota, Spearfish, Black Hills Teachers College ^{2,b} | ¹ | 2820.10 ⁱ | ¹ | 1 | .. | .. | .. | 1 |
| Texas, Commerce, East Texas State Teachers College ^{2,d} | 23,980.22 | | 23,980.22 | 5½ | .. | .. | .. | 5½ |
| Texas, Denton, North Texas State Teachers College..... | 83,212.57 | 2295.25 | 85,507.82 | 14 | .. | .. | .. | 14 |
| Texas, Huntsville, Sam Houston State Teachers College ^{20e} | 27,409.00 | | 27,409.00 | 4 | .. | .. | 1 | 5 |
| Virginia, Farmville, State Teachers College..... | 17,661.14 | | 17,661.14 | 3 | .. | .. | 1½ | 4½ |
| Wisconsin, Milwaukee, State Teachers College ^{2,d} | 23,650.00 | | 23,650.00 | 5 | .. | .. | 1 | 6 |
| Wisconsin, Oshkosh, State Teachers College ^{20b} | 18,444.00 | | 18,444.00 | 2 | 1 | .. | .. | 3 |
| High..... | 83,212.57 | 23,431.60 | 85,507.82 | 14 | 2 | 1 | 3 | 14 |
| Median..... | 16,610.74 | 672.65 | 16,688.24 | 2½ | 1 | 1 | 1 | 3 |
| Low..... | 2000.00 | 38.09 | 2000.00 | 1 | ½ | 1 | ½ | 1 |

1 Not reported. 2 No separate budget for library. 3 Library is not budgeted. Salaries are approved by State Board and supplies are purchased on recommendation of librarian. 4 Excludes fines and petty cash receipts if not retained by library. 5a-1 Excludes balance from previous year; when such balance exists, amount was (a) 3214.92; (b) 1555.60; (c) 20.78; (d) 3284.14; (e) 608.23; (f) 1134.07; (g) 504.76; (h) 3548.00; (i) 27.55. 6 Excludes 2 additional persons who give full time to teaching in library school. 7 Excludes 1 part-time summer employee. 8 Includes one staff member on leave. 9a-1 Excludes additional summer salary; when summer salary is additional, amount is (a) Approx. ½ annual salary; (b) 423.57; (c) 414.28; (d) 500.00; (e) 200.00 for 3 weeks in summer; (f) 689.64; (g) 400.00; (h) 1100.00; (i) 880.00. 10 Figures not reported. Librarian died April 1947. 11 Librarian

Library General and Salary Statistics

| | | Salaries ²⁰ | | | | | | | | | | | | | | | | |
|-------------------------------|--|------------------------|--------|-----------|---|--------------------|--------------------|--|--------------------|--------|-------------------------|------|----------------------------------|---------|------|--|---------|---------|
| Chief Librarian ¹⁸ | Associate or Assistant Chief Librarian ¹⁸ | Department Heads | | | Professional Assistants All Departments ²¹ | | | School, College, and Departmental Libraries Central Library Budget Department Head | | | Professional Assistants | | Sub-Professional All Departments | | | Clerical, Administrative Assistants and Others All Departments | | |
| | | No. | Min. | Max. | No. | Min. ¹⁸ | Max. ¹⁸ | No. | Min. | Max. | No. | Min. | No. | Min. | Max. | No. | Min. | Max. |
| \$3300 | \$2000 | .. | .. | .. | .. | .. | .. | .. | .. | .. | .. | .. | .. | .. | .. | .. | .. | .. |
| 2700 | .. | .. | .. | .. | .. | .. | .. | 1 | \$3018 | .. | .. | 1 | \$2400 | .. | .. | .. | .. | .. |
| 5390 | .. | 3 | \$3575 | \$3740.00 | .. | .. | .. | 1 | 2400 | .. | .. | .. | .. | .. | .. | .. | .. | .. |
| 4400 | .. | .. | .. | .. | .. | .. | .. | 2 | 3575 | \$3740 | .. | .. | .. | .. | .. | .. | .. | .. |
| 3550 | .. | 6 | 2700 | 2800.00 | .. | .. | .. | .. | .. | .. | .. | 1 | 3685 | .. | .. | .. | .. | 1 |
| 3600 | .. | 6 | 2340 | 2560.00 | .. | .. | .. | .. | .. | .. | .. | .. | .. | .. | .. | .. | .. | .. |
| .. | .. | 3 | .. | .. | .. | .. | .. | 3 | 2550 | 3100 | .. | .. | .. | .. | .. | .. | .. | .. |
| .. | .. | .. | .. | .. | .. | .. | .. | 1 ¹³ | .. | .. | .. | 1 | .. | .. | .. | .. | .. | .. |
| 3500 | .. | 2 | 2820 | 3000.00 | .. | .. | .. | .. | .. | .. | .. | .. | .. | .. | .. | .. | .. | 1 |
| 3500 | .. | .. | .. | .. | .. | .. | .. | .. | .. | .. | .. | 1 | 2750.00 | .. | .. | .. | .. | 1 |
| 4500 | .. | .. | .. | .. | .. | .. | .. | 3 | 2310 | 2750 | .. | .. | .. | .. | .. | .. | .. | 1 |
| .. | .. | .. | .. | .. | .. | .. | .. | 7 | 2300 | 2800 | .. | .. | .. | .. | 2 | 1560.00 | 1720 | 2 |
| 3300 ^{9a} | 3200 ^{9a} | .. | .. | .. | .. | .. | .. | .. | .. | .. | .. | 1 | 2000.00 | .. | .. | .. | .. | .. |
| 3300 ^{9a} | .. | .. | .. | .. | .. | .. | .. | 2 | 2600 ^{9a} | .. | .. | .. | .. | .. | 1 | 1260.09 | .. | .. |
| 3100 ^{9b} | 3000 ^{9c} | .. | .. | .. | .. | .. | .. | .. | .. | .. | .. | .. | .. | .. | .. | .. | .. | .. |
| 3300 ^{9d} | 2400 ^{9d} | .. | .. | .. | .. | .. | .. | .. | .. | .. | .. | .. | .. | .. | .. | .. | .. | .. |
| 4392 | 4248 ¹¹ | .. | .. | .. | .. | .. | .. | 3½ | 1998 | 2760 | .. | .. | .. | .. | .. | .. | .. | .. |
| 3600 | .. | .. | .. | .. | .. | .. | .. | 2 | 2820 | 3420 | .. | .. | .. | .. | 2 | 1250.00 | 2400 | 1 |
| 2900 | 2700 | .. | .. | .. | .. | .. | .. | .. | .. | .. | .. | .. | .. | .. | .. | .. | .. | .. |
| 2940 | 2700 | .. | .. | .. | .. | .. | .. | .. | .. | .. | .. | .. | .. | .. | .. | .. | .. | .. |
| 2055 ^{9e} | 2055 ^{9e} | .. | .. | .. | .. | .. | .. | .. | .. | .. | .. | .. | .. | .. | 1 | 120.00 ^{16,19} | .. | .. |
| 4560 | 3540 | .. | .. | .. | .. | .. | .. | 4 | 2400 ¹⁴ | 3009 | .. | .. | .. | .. | 1 | 2016.00 | .. | .. |
| 4560 | 3560 ^{12a} | .. | .. | .. | .. | .. | .. | .. | .. | .. | .. | .. | .. | .. | .. | .. | .. | .. |
| 4320 | .. | .. | .. | .. | .. | .. | .. | 3 | 2760 | 3240 | .. | .. | .. | .. | 1 | 1350.00 | .. | .. |
| 2820 | 2520 | .. | .. | .. | .. | .. | .. | .. | .. | .. | .. | .. | .. | .. | .. | .. | .. | .. |
| 2400 | .. | .. | .. | .. | .. | .. | .. | .. | .. | .. | .. | .. | .. | .. | .. | .. | .. | .. |
| 3300 | .. | .. | .. | .. | .. | .. | .. | .. | .. | .. | .. | .. | .. | .. | .. | .. | .. | .. |
| 3800 | 2800 | .. | .. | .. | .. | .. | .. | .. | .. | .. | .. | .. | .. | .. | .. | .. | .. | .. |
| 3800 | 3000 | .. | .. | .. | .. | .. | .. | .. | .. | .. | .. | .. | .. | .. | .. | .. | .. | .. |
| 4138 ^{9f} | 3934 ^{9f-12b} | .. | .. | .. | .. | .. | .. | .. | .. | .. | .. | .. | .. | .. | .. | .. | .. | .. |
| 2400 | .. | .. | .. | .. | .. | .. | .. | .. | .. | .. | .. | .. | .. | .. | .. | .. | .. | .. |
| .. | .. | .. | .. | .. | .. | .. | .. | .. | .. | .. | .. | .. | .. | .. | .. | .. | .. | .. |
| 3150 | .. | 4½ | 2310 | .. | .. | .. | .. | .. | .. | .. | .. | .. | .. | .. | .. | .. | .. | .. |
| .. | .. | 5 | 3200 | .. | .. | .. | .. | .. | .. | .. | .. | .. | .. | .. | .. | .. | .. | .. |
| 3300 ^{9h} | 2640 ^{9l} | .. | .. | .. | .. | .. | .. | 5 | 2700 | 3200 | 1 | 3600 | .. | .. | .. | .. | .. | .. |
| 3840 | .. | 2 | 2160 | 2563.00 | .. | .. | .. | 2 | 1800 | .. | .. | .. | .. | .. | .. | .. | .. | .. |
| 3700 | .. | .. | .. | .. | .. | .. | .. | 3 | 2630 | 3300 | 1 | 2900 | .. | .. | .. | .. | .. | .. |
| 3500 | .. | .. | .. | .. | .. | .. | .. | 1 | 2400 | .. | .. | .. | .. | .. | .. | .. | .. | .. |
| .. | .. | .. | .. | .. | .. | .. | .. | .. | .. | .. | .. | .. | .. | .. | .. | .. | .. | .. |
| 5390 | 3984 | 6 | 3575 | 3740.00 | 7 | 3176 | 3685 | 2 | 3600 | 3740 | 1 | 3685 | 2 | 2750.00 | 2400 | 2 | 2160.00 | 1500.00 |
| 3500 | 2900 | 3½ | 2520 | 2681.50 | 3 | 2550 | 3150 | 1 | 2900 | .. | 1 | 2400 | 1 | 1800.00 | .. | 1 | 1500.00 | 1395.00 |
| 2055 | 2000 | 2 | 2000 | 2100.00 | ½ | 1200 | 2750 | ½ | 1512 | 3740 | 1 | 1800 | ½ | 900.00 | 1720 | ½ | 700.00 | 1290.00 |

emerita—half-time. 12a 2 assistant librarians; figure given is maximum; minimum is \$2928.00. 12b 2 assistant librarians; figure given is maximum; minimum is \$3676.00. 13 Teacher of library science. 14 Salary for 12 months. 15 ½ this amount for half-time service. 16 Salary for 3 weeks summer work. 17a Figure given is for additional clerical work in summer. 17b \$120 additional for clerical work in summer. 18 Additional summer salary not included when computing median if summer salary is separate from salary total given. 19 Not counted in computing median. 20 Figures as of Jan. 1, 1948, except when indicated by footnote. 20a-e (a) Figures as of Jan. 1947; (b) As of June 1947; (c) As of July 1947; (d) As of Aug. 1947; (e) As of September 1947. 21 Central library only. 22 Confidential. 23 3 part-time employees.

Teachers College and Normal School Library General and Salary Statistics

| Library | Student Service Last Fiscal Year | | Number of Months for Which Salary Is Paid | | Hours per Week Required of Each Full-Time Staff Member | | Number of Days Allowed with Pay as: | | Sabbatical Leave | | | |
|--|----------------------------------|---------------|---|-------------------------------|--|-------------------------------|-------------------------------------|-------------------------------|------------------|-----------------|----------------|------------------------------|
| | Total Hours for Year | Rate per Hour | Professional | Sub-professional and Clerical | Professional | Sub-professional and Clerical | Professional | Sub-professional and Clerical | | | | |
| Alabama, Jacksonville, State Teachers College..... | 3677½ | \$.25 | \$.40 | 12 | .. | 40 | .. | 0 | 0 | .. | .. | None |
| Arizona, Flagstaff, State College ^{1b} | 767½ | .. | .. | .. | .. | .. | .. | 20 | .. | .. | .. | None ² |
| Georgia, Collegeboro, Teachers College ^{1b} | 7040 | .30 | .30 | 12 | .. | 40 | .. | None | .. | .. | .. | None |
| Illinois, Charleston, Eastern Illinois State College..... | 11,264 | .40 | .50 | 11 | .. | 39 | .. | None | .. | 24-26 | .. | Professional ¹¹ |
| Illinois, DeKalb, Northern Illinois State College..... | .. | .50 | .. | 11 | 11 | .. | 20 | None | .. | .. | .. | Professional ¹¹ |
| Iowa, Cedar Falls, State Teachers College ^{1c} | 18,213 | .40 | .45 | 12 | 12 | 36 | 44 | 26 | 12 | 10½ | 6 | None |
| Kansas, Emporia, State Teachers College..... | 16,342 | .35 | .50 | 11 | 12 | 40 | 44 | 27 | 12 | 20 | 8 | Professional |
| Kansas, Pittsburg, State Teachers College ^{1b} | 1330½ | .. | .. | 12 | .. | 44 ^{7a} | .. | 12 | .. | 5 | .. | Professional ¹² |
| Kentucky, Bowling Green, Western Kentucky Teachers College..... | 6500 ³ | .. | .. | 12 | 12 | 40 | 40 | 31 | 31 | 7 ² | 7 ² | None |
| Kentucky, Murray, Murray State Teachers College ^{1b} | 6074 | .30 | .30 | 12 | 12 | 40 ^{7b} | 40 ^{7b} | .. | .. | .. | .. | .. |
| Maryland, Frostburg, State Teachers College..... | 602.4 | .50 | .50 | 12 | 12 | 40 | 40 | 15 | 15 | 23 | 23 | None |
| Maryland, Towson, State Teachers College ^{1d} | 1000 | .50 | .. | 12 | .. | 40 ^{7c} | .. | .. | .. | .. | .. | .. |
| Michigan, Kalamazoo, Western Michigan College of Education ^{1b} | 12,163 | .50 | .50 | 10 ^a | 12 | 35 ^{7d} | 35 ^{7d} | 50 ³ | .. | .. | 10 | None |
| Minnesota, Bemidji, State Teachers College ^{1b} | 1530 | .50 | .50 | 9 | 9 | 40 ^{7e} | 40 ^{7e} | .. | .. | .. | .. | All staff ¹³ |
| Minnesota, Mankato, State Teachers College..... | 2505 | .45 | .45 | 9 ^{5b} | 9 ^{5b} | .. | .. | None | .. | .. | .. | Professional ¹⁴ |
| Minnesota, Moorhead, State Teachers College..... | 10 | .45 | .45 | .. | .. | 38 | .. | .. | .. | .. | .. | .. |
| Minnesota, Winona, State Teachers College..... | 3794½ | .50 | .55 | 10½ | .. | 43 ^{7f} | .. | .. | .. | .. | .. | Professional ¹¹ |
| Mississippi, Cleveland, Delta State Teachers College..... | 2880 | .30 | .40 | .. | .. | 38 | .. | .. | .. | .. | .. | None ¹⁵ |
| Missouri, Cape Girardeau, Southeast Missouri State College..... | 7425 | .40 | .40 | 12 | .. | 44 | .. | 30 | .. | .. | .. | Professional |
| Missouri, Warrensburg, Central Missouri State College..... | 8619 | .40 | .. | 12 | 12 | 42 ^{7h} | 42 ^{7h} | 11 | 11 | 7 | 7 | Professional ¹⁶ |
| Nebraska, Kearney, State Teachers College ^{1b} | 4941 ³ | .35 | .50 | 12 | .. | 38 | .. | 30 | .. | .. | .. | None |
| Nebraska, Peru, State Teachers College..... | 1729 | .40 | .40 | 12 | .. | 40 | .. | 18 | .. | .. | .. | .. |
| New Hampshire, Keene, Teachers College..... | 350 ³ | .40 | .50 | 10 | .. | 40 | .. | .. | .. | .. | .. | .. |
| New York, Albany, State College for Teachers ^{1d} | .. | .. | .. | 10 ⁶ | 10 ⁶ | 38 ⁷ | .. | 28 ³ | .. | .. | .. | .. |
| New York, Geneseo, State Teachers College..... | .. | .. | .. | 10 | 12 | 40 | 20 | None | 11 | 40 | 3 | Professional ¹⁸ |
| North Carolina, Greenville, East Carolina Teachers College..... | 8600 | .39 | .39 | 12 | 9 | 39 | 39 | 45 | .. | .. | .. | None |
| North Dakota, Minot, State Teachers College ^{1a} | 2340 | .40 | .50 | 11 | .. | 40 | .. | None | .. | .. | .. | Professional ¹⁹ |
| North Dakota, Valley City, State Teachers College..... | .. | .40 | .40 | .. | .. | .. | .. | .. | .. | .. | .. | .. |
| Oklahoma, Alva, Northwestern State College ^{1b} | 2414 | .50 | .50 | 12 | .. | 44 ⁷ⁱ | .. | .. | .. | .. | .. | None |
| Oregon, Ashland, Southern Oregon College of Education ^{1b} | 848 | .50 | .65 | 12 | 9½ | 40 | 40 | 22 | 12 | 17 | 17 | Librarian ²⁰ |
| Oregon, LaGrande, Eastern Oregon College of Education..... | 2311 | .50 | .65 | 12 | .. | 41 | .. | 24 | .. | .. | .. | Librarian ¹² |
| Oregon, Monmouth, College of Education..... | 2913 | .60 | .75 | 12 | .. | 40 | .. | 26 | .. | 4 | .. | Head Librarian ¹¹ |
| Pennsylvania, West Chester, State Teachers College..... | 5602 | .40 | .40 | 9 ^{5b} | 12 | 40 | 41 | None | 15 | 20 ³ | 9 ³ | None |
| South Dakota, Aberdeen, Northern State Teachers College..... | .. | .. | .. | 12 | 12 | 43 | 43 | 24 | 24 | 20 | 20 | .. |
| South Dakota, Spearfish, Black Hills Teachers College ^{1b} | 4500½ | .40 | .65 | 12 | .. | 40 | .. | 10 | .. | 4 | .. | None |
| Texas, Commerce, East Texas State Teachers College ^{1d} | 14,529 | .35 | .35 | .. | .. | 40 | .. | 21 ³ | .. | 26 | .. | None |
| Texas, Denton, North Texas State Teachers College..... | 45,369 | .40 | .50 | 12 | .. | 40 | .. | 18 | .. | .. | .. | None |
| Texas, Huntsville, Sam Houston State Teachers College ^{1e} | 10,760 | .. | .40 | 12 | 12 | 40 | 40 | 21 | .. | 20 | .. | None ²² |
| Virginia, Farmville, State Teachers College..... | 6388 | .30 | .50 | 12 | 12 | 40 | 40 | .. | .. | .. | .. | Professional ²³ |
| Wisconsin, Milwaukee, State Teachers College ^{1d} | 1110 | .45 | .60 | 12 | 12 | 38 ^{7j} | 38 ^{7j} | 30 | 18 | 24 | 8 | None |
| Wisconsin, Oshkosh, State Teachers College ^{1b} | .. | .50 | .50 | 12 | 12 | 41 ^{7k} | 41 ^{7k} | .. | .. | .. | .. | None ²⁴ |
| High..... | 45,369 | .60 | .75 | 12 | 12 | 44 | 44 | 50 | 31 | 61 | 23 | .. |
| Median..... | 3794½ | .40 | .50 | 12 | 12 | 40 | 40 | 21 | 12 | 20 | 8 | .. |
| Low..... | 10 | .25 | .30 | 9 | 9 | 35 | 20 | 10 ²⁵ | 11 ²¹ | 4 | 3 | .. |

1a-e Figures are as of Jan. 1, 1948, except: (a) January 1947; (b) June 1947; (c) July 1947; (d) August 1947; (e) September 1947. 2 Not reported. 3 Approximate number. 4 Not on hourly basis. 5a ½ of salary extra for summer school. 5b Summer session paid separately. 5c ½ extra for each summer session. 6 1 person on 12-month basis. 7 Hours vary during summer vacation. 7a-h (a) 41½ during summer vacation; (b) 19 hours during summer vacation; (c) 35 hours during summer vacation; (d) 20 hours during summer vacation; (e) 38 hours during summer vacation; (f) 41 hours during summer session; (g) 34 hours during summer vacation; (h) 40 hours during summer vacation; (i) 40 hours during summer session; (j) 35 hours during summer session. 8 All school vacations and holidays; number of days not indicated. 9 Included in total for special holidays. 10 Included in annual

vacation. 11 ½ salary. 12 Leave granted after 6 years of service at half salary. 13 Leave granted after 7 years of service on recommendation of president and resident director. 14 Leave granted after 3 years of service at half salary; must return to position. 15 Every other summer quarter work optional. 16 Leave granted after 7 years of service; ½ 9-months salary. 17 Rules being revised. 18 Difference between substitute salary and their own. 19 Half salary for 12 weeks in academic year; does not apply to summer school. 20 If no additional cost to institution. 21 No legal basis in South Dakota, but occasionally granted. 22 Will apply to staff when it comes. 23 Without salary. 24 Librarian given full summer off every fourth year. 25 Not counted in computing median. 26 "None" omitted in computation. 27 No record kept. Paid from other funds.

Brief of Minutes of Association of Research Libraries, January 30, Chicago

In accordance with a recent decision to recognize an apparent public interest in the activities of the Association of Research Libraries, the following digest of the minutes of the meeting of the association which was held in Chicago, January 30, is submitted.

Farmington Plan

Keyes D. Metcalf, chairman, Farmington Committee, reported briefly on the present status of the plan.¹ It went into effect on Jan. 1, 1948, on an experimental basis for the three countries, Switzerland, Sweden, and France. In each of the two former countries a dealer is being selected who will handle all Farmington Plan business. In France, the Bibliothèque Nationale will supply one of its "deposit" copies that can be spared; when it does not possess such a copy it will make a purchase for the Farmington Plan.

For the present all Farmington Plan books are to be shipped to the New York Public Library where they will be classified and re-shipped to the receiving libraries. The New York Public Library will be reimbursed by the Association of Research Libraries for the time of its staff spent in work on the Farmington Plan. It is hoped that at the end of six months a sufficiently clear pattern will have been established so that a representative of the association can be sent to Europe this coming summer to arrange with the Farmington foreign dealers to classify and distribute the books directly to the receiving libraries. It is hoped that this representative may also undertake preliminary arrangements with

¹ The Farmington Plan is a cooperative undertaking of a group of research libraries, most, but not all, of which are members of the Association of Research Libraries, to bring into this country and centrally record in the Union Catalog at the Library of Congress at least one copy of every book of possible research interest published anywhere in the world. However, the plan is still limited, even in the preliminary discussions which have been going on for several years, to works published in the Latin alphabet.

other countries with a view to a possible extension of the plan beginning Jan. 1, 1949.

Mr. Metcalf explained that making assignments to the cooperating libraries under the Farmington Plan had been far from easy. Nevertheless, the serious complications had been surprisingly few. Fifty-two different libraries are accepting responsibility for one or more subjects. There are still some minor adjustments to be made. There was some discussion of the allocations, but on the whole it appeared that the assignments worked out by the committee have been received with a fair degree of approval.²

To finance the plan through the first three years of experimental operation, (i.e., to meet operational expenses, not to buy books), Mr. Metcalf was able to announce that a grant of \$15,000 had been made to the Association of Research Libraries by the Carnegie Corporation of New York. Since the association is an unincorporated body without a permanent office, the Carnegie grant has, at the association's request, been turned over to New York Public Library, which will serve in this matter as its disbursing and accounting agent and report on demand of the executive secretary of the association.

Cooperative Cataloging of Farmington Receipts

The committee on this subject, of which R. A. Miller of Indiana University is chairman, recommended, and the association adopted, a detailed plan which calls for a preliminary card to be prepared in prescribed form and mailed to the Union Catalog in Washington (with duplicate copy to Harvard, which has volunteered as a temporary measure, to check all Farmington receipts in order to make sure that all material is coming into

² Since the January meeting a revised document giving the Farmington Plan allocations as of March 1948, has been distributed to the cooperating libraries.

the country under the plan which should come in), within one month after receipt of the item. In some cases of marginal or ephemeral material this preliminary card may serve as the final and complete record, but in the case of more important material provision is made for fuller cataloging and for the printing of cards through prompt cooperation between the receiving library and the Library of Congress.

Anonymous and Pseudonymous Cards

The Librarian of Congress had recently reported to the executive secretary a proposal by Wyllis E. Wright of Williams College, that there be included in the Supplement to the *Catalog of Books Represented by Library of Congress Printed Cards* a set of Library of Congress cards for anonymous and pseudonymous entries, amounting in all to about 29,000 cards. "These are the cards," writes Mr. Evans, "which have bracketed headings and some libraries have purchased sets for inclusion in their deposited catalogs. The cards would be arranged by title and interfiled with other entries in the Supplement."

The Librarian of Congress thought the proposal an excellent one and expressed a willingness to supply a set of these cards to Edwards Brothers for inclusion in the Supplement if the association would approve. Approval was voted unanimously.

Union List of Serials

An important report by A. D. Osborn, A.R.L. representative on the Joint Committee on the Union List of Serials, was considered briefly. It is proposed to ask the Library of Congress to offer a permanent home for the Union List of Serials, which might be set up with a permanent editorial staff. There is some thought that the third edition might well be a consolidated union list containing all types of serials; but the editorial cost of such a work would certainly be much greater than the \$60,000 which was required for the second edition. If a foundation grant cannot be obtained to cover the editorial cost, it has been suggested that the work might be "farmed out" among research libraries on a cooperative basis, letter by letter.

Since the Osborn report had been so recently distributed, and since it involved such difficult

problems, its serious discussion was postponed until the June meeting.

Microfilming Cooperation

Vernon Tate, of M.I.T., chairman, presented a report of the Committee on Microfilming Cooperation. It indicated that the committee is concerning itself primarily with efforts to preserve American newspapers of national importance, that it is engaged through the Library of Congress in preparing a list of about 2500 newspapers that have been filmed or are in process of being filmed, that it is engaged in investigations looking toward the establishment of standards for newspaper reproduction on microfilm, and that the Library of Congress has generously agreed to act as a clearing house of information concerning long run microfilm projects. It was moved that the Library of Congress preliminary list above-mentioned be photo-reproduced and distributed by the A.R.L. at an estimated price of \$1.50 per copy. Though the motion was manifestly viewed with favor, the matter was, after a brief discussion, referred to the Advisory Committee with power.

Library Statistics

A letter from A. F. Kuhlman of the Joint University Libraries indicated that the matter of library statistics had not yet been settled to the satisfaction of all concerned, and urged that the matter be reopened for fresh consideration. The chairman of the last committee on statistics being not at all averse to having the matter reopened, it was voted that a committee on library statistics be reconstituted with a new membership.³

Increased Cost of Library of Congress Cards

The executive secretary referred to the communication from the Librarian of Congress which had been published in the Library of Congress Processing Department, *Cataloging Service*, Bulletin 13, Appendix, December 1947, in which it has been announced that it had been decided to carry out the

³ The new committee has now been appointed with the following members: Guy R. Lyle, Louisiana State University, chairman; Benjamin E. Powell, Duke University; Rudolf Hirsch, University of Pennsylvania; Richard H. Logsdon, Columbia University.

instruction of the House of Representatives' Committee on Appropriations to include "a fair proportion of the initial cataloging cost" in the price of Library of Congress cards. At the request of the Librarian of Congress, a joint meeting of the A.L.A. and the A.R.L. had been held the previous evening (January 29) for a discussion of this matter. The meeting had been well attended. The Librarian of Congress had been present, and had spoken at length. After a considerable discussion the meeting had ended by passing two resolutions as follows:

1. That it be recorded as the sense of this meeting that the officers of the A.L.A. and the A.R.L. appoint between them a committee to act jointly with the Librarian of Congress upon the issue he had raised, in order to resolve it in a manner which will most satisfactorily meet both his instructions and the interest of the country's libraries. This committee, especially its A.L.A. members, shall represent all types of libraries.

2. That the President of the A.L.A. and the executive secretary of A.R.L. invite other interested library associations to join them in the formation of a joint committee to develop a program for presenting to Congress the interests of American libraries in the cataloging and card distribution services of the Library of Congress and for mobilizing American librarians in support of that program, giving special attention to adequate representation of all types of libraries making use of Library of Congress printed cards.⁴

Proposal to Use Fulbright Funds for Large Scale Microcopying Abroad

The executive secretary drew attention to a lengthy document just received from Edgar L. Erickson, chairman, Committee on Documentary Reproduction, American Historical Association, entitled "Proposal for Participation of Research, College, and Reference Libraries in the American Historical Association-Library of Congress Project for the Microcopying of Research Materials Abroad,"

⁴In response to the first of the two resolutions, a committee has been appointed with the following membership: Marjorie Bowers, Indianapolis Public Library; Amy Winslow, Enoch Pratt Free Library; Janet Agnew, Bryn Mawr College; Herman Henkle, John Crerar Library; Keyes D. Metcalf, Harvard University Library, chairman. Since it is hoped that this committee may succeed in finding a solution of the problem, the committee required by the second resolution was not promptly appointed.

together with a letter of endorsement from the Librarian of Congress. The proposal is to use some part of the Fulbright funds to support a great program of microfilming of research materials in foreign countries where such funds are available. Laudable as the project is, there is doubt whether it is legally possible to use Fulbright funds for it. However, Mr. Erickson is engaged in an effort to get a liberal interpretation of the law which will permit such use, and he feels it would be of great assistance if research, college, and reference libraries would undertake to supply necessary dollar credits to meet costs in this country in case Fulbright funds should be used to support the program abroad.

Since Mr. Erickson's document was far too long for careful consideration in the present meeting, it was voted to refer it to the Advisory Committee for suitable action.

The Analysis of Scholarly Serials

The executive secretary drew attention to an exchange of letters on this subject which had taken place between himself as director of libraries at the University of Pennsylvania, and the Librarian of Congress. The former had emphasized the scholarly importance of analytics and had drawn attention to the arrears into which this work had fallen since 1939, both at the Library of Congress and among the cooperating research libraries. He had urged that a fresh effort be made to push the work once more with vigor and bring it up to date, though he had acknowledged the present incapacity of his own institution to make any very helpful contribution. The Librarian of Congress had answered that it was hoped that there could be a new edition of Bulletin no. 16-19 (April 1, 1932) of the Library of Congress Card Division issued toward the end of 1948 or early in 1949, which would be the first step toward reform. He fully acknowledged the small progress which had been made with analytics since 1940, due to war conditions and other work deemed more pressing, and then more recently due to the problem of cataloging foreign acquisitions received under the Cooperative Acquisitions Project, a problem which involved both the Library of Congress and the cooperating research libraries. Though he expressed the hope that the analyzing of serials might be

renewed in a small way in 1948, there seemed little prospect of resuming the work in full scale in the near future.

In discussion, Mr. Evans said that in general the Library of Congress regarded analytics as secondary to cataloging of arrears of books, but he was not certain that this proposition was sound and he would be glad to consider any proposal. He thought that an arrearage of cataloging was probably a necessity in any very large library, but he freely acknowledged that it may have been "overdone" in the Library of Congress. Mr. David expressed the view that if the principle were accepted that book cataloging should come before analytics there was little hope of doing anything about analytics in the foreseeable future. It was pointed out that the list of serials to be analyzed had not been revised for seventeen years, and the suggestion was made that some of the items on the list might well be dropped because they could readily be controlled through other indexes or media. It was moved that the committee on analytics be reconstituted, but the motion was lost for want of a second, and the discussion ended inconclusively.

Simplification of Cooperative Cataloging Procedure

In the course of the foregoing discussion on the problem of analytics, the Librarian of Congress expressed sympathy with a proposal to print cooperatively cataloging copy without revision. After brief discussion, it was voted unanimously that the Association of Research Libraries approves and commends the effort which the Librarian of Congress is making to simplify (and so speed up) cooperative cataloging procedure.

Committee on UNESCO Affairs

Carl White, chairman of the committee, referred to the request of the Director-General of UNESCO that member nations do what they could to create bibliographies of their significant publications during the war years, 1939-46. He felt that the need so far as this country was concerned had been largely filled by the two following publications:

American Library Association, International Relations Board, Committee on Aid to Libraries

in War Areas. *Books Published in the U.S., 1939-1943*. American Library Association, 1945. (Supplement, 1944 and 1945).

National Research Council, Committee on Bibliography of American Scientific and Technical Books. *Scientific, Medical and Technical Books Published in the United States of America, 1930-1944*. National Research Council, 1946.

However, he recognized that it was important that steps be taken to bring these bibliographies up to date and to make them more comprehensive, but since it had proved impossible to get his committee together and formulate specific plans, definite recommendations would have to be delayed until the next meeting.

United States Book Exchange

The executive secretary referred to the fact that the American Book Center for War Devastated Libraries, Inc. is being formally brought to an end, probably about April 1, and that an effort is being made to set up a United States Book Exchange as a successor to it. In this effort the Association of Research Libraries is being asked to participate, and the executive secretary felt that the matter ought not to be delayed until another meeting of the association. Therefore he said that he would look to the Advisory Committee for authority to act at the proper time.

The Lending of Positive Microfilms of Newspapers

The librarian of Duke University Library reported that his institution subscribes for a large number of newspapers, many of them on microfilm. He has reached the conclusion that a large number of them could be dispensed with if he could be assured that they would be available on film elsewhere and could be borrowed. For his part he would be quite willing to set aside the rule against interlibrary loans of positive microfilms, so far as long runs of little used newspapers are concerned, and lend freely, provided other research libraries would reciprocate. He wished to have the matter discussed. The chairman of the Committee on Microfilming Cooperation said that the matter was under consideration by his committee, and that he would report on it at the next meeting.

(Continued on page 256)

A Brief of the Minutes of the Meetings of the Board of Directors of A.C.R.L., Chicago

Meeting, Jan. 30, 1948

The board discussed the question "What shall A.C.R.L. do about an annual meeting in 1949 if A.L.A. decides to hold regional meetings?" and decided to postpone decision on this question until they could find out what other A.L.A. divisions plan to do under those circumstances.

The next matter was a request for recommendations about the future of *College and Research Libraries*. Dr. White presented his resignation as editor of the journal and recommended that Maurice F. Tauber be appointed editor. The board unanimously passed a motion accepting his resignation and thanking him for his services and appointed Dr. Tauber as editor of the journal.

There was careful discussion of ways and means of meeting the increased production costs of *College and Research Libraries*. Various suggestions were made: that the subscription price be raised; that the number of subscribers be increased; that the possibility of introducing a plan of group subscriptions be investigated; that the mailing practices of other journals be studied. A motion was passed authorizing President Carlson to appoint a committee to plan for and solicit additional subscribers to *College and Research Libraries*. Decision on the matter of increasing subscription prices to *College and Research Libraries* was postponed until the next meeting, at which time Mr. Rush was asked to present an analysis of the cost of the journal.

There was some discussion of Milton E. Lord's proposal to reconstitute the A.L.A. as a federation which would concern itself only with activities at the national and international level, and to which both geographical and subject divisions could belong. Those members of the board who had seen the proposal expressed interest and approval. The board

liked the proposal but felt that no positive action could be taken because not all the board members had seen the proposal, and because not enough was yet known about the ideas of the Fourth Activities Committee.

Meeting, Jan. 31, 1948

The first question discussed was that of financing the *College and Research Libraries* held over from the previous meeting. Several possibilities were suggested: that the rate for advertising might be higher; that the possibility of a two-year subscription rate be looked into; that the members of A.C.R.L. be allowed to substitute *College and Research Libraries* for the *A.L.A. Bulletin* (it was pointed out that there would have to be a change in the A.L.A. Constitution before this substitution could be made); that a new and more specific contract between *College and Research Libraries* and the A.L.A. be drafted; that the membership fee be increased enough for everybody to receive the journal automatically; that the committee on membership stress the advantages of subscribing to *College and Research Libraries*. It was voted to raise the subscription price of the journal \$1. It is now to be \$3 per year to members of A.C.R.L. and \$4 per year to nonmembers, beginning with the next fiscal year, Sept. 1, 1948. A motion was passed authorizing the appointment of a committee to investigate all aspects of the financing of *College and Research Libraries* including such items as club, long-term, and group subscription rates, and so forth.

The executive secretary gave a report on the work of his office for the first nine months. It was agreed that it is important for the executive secretary to do as much as he can to answer requests for information from smaller college and reference libraries and from individual librarians.

President Carlson read the slate of officers

prepared by the nominating committee. (The list was published in the April 1948 issue of *College and Research Libraries*.)

A motion was passed to send to the Librarian of Congress the resolution of A.C.R.L.'s Committee on Publications commending the *U.S. Quarterly Book List*.

At the request of the A.C.R.L. Committee on College and University Library Buildings it was voted to have building plans available at the desk of the executive secretary at the Atlantic City conference.

In regard to the question as to whether a special committee on research studies is needed the board recommended that the executive secretary secure lists or dissertations under way from all the graduate library schools and let it go at that for the present.

President Carlson stated that he thought A.C.R.L. would need two general sessions at Atlantic City, one a business meeting and the other a program meeting. Approval of this idea was expressed.

The comments and suggestions made by G. Flint Purdy in the matter of statistics in his paper presented at the A.C.R.L. general session January 30 were discussed. It was

agreed that President Carlson should ask for volunteers to collect, tabulate, and publish general and salary statistics from those institutions circularized last year.

It was suggested that the executive secretary inform the American Council on Education that A.C.R.L. will be helpful in any way it can to their proposed committee to identify the main issues of the report of the President's Commission on Higher Education.

It was approved that the executive secretary notify A.L.A. life members before 1940 as to the procedure for becoming life members of A.C.R.L.

The resignation of Wilson M. Ranck, chairman, Committee on Encyclopedia of Sports, Games, and Recreation, was announced. A motion was passed to strike this committee from the list of A.C.R.L. committees.

It was suggested that the executive secretary investigate the procedure for affiliating with the American Association for the Advancement of Science, and that if no expense be involved, he go ahead with this.

N. ORWIN RUSH
A.C.R.L.
Executive Secretary

Minutes of A. R. L.

(Continued from page 254)

Gesamtkatalog der Wiegendrucke

The executive secretary reported that Lawrence S. Thompson, librarian, Western Michigan College, had recently forwarded to him an important letter from Professor Dr. Erich von Rath which indicates that the Germans are likely to be able to go ahead fairly promptly with the *Gesamtkatalog* and complete it on their own resources. "We may

hope that sometime in 1948 the second part of Volume VIII may again be sent to all subscribers."

Time and Place of the Next Meeting

It was voted that the next meeting be held in Philadelphia on Friday, June 11. The experiment is to be made of meeting apart from and in advance of the A.L.A. conference.

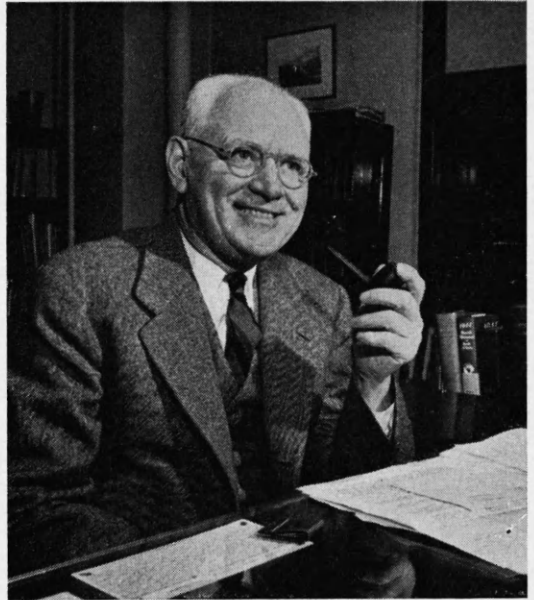
Personnel

APRIL 30, 1948, marked the end of twenty-eight years of service as Executive Secretary of the American Library Association for Carl H. Milam. Perhaps a majority of the members of the Association have known no other Secretary for their Association than Carl Milam. And, no one would deny that he has left an indelible mark on the profession of librarianship, a mark that few people can hope to match.

Someone who has known Carl Milam for all of those twenty-eight years will have to appraise his important contributions to a better America. The A.L.A.'s "expanded program" of the years following World War I was one of his important works. The various activities committee reports owe much to his advice and counsel. The postwar plans and the national library plans bear his mark. The A.L.A.'s entire international relations program has been close to his heart—the list could be extended indefinitely.

But those who know him best realize that many of Carl Milam's major contributions to librarianship will never be attributed to him. For he has worked in a quiet, "anonymous" way stimulating others "to carry the ball" and seeing that others received the credit. In his fertile mind have originated many important ideas, but once they have been passed on to the proper group, he has served only as a loyal and efficient executive should—to see that the things get done. To attempt to call the roll of important developments that originated with Mr. Milam would be an impossible task. Parenthetically, it may be said that many foolish and ill-advised plans have never seen the light of day because of his good sense.

In many respects, Carl Milam's greatest contribution to librarianship has been in raising the "prestige" of librarianship. For he, personally, has been largely responsible for seeing that librarianship generally and the A.L.A. in particular have been allied with and active in the affairs of many scientific, educational, and cultural organizations. Mr. Milam is almost as well-known in the American Council on Education, UNESCO, the



Carl H. Milam

American Association for Adult Education, etc., as in the A.L.A. Libraries and their important services are also well-known in such groups—thanks largely to his efforts.

In one sense, it is a tribute to Mr. Milam's deep sense of public service that he has resigned as Executive Secretary of A.L.A. to become director of library services for United Nations. It would have been easier for him to remain in Chicago for the two remaining years before his retirement than to undertake a difficult job in New York. But the call of his profession was a clear one and the chance to make an outstanding contribution in an area which has always been one of his major interests was too great to refuse. All of those who have known him realize that A.L.A. will sorely miss him but that United Nations needs him. He carries to his new assignment the sincere good wishes of his many friends.—*Errett W. McDiarmid.*

ON JULY 15, Lewis C. Branscomb becomes associate director of the Ohio State University Library.

For the past three and a half years Mr.

Branscomb has served as assistant director in charge of public service departments at the University of Illinois. His responsibilities in this position have been diverse, including supervision of the general circulation and reference departments, two dozen departmental



Lewis C. Branscomb

libraries, and a number of specialized reading rooms and collections. He has also organized and directed a new junior college library at Galesburg, a branch of the university opened in 1946. In common with other college and university libraries during the past two years,

the public service functions of the University of Illinois Library have grown tremendously. Well over 1,000,000 volumes per year are being circulated. Many problems have naturally developed in the course of the expansion and these Mr. Branscomb has handled with great ability. Directing a staff of 83 professional librarians and clerical workers and 150 student assistants, he has built up a smooth-running organization, which is meeting effectively the emergency conditions created by the increase in demands for library service.

Prior to coming to Illinois, Mr. Branscomb headed the libraries of the University of South Carolina and Mercer University, and was on the University of Georgia library staff for two years. He is a graduate of Duke University, and holds bachelor's and master's degrees from the University of Michigan Department of Library Science. Except for the dissertation, on which he is now engaged, he has completed the requirements for a doctor's degree in the University of Chicago Graduate Library School.

Because of the variety of his administrative experience in different types of libraries and his broad professional education, Mr. Branscomb is particularly well-equipped for the important administrative post he is assuming at Ohio. He brings to the position a strong combination of courage, determination and initiative, and a friendly, likeable personality, all of which augurs well for the contribution he will make to Ohio State's library progress.—
Robert B. Downs.

Appointments

John Mackenzie Cory, associate librarian of the University of California at Berkeley, will assume his duties as Executive Secretary of the American Library Association on Sept. 1, 1948. Harold F. Brigham, director, Indiana State Library, Indianapolis, is the Interim Executive Secretary until about August 20.

Lee Zimmerman, formerly director of libraries of the state department of education, St. Paul, Minn., is now librarian of the University of Idaho at Moscow.

Ruth Schley has resigned her position as senior cataloger at Louisiana State University Library, Baton Rouge, to accept the position

of assistant catalog librarian in charge of the serials division of the Columbia University Libraries.

Robert M. Lightfoot, assistant librarian at Louisiana Polytechnic Institute, has succeeded Thomas S. Harding as librarian of Missouri Valley College at Marshall. Mr. Harding will become librarian of Evansville College, Evansville, Ind.

Elizabeth C. Borden, recently appointed librarian of the Penniman Library of the University of Pennsylvania, has been made head of the cataloging department of the university library.

Genevieve Bale, formerly head of circula-

tion at Chico State College, Chico, Calif., is now reference librarian at the State College of Washington at Pullman.

The Library of Congress has announced the appointment of Mrs. Léonie Adams Troy and William Carlos Williams as consultant in

poetry in English for the years 1948-49 and 1949-50, respectively.

Katharine S. Diehl, who has been and still is librarian of Texas Lutheran College in Seguin, was inadvertently sent to China in the April issue. Our apologies.

Necrology

Rosilia H. Callaghan, who had been associated with the School of Journalism of Louisiana State University since 1924 and its librarian since 1937, died in Baton Rouge on March 14, after a long illness.

Thomas F. Gardner, head of processing and instructor in library science at Kent University, Kent, Ohio, died of a heart attack on February 20. He was previously on the staff of Teachers College, Columbia University.

Recent Personnel Changes in Foreign Libraries

AUSTRIA

Dr. Hanns Bohatta died in Vienna on Oct. 30, 1947. Appointed *Kustos* of the University of Vienna Library in 1911, he was retired at a relatively early age as the result of the government's policy of economy after the first World War. Subsequently he worked for the well-known antiquarian booksellers, Gilhofer and Ranschburg.

DENMARK

Thomas Marius Døssing, long prominent in Danish popular library work, died on Apr. 18, 1947 in Moscow, where he was serving as Danish minister to the U.S.S.R.

Copenhagen

Dr. Lauritz Nielsen, director of Division I (Humanities) of the University of Copenhagen Library, died on July 15, 1947. Dr. H. G. Topsøe-Jensen was appointed to fill this position on Nov. 22, 1947.

FRANCE

Paris

Henri Lemaître, archivist, palaeographer, librarian, and adjutant director of the Institut Scientifique de Recherches Economiques et Sociales, died in Paris on Nov. 8, 1946. M. Lemaître was well-known for his activities in international library circles and served as an advisory editor of the *Library Quarterly*.

M. Armand Rastoul, in charge of the Bibliothèque Nationale catalog, 1929-46, died on Feb. 5, 1946.

GERMANY

Dr. Johannes Wolf, of the old Preussische Staatsbibliothek (now Oeffentliche Wissenschaftliche Bibliothek), died in Aachen on May 25, 1947 at the age of 78.

Dr. Joris Vorstius, of the Oeffentliche Wissenschaftliche Bibliothek, has received an appointment to teach library science in the University of Berlin. He is also serving as editor of the revived *Zentralblatt für Bibliothekswesen*, of which vol. 61, nos. 1/2, appeared late in 1947.

Dr. Gustav Wahl, formerly of the Staats- und Universitaetsbibliothek in Hamburg, died on Apr. 13, 1947.

Dr. Axel von Harnack has received an appointment on the University of Tuebingen faculty to teach library science and historiography.

Early in 1947 Dr. Georg Leyh, retired director of the University of Tübingen Library, submitted to the publishing house of J. C. B. Mohr in Tübingen a manuscript entitled *Die deutschen Bibliotheken nach dem Krieg*, a careful survey of the holdings, administration, and personnel of the principal German research libraries. Although page proof exists, the book had not yet been published in July 1947. It was summarized by Dr. Leyh in a

lecture before the Verein Schwizerischer Bibliothekare in Bern in December 1946, and this summary was published as "Die Lage der deutschen wissenschaftlichen Bibliotheken nach dem Kriege" in the *Nordisk Tidskrift för Bok- och Biblioteksväsen*, XXXIV (1947), 58-80. The summary, however, does not contain the valuable survey of personnel which appeared at the end of the page proof of the book. Through the kindness of Dr. Pierce Butler of the Graduate Library School, University of Chicago, it has been possible to examine the page proof of Dr. Leyh's study for the following information to supplement that given about German librarians in *College and Research Libraries* 8:82-85, January 1947.

Aachen

Dr. Wilhelm Bayer, formerly a professional assistant in the Stadtbibliothek, is now the director of that library.

Augsburg

Dr. Paul Geissler has succeeded Dr. Richard Schmidbauer as director of the Staats- und Stadtbibliothek. Dr. Schmidbauer is living in retirement.

Berlin

Dr. Adolf Jürgens, widely known among foreign librarians as the director of the Reichstauschstelle of the former Preussische Staatsbibliothek (now Öffentliche Wissenschaftliche Bibliothek), died in November 1945. Dr. Konrad Haebler, one of the nine members of the Kommission für den Gesamtkatalog der Wiegendrucke, died on Mar. 13, 1947.

Bremen

Dr. Hermann Entholt has succeeded Dr. Hinrich Knittermeyer as director of the Staatsbibliothek.

Darmstadt

Dr. Hans Rasp has succeeded Dr. Karl Esselborn as director of the Hessische Landesbibliothek. Dr. Walther Gebhardt of the professional staff died on Sept. 11, 1944, in Russian captivity.

Detmold

Dr. Erich Kittel has succeeded Dr. Eduard Wiegand as director of the Lippische Landesbibliothek.

Fulda

Dr. Wilhelm Hopf has succeeded Dr. Josef Theele as director of the Landesbibliothek. The office of director of the Fulda Landesbibliothek has been combined with that of the director of the Kassel Landesbibliothek.

Gotha

Dr. Otto Geithner has succeeded Baron Eberhard Schenk zu Schweinsberg as director of the Thüringische Landesbücherei (formerly Herzogliche Bibliothek.) A large proportion of the holdings of this library (with the blanket exception of Thuringiana and material from the Gymnasialbibliothek) were lost to the Russians by confiscation.

Jena

Dr. Theodor Lockemann, formerly director of the university library, died in an air raid on Feb. 9, 1945. His successor has been tentatively announced as Dr. Albert Predeek, former director of the old Technische Hochschule Library in Berlin-Charlottenburg, but formal approval of the appointment by governmental authorities had not been given in July 1947. This information, taken from Leyh's survey and from Dr. Predeek's communications, is contrary to that given in *College and Research Libraries* 8:84, January 1947.

Kiel

Dr. Herbert Oberländer, former director of the university library, died on May 22, 1944 during an aerial attack.

Leipzig

Dr. Edith Rothe has succeeded Dr. Johannes Hofmann as director of the Stadtbibliothek.

Dr. Paul Güntzel, former director of the old Reichsgerichtsbibliothek, died in Leipzig on May 6, 1945. He has been succeeded by Hildegard Härtwig as "kommissarische Leiterin."

Lübeck

Dr. Gustav Struck, former director of the Bibliotheken der Hansestadt Lübeck (composed of the Stadtbibliothek and the Öffentliche Bücher- und Lesehallen) has been succeeded by Dr. Peter Karstedt.

Magdeburg

Dr. Arthur Reichsritter von Vincenti has been succeeded by Dr. Hermann Bernhardt as director of the Stadtbibliothek.

Tübingen

Dr. Georg Leyh, who has reached the age of seventy, has been retired as director of the university library. Dr. Predeek reports that Dr. Wilhelm Hoffmann, formerly director of the Württembergische Landesbibliothek in Stuttgart has succeeded Dr. Leyh.

GREAT BRITAIN

Oxford

H. R. Creswick has resigned as Bodley's Librarian. J. N. L. Myers will occupy this post after Jan. 1, 1948.

HUNGARY

Budapest

Dr. Gábor Tolnai has been appointed director of the National Széchényi Library.

Dr. György Trócsányi has been appointed director of the Library of Parliament.

Debrecen

Dr. István Csüry has been appointed director of the University of Debrecen Library.

Pécs

Dr. Lajos Ruzsás has been appointed director of the University of Pécs Library.

Szeged

Dr. Bertalan Csillik has been appointed director of the University of Szeged Library.

PALESTINE

Dr. Curt Wormann, formerly of the Municipal Library of Tel-Aviv, became chief librarian of the Jewish National and University Library in Jerusalem in 1947. Professor Gotthold Weil, who served as chief librarian for eleven years, retired in 1947 in order to devote his time to academic teaching and research in the fields of Turkish and Arabic languages and literatures. Dr. Wormann advises that the Hebrew University will soon publish a report in which there will be a section on the library.

POLAND

Dr. A. Birkenmaier became director of the Jagiellonian Library of the University of Krakau on Sept. 1, 1947, succeeding Dr. Edward Kuntze. Dr. Birkenmaier was formerly director of the University of Posen Library.

Warsaw

Dr. Ryszard Przelaskowski has succeeded Dr. Aleksy Bachulski as director of the Warsaw Municipal Public Library. Dr. Bachulski is now director of the archives of the city of Warsaw.

Count Edward Krasinski, director of the Krasinski Library, died at Dachau in 1941. The library itself was burned in October 1944, but a few of the remaining books are now in the Polish National Library.

The library of the Warsaw Medical Society was totally burned in 1944, and its former director, Dr. J. Zweibaum, is now a professor in the University of Warsaw.

Dr. Ludwik Kolankowski was director of Count Zamoyski's Library until it was burned. He is presently a professor in the University of Toruń.

The Library of the Great Synagogue was burned by the Germans, and its director, M. Bałaban died in 1942, in the Warsaw ghetto.

Dr. Andrzej Grodek has been director of the library of the Central Commercial School since January 1941. The former director, Konstanty Krzeckowski, was arrested by the Germans and died in 1939.

Wilno

Wilno is not at present a part of Poland. Until 1939 the director of the University of Wilno Library was Dr. Adam Lysakowski, who is now the director of the new university library in Lodź.

URUGUAY

Montevideo

Sr. Miguel Angel Pineiro, recently returned from the United States after a year's study at the University of Denver Library School, has been appointed director of the Central Library of the Board of Secondary School Education.

—LAWRENCE S. THOMPSON.

News from

Acquisitions, Gifts, and Collections

The Hindustan Association has announced, at Cornell, plans for the establishment of a library honoring the memory of Mohandas K. Gandhi. An initial collection of 500 books will be formally presented to Cornell University Library next January 30, the anniversary of Gandhi's death. The collection will contain material written by Gandhi, publications by Indians and non-Indians, and books describing the economic, social, and political developments that gave rise to the Indian leader's activities. The Hindustan Association is appealing to individuals, groups, and universities throughout the world to assist in building the collection. R. P. Misra, a former graduate student at Cornell, who is now living near New Delhi, will act as treasurer for India. Interested persons in this country may write to the Mahatma Gandhi Memorial Library Committee, 301 Bryant Ave., Ithaca, N.Y.

Earlier this year the Library of Congress received a remarkable collection of musical manuscripts from Mrs. Gertrude Clark Whittall, whose previous gifts to the library include a quartet of Stradivarius instruments, and an endowment for concerts of chamber music. This new gift consists of original manuscripts of Johann Sebastian Bach, Joseph Haydn, Wolfgang Amadeus Mozart, Ludwig van Beethoven, Johannes Brahms, and Max Reder. Every manuscript is said to represent a work of major importance.

The presentation of the personal and professional papers of Frederick Law Olmsted to the Library of Congress by his son earlier this year has already received wide notice. The great value of this collection to students of Americana will become increasingly apparent. It consists of approximately 30,000 documents extending over the years 1819-1923. Frederick Law Olmsted, 1822-1903, first attained fame as the author of books written after travels throughout the South in the early 1850's, in which he gave a vivid picture of slaveholding society. In 1857 he became one of the chief planners of Central Park in New York, and from that time on his fame as a landscape architect spread. He numbered among his friends some of the out-

standing literary and political figures of the nineteenth century. He corresponded with Washington Irving, Henry Adams, Charles Francis Adams, Charles A. Dana, Henry Ward Beecher, Charles Eliot Norton, James Russell Lowell, and many others.

In April, Columbia University Libraries received as a gift a photostatic copy of the Sahagun Manuscript, one of the great sources for ancient Mexican history, religion, customs, and crafts. Willard A. King, a trustee of Columbia, was the donor. The Columbia copy, according to Mr. King, is one of three versions, two of which are in Madrid, and the third at Florence. Mr. King's gift is a copy of the Florence version. Sahagun, a Spanish historian and one of the first Franciscan missionaries assigned to Mexico (1529), wrote the original version, ca. 1560. Columbia has also received important gifts in the field of vision and optical science. One gift is the bibliography section of the library of the former Dartmouth Eye Institute. It was made possible through the efforts of Clifford L. Treleavan, associate professor of optometry at Columbia, and Robert E. Bannon, formerly of the Dartmouth Eye Institute staff and now a member of the faculty of optometry at Columbia. The other gift is the private collection of Dr. Herman Gould of Brooklyn. It includes a large number of books on vision and related subjects.

The twenty-two original plates used to print "McLees' Alphabets," classic guide of bank note letter engravers in the middle of the nineteenth century, have been presented to the Columbia University Libraries by William H. McLees. Mr. McLees is the son of Archibald McLees, who made the engravings for two editions of his *Alphabet*, published in 1855 and 1878.

Clare Booth Luce, famous playwright and former congresswoman from Connecticut, has presented her personal collection of books on drama and the theatre to Catholic University's Speech and Drama Department. There are over 5000 volumes, many of them rare and treasured items of theatrical lore, according to Rev. Gilbert V. Hartke, O.P., head of the Speech and Drama Department. The collection is particularly well represented by

the Field

works on the American theatre, although it includes books concerned with theatres of all countries and periods. Some of Mrs. Luce's own unpublished manuscripts are included.

Northwestern University has acquired through purchase in Spain, a large and unusual collection of Spanish plays. The collection includes approximately 8500 items. Professor Kenneth Leslie of Northwestern has stated that this acquisition will make Northwestern one of the important centers in the United States for the study of modern Spanish drama. Imprints range from the early nineteenth century to the present. Jens Nyholm, director of libraries at Northwestern, hopes eventually to have a special catalog of this collection printed. Northwestern has also received a collection of thirty-nine first editions of English and American authors as well as a Robert Burns manuscript. Dr. John T. Gernon, Chicago physician and collector, was the donor. The Burns manuscript is a well-preserved two page holograph containing the first version of Burns's poem "Bonnie Doon."

A campaign to raise \$140,000 for the purchase of books for the Law Library at Northwestern was initiated by the Law Alumni Association during March. The money is being raised as a memorial to Col. John Henry Wigmore, dean of the law school from 1901-29.

Jean Hersholt, actor and book collector, has presented a collection of 180 Danish plays and books on the Danish theatre and the graphic arts to the University of California at Los Angeles. The collection includes the original edition of Mantzius' history of the theatre, *Skuespilkunstens Historie*. Lawrence Clark Powell, librarian at U.C.L.A. has stated that the gift is a significant addition to the library's Scandinavian collection and that it will help to make the library at U.C.L.A. one of the centers for scholarly studies in Scandinavian literature and history. The collection traces the development of the Danish theatre from its beginnings in the early eighteenth century to the present day.

Princeton announced in April the receipt of a gift of 1000 volumes from Edward Plaut of New York. Mr. Plaut was a member of the

Princeton class of 1912. The collection contains several presentation copies and a number of first editions of standard works. First editions include ten titles by George Eliot, twelve by Robert Browning, and twenty-one by Sir Walter Scott. The gift includes the original manuscripts of Mark Twain's, "A Curious Experience," and a number of Twain first editions and autographed works.

The priceless private library of seventeenth century philosophical works belonging to the noted European scholar, Dr. Paul Schrecker, was shown in this country for the first time early in April at Swarthmore College. At a tea given for the philosophy departments of Swarthmore, Haverford, and Bryn Mawr, Dr. Schrecker showed his colleagues some of the rare items in the 5000 volume collection that he has built up over the last forty years. The collection is now housed in Roberts Hall on the Swarthmore campus. It contains hundreds of items not available elsewhere in this country. Included are first editions of the works of Descartes, Newton, Spinoza, and other Renaissance philosophers. There are complete first editions of the works of Kant and Fichte. The library boasts what is probably the most complete and important collection of the works of Leibniz in the world. Dr. Schrecker is now a professor of philosophy at Swarthmore, Haverford, and Bryn Mawr Colleges. Formerly he was editor of the works of Leibniz at the Academy of Sciences in Berlin and later taught at the Sorbonne. The collection is not open to the public but qualified scholars will have the privilege of using it at any time.

Massachusetts Institute of Technology has distributed a memorandum describing the Charles Hayden Memorial Library that is soon to be built. The library will be constructed around a central paved and landscaped court or garden approximately 80' wide and 100' long. This court will be bounded on the west by a one-story print and exhibition room 48' wide and 80' long which will include the internationally famous Dard Hunter paper collection and the marine prints of the Forbes, Kendall, and Clark collections.

On the side of the building facing the Charles River the first floor will be occupied by the Dewey Library of Economics and Social Science. Adjacent to this on the north side will be a series of seminar rooms and studies for use by the departments of economics and business and engineering administration. On the east the court will be bounded by a music library and lounge. On the north side of the court there will be a recreational reading room and the English and history library. The entire area of the court and the surrounding buildings will be approximately 200' square, and under the entire area will be a one-story stack with a capacity of more than 300,000 volumes. The total capacity of the institute's library system will be approximately 1,000,000 volumes. The entire first floor of the building is a free area covering the general interests of the humanities and social sciences at the institute. The design of the building will assure ample sunlight in the court. The section of the second floor of the building devoted to the library will consist of an ell on the south and east sides. There are no further stories on the west side, and on the north at this point the structure will be used as an office building for the faculties of the humanities and social sciences. The centralized operations of the library will be housed on the second floor. Books will be received at the northeast corner and will be processed in the east wing. The south wing will house the reference library, the central circulation desk, the card catalog, a bibliography section, and periodicals. There will be a large map room on this floor, the library administrative offices, and on the mezzanine a series of study rooms for the use of the staff and visiting scholars. All library operations in the building are provided with air-conditioning. Large glass areas provide a view of the Charles River. The exterior of the building will be of limestone. The whole structure, which will be 224' long, will be connected to the main academic group of institute buildings at the western end by a glazed cloister. It will also be connected by a basement passage which will be used solely for library purposes.

During the spring, contracts were let for the construction, plumbing, heating, and electrical work on the new library building of Kansas Wesleyan University, Salina. The

building will be completed in time for the opening of school in the fall. It will be a two story structure, 90' by 60'. The exterior will be of brick facing with tile-masonry backing and natural stone trim. The woodwork throughout will be maple. The first floor will house the main loan desk, general reading room, and staff rooms. The second floor will contain the reference room, a seminar room, faculty offices, and a room for audio-visual materials.

An attractive booklet, including drawings and plans of the new Ernest Holland Library at the State College, Pullman, Washington, for which \$2,500,000 has been appropriated, has been issued.

*Committees,
Conferences,
and Curricula*

The Mountain-Plains Library Conference will be held in Estes Park, Colo., August 29-31, according to a statement received from Ralph T. Esterquest, chairman, Conference Planning Committee. The Stanley Hotel is to be headquarters for the five-state meeting being held by librarians of Colorado, Kansas, Nebraska, Utah, and Wyoming.

The Maryland Library Association will hold its annual fall meeting in historic Carmel Hall, at Annapolis, October 8-9. The theme of the conference will be, "Today's Opportunity: Effective Planning for Tomorrow."

In connection with the ceremonies incident to the inauguration of Dr. J. H. Miller as president of the University of Florida, various conferences on Regional Planning in Higher Education were held. Among these was a two-day Conference on Regional Planning for Library Resources on March 6 and 7. Representatives were present from universities and colleges of Georgia, Alabama, South Carolina, and Florida. Robert B. Downs, director of the University of Illinois Library, led the meetings. N. Orwin Rush, executive secretary of A.C.R.L., and A. F. Kuhlman, representing the Joint University Libraries at Nashville, were also present. It is expected that the proceedings of the conference will be published.

The fourth summer training course in the preservation and administration of archives for custodians of public, institutional, and business records will be offered at American University with the cooperation of the Na-

tional Archives and the Maryland Hall of Records from July 26 through August 21. Detailed information may be obtained by writing Ernst Posner, School of Social Sciences and Public Affairs, The American University, 1901 F Street, N.W., Washington 6, D.C.

The twentieth annual report *Publications* of the Henry E. Huntington Library was published in April. It summarizes two decades of growth and achievement and surveys various phases of expansion and problems of maintenance in the library, art gallery, and botanical gardens since the death of the founder, twenty years ago.

William H. Jesse, director, University of Tennessee Libraries, surveyed the library of Northwestern State College, Natchitoches, La., in November 1947. A mimeographed report of the survey has been issued.

Lucile Elliott is the author of "History of the Law Library," in the volume, *A Century of Legal Education*, edited by Robert H. Wetach (Chapel Hill, University of North Carolina, 1947). This is another volume in the Sesquicentennial Publications series, of which L. R. Wilson is director.

Extempore Speaking: A Handbook for the Student, Coach and the Judge, by Donald L. Holley (New York, H. W. Wilson, 1947) contains a number of useful suggestions for librarians who participate in panels and other forms of discussion, although its major emphasis is student performance.

David C. Cabeen is the compiler of *Montesquieu: A Bibliography* (New York, New York Public Library, 1947). According to the prefatory note this is "An annotated, critical bibliography of the editions of Montesquieu's works in the New York Public and the Columbia University Libraries, and of all studies on him in the United States which the compiler has been able to consult."

Librarians interested in gaining an insight into alumni relations will find suggestive F. Hill Turner's *An Adventure in Alumni Relations* (Nashville, Alumni Association, Vanderbilt University, 1947). This volume presents a series of essays containing practical suggestions based on Mr. Turner's experience of twenty years.

Two recent publications of the Columbia

University Press which might be of interest to college librarians are Sister Miriam Joseph's *Shakespeare's Use of the Arts of Language*, which is a handbook of Renaissance theory of composition, and Donald Lemen Clark's *John Milton at St. Paul's School*, a study of ancient rhetoric in English Renaissance education.

Sister Mary Luella and Sister Mary Peter Claver have edited, for the Catholic Library Association, *The Catholic Booklist, 1948*. Fifteen contributors have compiled annotated lists of titles in different subject fields. The publication was issued by the Department of Library Science, Rosary College, River Forest, Ill.

Donald E. Thompson, assistant director of libraries at the University of Alabama, is the compiler of *A Bibliography of Louisiana Books and Pamphlets in the T. P. Thompson Collection of the University of Alabama Library*. Titles bearing Louisiana imprints, as well as those by Louisianians and about Louisiana, are included. The 3339 items have been arranged by subjects and subdivisions of subjects. Many annotations are included. The bibliography should be useful to researchers as a guide to a collection which Dr. W. S. Hoole, director of libraries, describes in the preface as "an inordinately rich source of information about Lower Mississippi Valley literature, history, and social life."

Dr. Victor Selden Clark, author of *History of Manufactures in the United States*, had completed his monumental *Who's Who in Economics* before his death. This is an international biographical encyclopedia, the result of several decades of research. It contains approximately 5000 biographies of scholars, public figures, and others who have made significant contributions to economic theory and practice during the past 1500 years. Issued with the cooperation of the Library of Congress, *Who's Who in Economics* has been published in microfilm form by the American Council on Public Affairs. The length of the original manuscript, approximately 5000 pages, precluded publication in book form at a price within the reach of most libraries and research institutions, according to the publishers. The microfilm version is available in the standard 35mm. width through the American Council on Public Affairs, 2153 Florida Ave., Washington, D.C., at \$10.

The Brooklyn College Library is issuing annotated reading lists in connection with college sponsored broadcasts on Station WNYC. Copies of the reading lists may be obtained free of charge by writing to the Brooklyn College Library, Bedford Avenue at Avenue H, Brooklyn 10, N.Y. Among the topics already covered are: "Can You Understand Modern Music?" "Who and What is Un-American?" "Are the Colleges Doing Their Job?" "What is the Responsibility of Religion to Society?"

The FIAT (U.S. Army's Field Information Agency, Technical) in Germany which has worked in cooperation with the British and French occupation governments, is now preparing a series of reviews of German science. These publications will survey the results of German research in the natural sciences during the period 1939-46. They will include a large amount of material previously classified as "secret." Various libraries have been chosen as depositories for this series which will include some 55 titles covering the fields of physics, chemistry, medicine, biology, and earth sciences. The reason behind their publication is to prevent the loss to the scientific world of much that was learned in Germany during the war period when the interchange of scientific information between Germany and other countries was negligible.

The *Book of Needs* published by UNESCO depicts conditions in 15 countries of Europe and Asia. It is a 112 page illustrated report based upon surveys made by UNESCO's Reconstruction Section under the direction of Dr. Bernard Drzewieski.

The American Society of Mechanical Engineers published "The Engineering Societies Yearbook, 1948" early in March. It describes 8 international engineering organizations, 275 U.S., and 35 Canadian societies. This represents the first of a planned series of volumes concerned with the purposes, activities, memberships, policies, and new developments of all engineering societies, clubs, and councils.

Among the articles in the January 1948 issue of *The Educational Record* are "The Problem of First Principles in Higher Education," by Ordway Tead; "Education in the Modern World," by Harold Taylor; and "Improvement of Reading in High School and College," by Ivan A. Booker.

The *Harvard Library Bulletin* (Winter 1948) contains "The Library of the Harvard Medical School in 1847 and 1947," by Anna C. Holt; "The Reading of Nieman Fellows at Harvard," by Louis M. Lyons; and "Spatial Growth in the Harvard Library, 1638-1947," by Keyes D. Metcalf.

Nouvart Tashjian announces that "Nathaniel Hawthorne: An Annotated Bibliography," which has been in preparation for some years under the auspices of the New York University Libraries, is completed, and the manuscript is in the hands of the publishers. Pre-publication subscriptions, at \$5.00 per bound copy, may be made at the William-Frederick Press, 313 W. 35th St., New York 1, N.Y.

Scholarships, Grants, Prizes

A grant of \$15,000 has been made to the Association of Research Libraries by the Carnegie Corporation, for support of a project in cooperative purchasing of foreign publications, to be paid to the New York Public Library. The Association of Research Libraries and representatives of a number of other libraries and research collections have secured initial support for this Farmington Plan project which will make possible the collection of foreign publications on a cooperative basis. All materials will be made available to the fifty cooperating libraries on microfilm or by loan. During the experimental period only publications from Sweden, Switzerland, and France will be covered. Later the program will be extended to cover other countries. The Carnegie Grant is intended to cover the expenses of an operating center in the United States which, over a three year period, will be located in the New York Public Library.

Luther H. Evans, Librarian of Congress, has announced the establishment of the Bollinger Prize in Poetry, to be awarded each February for the best book of verse by an American author to be published during the preceding calendar year. The amount of the prize is \$1000, and the jury may decline to make an award for any year if in its judgement no poetry worthy of the prize was published. The 1948 award will be announced in February 1949. The jury of selection will be composed of the Fellows in American Letters of the Library of Congress who at present are W. H. Auden, Conrad

Aiken, Louise Bogan, Katherine Garrison Chapin, T. S. Eliot, Paul Green, Robert Lowell, Willard Thorp, Katherine Anne Porter, Karl Shapiro, Theodore Spencer, Allen Tate, and Robert Penn Warren.

Microfilms, Visual-aids The University of California Library, Berkeley, has undertaken a microfilming project which will preserve and make available for study many California newspapers. Some 7,500,000 papers of unbound files in the Bancroft Library are to be photographed during the next several years. The University's Los Angeles campus and the California State Library are participating in the project. Alan D. Covey, head of the Library Photographic Service on the Berkeley

campus, is in charge of technical details.

Nineteen sound motion pictures originally made by Julien Bryan for the use of the former Coordinator of Inter-American Affairs have now been made available in 16mm. size for purchase by educational, noncommercial, nontheatrical use. The subjects of the films pertain to Latin America. The films may be bought from Burton Holmes Films, Inc., 7510 N. Ashland St., Chicago 26, Ill.

The March 1948 issue of *LSU Alumni News* contains an article describing the new Microfilm Department which was recently opened in the University Library of Louisiana State University. This new department is the first of its kind in the area and should benefit scholars who were formerly obliged to send materials away for copying.

Announcement of New Curriculum at Illinois

BEGINNING in September 1948, the University of Illinois Library School, Urbana, will offer a full program of undergraduate and graduate courses to students preparing for professional librarianship in all types of libraries. Programs of study may be followed leading toward the bachelor's, the master's, and the doctor's degree in library science.

1. Entrance to the library school may be made as early as the beginning of the junior or senior year of college. College or library school graduates will be admitted to the graduate courses as described below.

2. Undergraduate students in the library school may follow a program of studies insuring a broad liberal education, a subject specialization, and a strong foundation in the basic professional library courses which will lead to the B.S. in L.S. degree at the completion of four college years. This degree is not regarded as terminal in character, but represents completion of basic preparation for advanced professional studies in the fifth year.

3. The fifth year of advanced professional study, combined with some advanced nonlibrary studies, will lead to a M.S. in L.S. degree.

This degree will represent the minimum academic preparation for professional librarianship.

4. Experienced librarians of marked professional capacity and promise may pursue a program of advanced study and research leading to the degree of doctor of library science. The normal minimum period of study will be the equivalent of two years beyond the new master's degree. An earlier master's degree representing completion of a two year professional library school course may under certain conditions be acceptable in partial fulfillment of the requirements for the doctor's degree.

5. Students holding bachelor's degrees from any accredited institution but without previous course work in library science will be eligible for admission to the master's program upon completion of a portion of the pregraduate professional course. Normally, this may be accomplished in any regular summer session.

6. Students holding bachelor's degrees from any accredited four or five year library school may be admitted directly to the master's program without further course work.

7. Scholarships and assistantships for students in both the master's and doctoral programs are available.