

Quality analysis of dual-frequency smartphone-based ionospheric TEC measurements: what can be achieved?

Jon Bruno^{*,1}, Francesco Darugna^{2,3}, Karl Bolmgren¹, Jannes B. Wübbena², Cathryn Mitchell¹ and Martin Schmitz²

⁽¹⁾ Centre for Space, Atmospheric and Oceanic Science, Department of Electronic and Electrical Engineering, University of Bath, UK

⁽²⁾ Geo++ GmbH, Germany

⁽³⁾ Leibniz University of Hannover, Germany

Article history: received June, 29, 2020; accepted September 13, 2020

Abstract

The growing quality of smartphone-based Global Navigation Satellite Systems (GNSS) chipsets opens a new frontier for scientific research in positioning, navigation and timing applications. The portability and affordability of these instruments could enhance the current GNSS receiver global network for atmospheric monitoring purposes. However, the quality of the measurements gathered from smartphones have not yet been fully assessed. In this paper, an analysis of the quality of smartphone-based Total Electron Content (TEC) measurements is performed. The primary focus of this work is to provide a general analysis on the potential of using smartphone observations for ionospheric sciences. Dual-frequency phase observations are used to measure the relative TEC. For this experiment, GPS L1/L5 and Galileo E1/E5a observations acquired with the Xiaomi Mi8 and Huawei Mate20 X smartphones were considered. Both devices are equipped with the Broadcom BCM47755 chipset, which enables GNSS dual-frequency measurements.

More than 100 hours of phase observations at mid-latitude during a low solar activity period were gathered. Three different setup configurations were defined to assess the effects multipath or signal strength may have in the quality of the phase observations. In addition, to detect and discard unrealistic fluctuating phase observations, a quality-check was performed.

In the results, good agreement between the slant TEC (sTEC) measurements from the smartphone and the sTEC obtained from a co-located geodetic receiver is presented. Furthermore, the amount and quality of observations discarded by the quality-check are reported, which emphasizes the use of the signal strength to indicate the quality of phase observations. The results indicate that the C/N_0 and multipath are important - when gathering the data from a geodetic antenna, around 80% of the collected data passed a quality threshold. However, collecting data with the addition of an attenuator, or directly from the smartphone antenna, reduced the valid data to below 50%. However, given the ease of use of a smartphone for data collection, even at 50% of data being usable, this shows potential as a useful course of TEC for ionospheric observations.

Keywords: Raw measurements; Ionosphere; STEC; GNSS; Android.

1. Introduction

The access to raw measurements from dual-frequency Global Navigation Satellite System (GNSS) chipsets embedded within smartphones opens a new frontier for positioning, navigation and timing solutions. Combined with the increasing number of smartphones around the globe, the opportunity for future low-cost real-time global atmospheric monitoring services to support precise positioning is real.

Several studies have been recently done exploiting the dual-frequency capabilities for precise positioning based on smartphone observations. Robustelli et al. 2019 performed an analysis on single point positioning (SPP) performance and multipath errors of the Xiaomi Mi8 (Mi8) smartphone, using dual-frequency and multi constellations observations. Psychas et al. 2019 presented SPP and precise point positioning (PPP) results using GPS and Galileo observations, showing the improvements achieved when using dual-frequency over single-frequency positioning. In a similar approach, Chen et al. [2019] presented PPP results from different single frequency smartphones and compared them to the results obtained from the Mi8 dual-frequency smartphone. Fortunato, Critchley-Marrows et al. [2019] evaluated the performance of PPP and real-time kinematic (RTK) in kinematic mode using the Mi8 measurements, and compared them against the NMEA location provided by the smartphone. They achieved an accuracy of a few meters within two minutes of collecting data, showing improvements over the GNSS-only location provided by the smartphone. Furthermore, several previous authors analysed the quality of smartphone-based measurements. Their studies highlighted issues like the duty cycle mechanism and low carrier-to-noise density ratios (C/N_0) [Liu et al., 2019; Gogoi et al., 2019]. These investigations showed that low C/N_0 values even appear for high elevation satellites. Therefore, to better account for the code noise [Banville et al. 2019], they suggested using C/N_0 based weighting schemes instead of the often used elevation weighting for positioning when using smartphone measurements [X. Zhang et al., 2018].

A key factor for smartphone-based positioning, and for smartphone-based ambiguity resolution in particular, is the quality of the antenna. The low quality of the antenna and its non-homogeneous gain-pattern yield high values of local multipath and a large and hard to predict phase biases [Humphreys et al., 2016]. In Geng and Li 2019, the authors investigate the feasibility of resolving ambiguities when using smartphone observations. They evaluate the impact of initial phase biases on ambiguity resolution considering the Mi8 and Huawei Mate20 X devices, showing the use of an external patch antenna as the solution for semi-professional works. A single-frequency PPP solution, using the Huawei Mate20X (Mate20 X), was investigated in [Banville et al., 2019], who found instability in the position-solution caused by the multipath. The problem was tackled using constraints from global ionospheric maps, resulting in reduced accuracy of the positioning and showing the need for network-based precise slant Total Electron Content (sTEC) corrections. Darugna et al. [2019] analysed the RTK and PPP-RTK accuracy using different smartphones in short and long baselines, and achieved mm-level accuracy when fixing ambiguities and removing multipath effects. These results support those presented by [Humphreys et al. 2016], who showed the potential for ambiguity resolution using smartphone measurements, while also underlining the challenges in a real environment with high levels of multipath.

The use of low-cost receivers for ionospheric sensing has not been extensively evaluated. Hernández-Pajares et al. [2018] compared the Total Electron Content (TEC) obtained from single-frequency low-cost receivers against dual-frequency geodetic receivers. B. Zhang et al. [2018] estimated ionospheric vertical TEC and satellite biases with a combination of low-cost and geodetic receivers.

In general, the authors of this paper found one publication only regarding the estimation of ionospheric TEC using dual-frequency smartphone observations. Fortunato et al. [2019] presented a comparison of the change of sTEC over time ($\Delta sTEC / \Delta t$) between measurements from a Mi8 and a co-located geodetic receiver for 15 minutes. They showed that differences below 0.05 TEC units (TECu) in $\Delta sTEC / \Delta t$ could be achieved if a moving median on windows of 5 to 30 seconds is applied.

In this paper, a comparison of sTEC calculated from two different smartphones and a co-located geodetic receiver is reported, to provide a quality analysis of smartphone data for ionospheric sensing. Results from three different experiments with data collected for around 120 hours are compared, evaluating the impact of the strength of the signal and multipath. To the authors knowledge, this is the second such study conducted, with the main improvements being the comparison of performances across three different signal environments and longer time-series.

1.1 Setup and data collection

Dual-frequency code and phase observations from two different smartphones, the Mi8 and the Mate20 X, were collected. Although the Mate20 X employs the HiSilicon Kirin 980 chipset for its platform, both devices are equipped with the Broadcom BCM47755 dual-frequency GNSS chip [Broadcom, 2018], which can track GPS L1/L5, Galileo E1/E5a, QZSS L1/L5, GLONASS L1 and BeiDou B1 signals. In this paper, only the GPS and Galileo constellations are analysed, as dual-frequency signals are generally needed to retrieve the TEC from phase observations.

The data was gathered at Geo++ GmbH in Garbsen, Lower Saxony, Germany. Three different scenarios were defined. The first set of data was collected by placing the smartphone on a geodetic pillar on the rooftop of the company building. This scenario provides observations close to reality, as they are affected by multipath with surrounding surfaces that can reflect the signals. However, the smartphone and geodetic antennas are separated by roughly 10 m and can be affected by different surface reflections.

This setup will be referred to as smartphone-antenna hereafter. The second set of observations was collected inside an RF-enclosure¹ connected to a geodetic antenna on the rooftop, as explained in [Darugna et al. 2019] and depicted in Figure 1. The smartphone was located inside the RF enclosure, and the signals received by the geodetic antenna on the rooftop were re-transmitted inside the enclosure. From the double-difference and positioning analysis carried out in Darugna et al. [2019], we can assume that the reflections within the RF enclosure are all the same for a given signal (e.g. L1). In fact, no additional bias is observed in the double-difference. This set provides an ideal scenario, where far and near-field effects that can influence the smartphone measurements, such as multipath, are minimised. This setup will be referred to as geodetic-antenna hereafter. The third experiment was also performed within the RF enclosure but adding a 13 dB attenuator after the antenna. This last scenario provides carrier-to-noise values closer to a real user-case, but still limits the effects of multipath. This setup will be referred to as geodetic-antenna + attenuator hereafter. The different multipath effects on each scenario are of important consideration. Therefore, no elevation mask is used.



Figure 1. Setup of the experiments carried out in this work. A choke-ring antenna on the roof of the Geo++ GmbH building is connected to a splitter feeding the RF enclosure where the signal is re-transmitted to the smartphone. A 0-13 dB attenuator was applied to the signal re-transmitted to the smartphone. The pillars on the roof were used to collect open-sky data.

¹ A metal box with feedthrough for an SMA (SubMiniature version A) coax cable for a transmitting antenna. The dimensions of the box are 21 cm x 23 cm x 9 cm, while the space between the smartphone and antenna element is roughly 2 cm. The smartphone is lying over non-conductive support.

The Geo++ RINEX Logger [Geo++ GmbH, 2017] was used to retrieve the phase and code observations in RINEX format with a sampling interval of 1 s. All the tests were performed with the “Force full GNSS measurements” feature from the Android smartphone activated on the Mi8. This option allows shutting down the duty cycling, which increases the data availability and continuity of the phase measurements. Although this feature is not available on the Mate20 X, phase measurements were continuously collected, and the duty cycle was therefore assumed to be off during the GNSS observation period [Banville et al. 2019].

Table 1 summarises all the data used within this paper. The measurements were performed during several days with different measurement times.

Location	Total time		DOYs (2019)	
	Mi 8	Mate 20 X	Mi 8	Mate 20 X
Geodetic-antenna	~ 9 h	~ 4 h	122, 123, 157, 158, 170, 171	176, 317
Geodetic-antenna + attenuator	~ 6 h	~ 7 h	324	158, 317
Smartphone-antenna	~ 80 h	~ 5 h	147, 149, 150, 162, 163	234

Table 1. Summary of the tests carried out in this work. Location, total measurement time and day of the year (DOY) of the different experiments with each smartphone are reported.

1.2 TEC measurements from smartphone observations

The geometry-free linear combination was used to obtain sTEC measurements from both geodetic and smartphone phase observations. With phase observations Φ_1 and Φ_5 as L1/E1 and L5/E5a respectively, the geometry-free combination, following Goad [1985], yields:

$$\Phi_{GF} = (\Phi_1 - \Phi_5) \frac{f_{GF}}{40.3 \times 10^{16}} \quad (1)$$

$$\text{with } f_{GF} = \frac{f_1^2 f_5^2}{f_1^2 - f_5^2}$$

where f_1 and f_5 correspond to GPS and Galileo L1/E1 and L5/E5a bands central frequencies, respectively. Φ_{GF} is given in TECu. Eq.1 removes all but the frequency-dependent parameters. Φ_{GF} only depends on the ionospheric sTEC, station dependent errors (e.g. multipath) and phase integer ambiguities and biases.

In order to remove the effect of the unknown integer ambiguity value, in this paper smartphone and geodetic sTEC differences will be used as validation. These are calculated by normalising the sTEC from the entire satellite pass after applying data-continuity filtering techniques, which are introduced later in this section, to the mean sTEC value:

$$\text{sTEC difference} = \Phi_{GF} - \frac{\Sigma \Phi_{GF}}{N_{epoch}} \quad (2)$$

where N_{epoch} is the number of epochs throughout the satellite pass. The mean value was selected to minimise the effect of the smartphone’s phase noise in the normalisation.

For the smartphone measurements, two different data quality techniques to assess the phase observations are compared. The first one is a standard C/N_0 threshold filtering, following [Liu et al. 2019], where the authors recommend discarding measurements below 30 dB Hz C/N_0 when doing positioning using smartphone observations. For this experiment, the C/N_0 threshold value was set at 30 dB Hz.

The second technique is a two-step quality check. This alternative method was developed as not all low observations are unusable, and because high C/N_0 can occur even at low elevations, where the observations may not be suitable for obtaining reliable TEC measurements.

First, all observation gaps caused by the invalid phase observation flag from the Android API, mostly caused by low C/N_0 values and multipath, are identified and catalogued as invalid epoch. Secondly, for the remaining observations, a change in TEC between two epochs higher than a given threshold is identified as cycle slip. Nominal values of TEC change in mid-latitudes for geodetic receivers are 0.01 TECU/s [Zhizhao and Chen, 2009]. Larger changes can occur naturally as manifestations of scintillation, which is unlikely within the ionosphere at mid-latitudes during geomagnetically calm conditions. Considering the phase noise is around 1 second (0.2 TECU for L1) for the data gathered with the smartphone antenna, and that the length of a phase cycle is around 1.1 TECU in L1, in this paper an in-between threshold value of 0.5 TECU/s is selected. To minimise the effect of the cycle-slips, the comparison between geodetic and smartphone sTEC difference is re-initialised after every epoch identified as cycle-slip. Section 2.1 presents the results obtained using this technique.

After the quality check in the smartphone data, all valid sTEC measurements were compared against the sTEC retrieved from the co-located geodetic receiver. In the next section, the results from this comparison are introduced, alongside an analysis of the quality check process.

2. Results

In this section, the data quality evaluation and the sTEC comparison results are shown and discussed. First, the results from the quality analysis of the phase observations retrieved from the smartphones are introduced.

2.1 Quality assessment of smartphone phase observations

The quality check of the smartphone observations was performed as described in Section 1.2. In this section, valid and discarded sTEC measurements from the new quality check method are presented for the data gathered with both the Mate20 X and the Mi8. Results for each frequency from GPS and Galileo, compared to C/N_0 and elevation, are shown. First, in Figures 2 and 3, valid and discarded sTEC measurements from the smartphone-antenna scenario are shown. Secondly, in Figures 4 and 5 the data validation is again compared to C/N_0 and elevation, but for the geodetic-antenna scenario. All the TEC measurements shown in the figures are from satellites transmitting both L1 and L5. The tests were conducted for different periods, ranging from 1 hour to 27 hours. Therefore, Figures 2-5 show results starting from the first epoch of each independent experiment, and not sequentially in time.

In these figures, the relation between the phase quality, the C/N_0 and the elevation can be observed. Most of the discarded observations correspond to low values of C/N_0 at low elevations. However, in Figures 4 and 5, observations with high C/N_0 and elevation are discarded, caused by the unavailability of GPS L5 measurements. The reason behind this problem with L5 and not with L1 might be the use of different antennas for each frequency. Furthermore, the Geo++ RINEX logger does not accept measurements if the phase-validity flag of the Android Application Programming Interface (API) is not set. Another reason might be related to a large uncertainty of the received satellite time [Darugna et al., 2019]. A more in-depth look into the raw-measurements retrieved from the API would be necessary to clarify this specific issue. However, the aim of this paper is to report on the quality evaluation of the available measurements for ionosphere sensing. In Figure 6 an example from G10 and E30 satellites independently for the data gathered with the smartphone-antenna is given.

In this figure, the relation between C/N_0 and data quality is clearer, which is less dependent of the elevation. It is worth mentioning that the quality is assessed to provide sTEC measurements, which are a combination of phase observations from two frequencies. Therefore, even if only one of the frequencies at certain epoch is identified as a loss of lock or a cycle slips, the observation for both frequencies are discarded.

Regarding the constellations, there is an apparent correlation between the data quality and the constellation involved. Even though similar C/N_0 values on L5/E5a and L1/E1 are observed, between 15% and 25% less observations are discarded from Galileo than from GPS. The importance of high C/N_0 , which can be low even at high elevations as seen in Figures 4 and 5, is aligned with the results from the previous research mentioned in Section 1 [e.g. Zhang et al., 2018]. Furthermore, it is interesting to notice that, despite the C/N_0 values being smaller in the smartphone-antenna scenario, no great increase is observed in the percentage of discarded measurements.

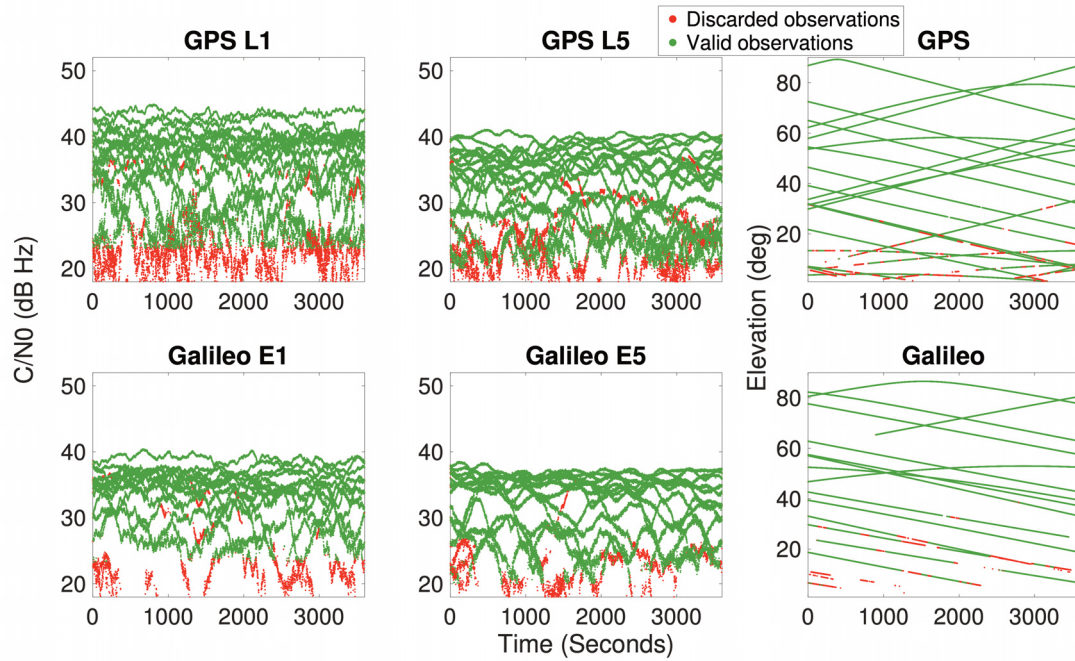


Figure 2. C/N_0 and elevation for valid (green coloured lines) and discarded (red coloured lines) phase measurements gathered in the smartphone-antenna setup with the Mate20 X.

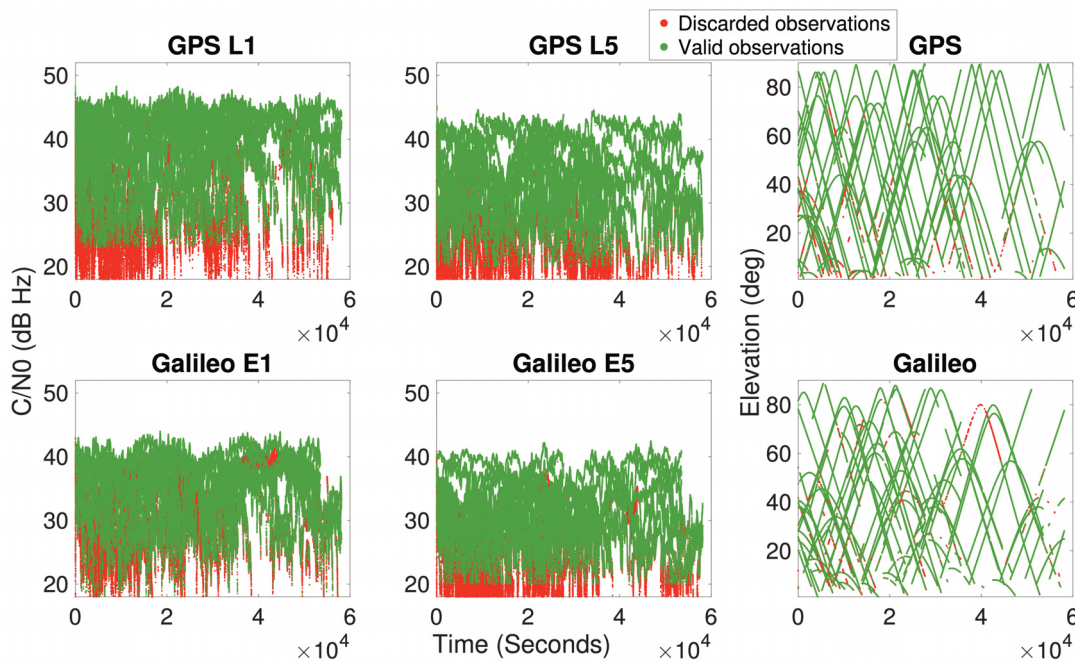


Figure 3. C/N_0 and elevation for valid (green coloured lines) and discarded (red coloured lines) phase measurements gathered in the smartphone-antenna setup with the Mi8.

In the next section, the $sTEC$ measurements from the smartphone are compared to $sTEC$ calculated from the co-located geodetic receiver. It is essential to underline that, in the geodetic-antenna setup (see Figure 7) smartphone and geodetic receiver employ the same geodetic antenna. Therefore, smartphone and geodetic receivers experience the same multipath. However, that is not true for the measurements gathered in the smartphone-antenna scenario (see Figure 8), where the two antennas are separated by roughly 10 m, and are affected by multiple different surface

Smartphone-based ionospheric measurements

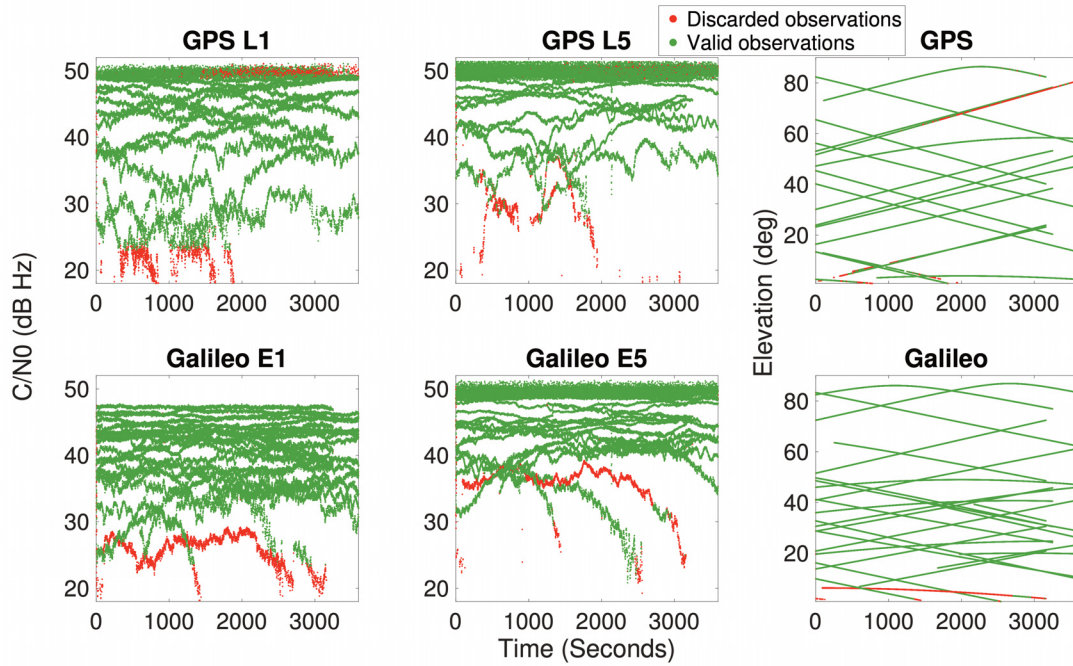


Figure 4. C/N_0 and elevation for valid (green coloured lines) and discarded (red coloured lines) phase measurements gathered in the geodetic-antenna setup with the Mate20 X.

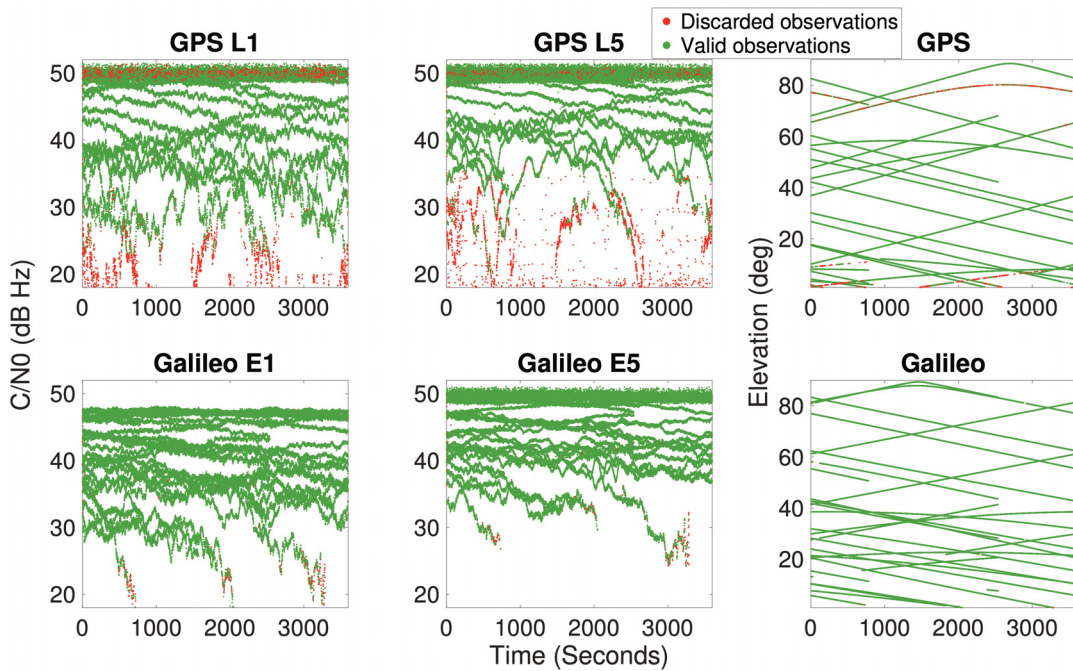


Figure 5. C/N_0 and elevation for valid (green coloured lines) and discarded (red coloured lines) phase measurements gathered in the geodetic-antenna setup with the Mi8.

reflections. Figure 7 depicts a typical low-multipath-environment, where no large fluctuation can be observed for both geodetic-grade receiver and smartphone. On the other hand, Figure 8 shows a difference in the C/N_0 variation between the geodetic receiver and smartphone. In fact, the smartphone's C/N_0 indicates a much more perturbed variation with some sharp jumps. Information about the impact of the station dependent errors, e.g. multipath, on the smartphone measurements and on the positioning results in these scenarios can be found in Darugna et al. [2019].

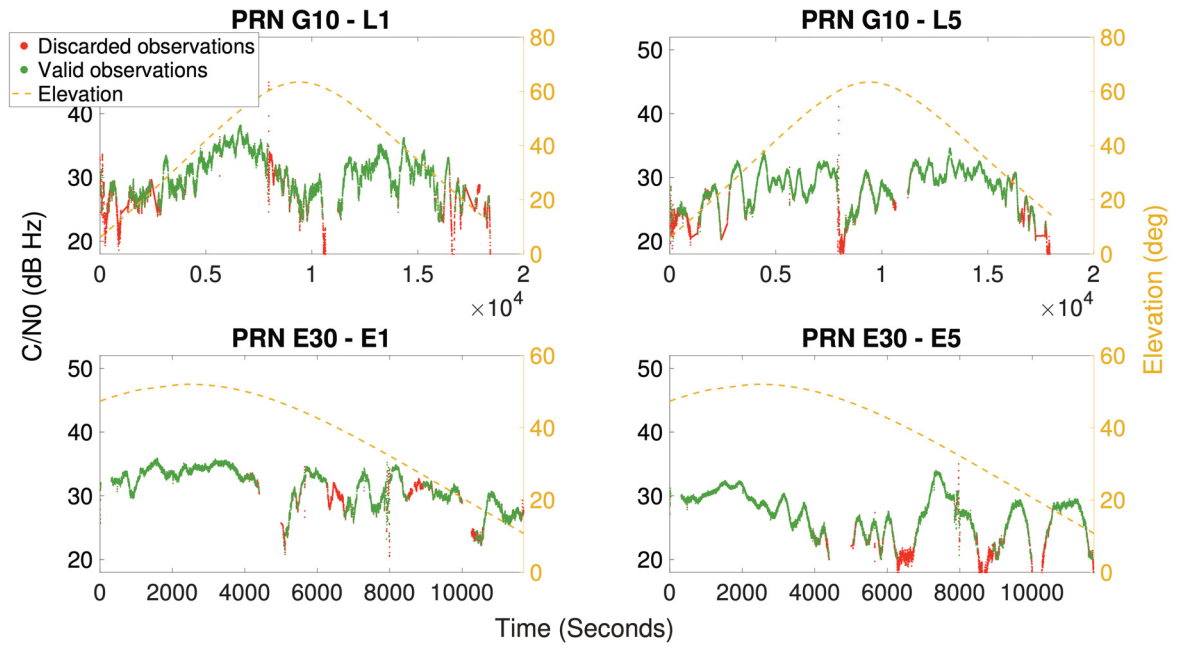


Figure 6. C/N_0 and elevation for valid (green coloured lines) and discarded (red coloured lines) phase measurements for G10 and E30 satellites gathered in the smartphone-antenna setup with the Mi8.

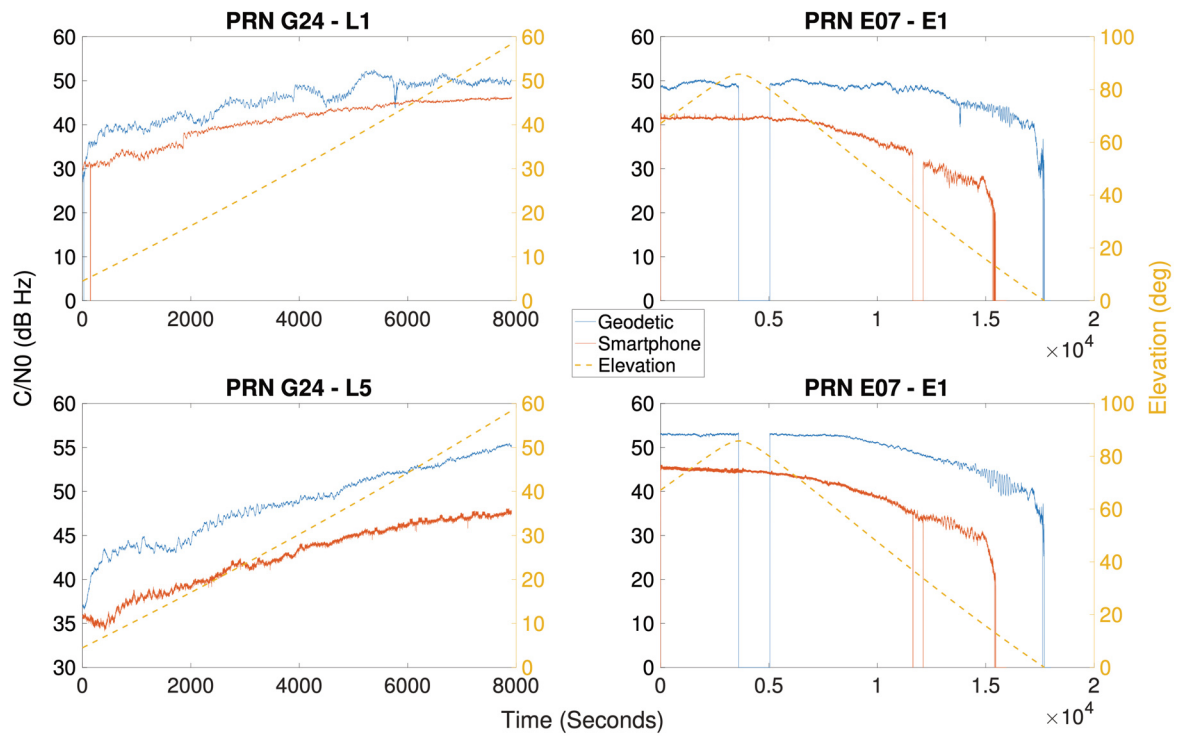


Figure 7. C/N_0 and elevation for G24 and E07 satellites in the geodetic-antenna + attenuator setup for both L1/E1 and L5/E5 frequencies.

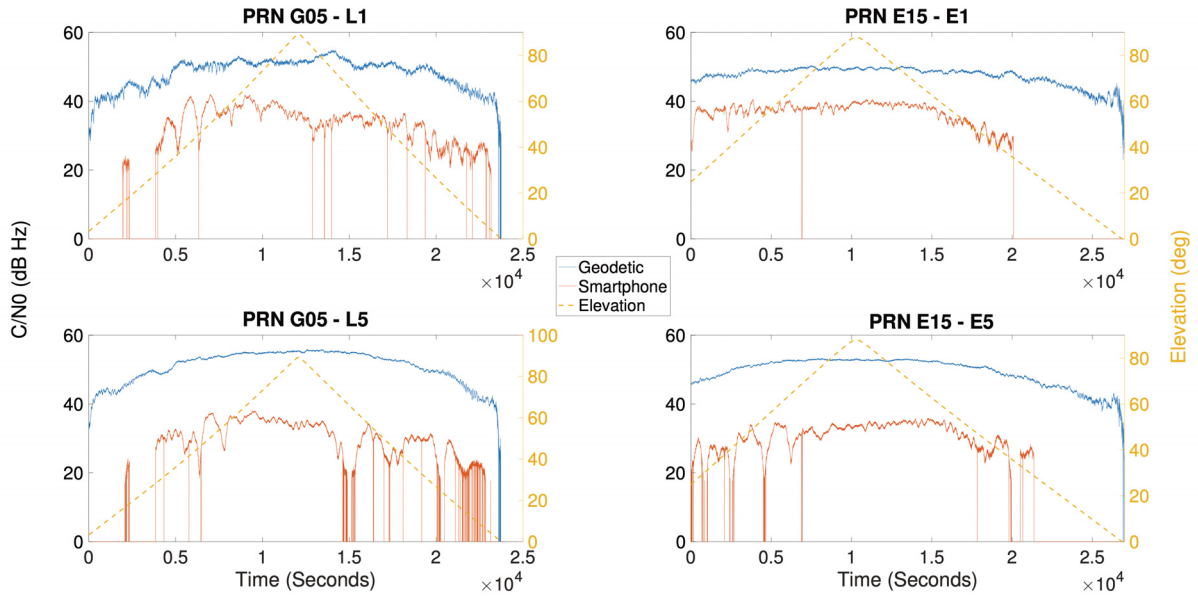


Figure 8. C/N_0 and elevation for G05 and E15 satellites in the smartphone-antenna setup for both L1/E1 and L5/E5 frequencies.

2.2 STEC comparison

In this section, $sTEC$ values computed from all the datasets are introduced. For each of the datasets, $sTEC$ measurements are discarded based on the C/N_0 threshold and the quality-check, and a combination of both. These results are assessed by comparing them with the unfiltered $sTEC$ retrieved from raw observations.

An example of a comparison between $sTEC$ differences from the smartphone after the two-step quality check and geodetic $sTEC$ differences for some GPS and Galileo satellite passes are shown in Figure 9. Geodetic $sTEC$ is re-referenced to the mean value of the arc after each data gap in the smartphone data, as seen in in Figure 9b.

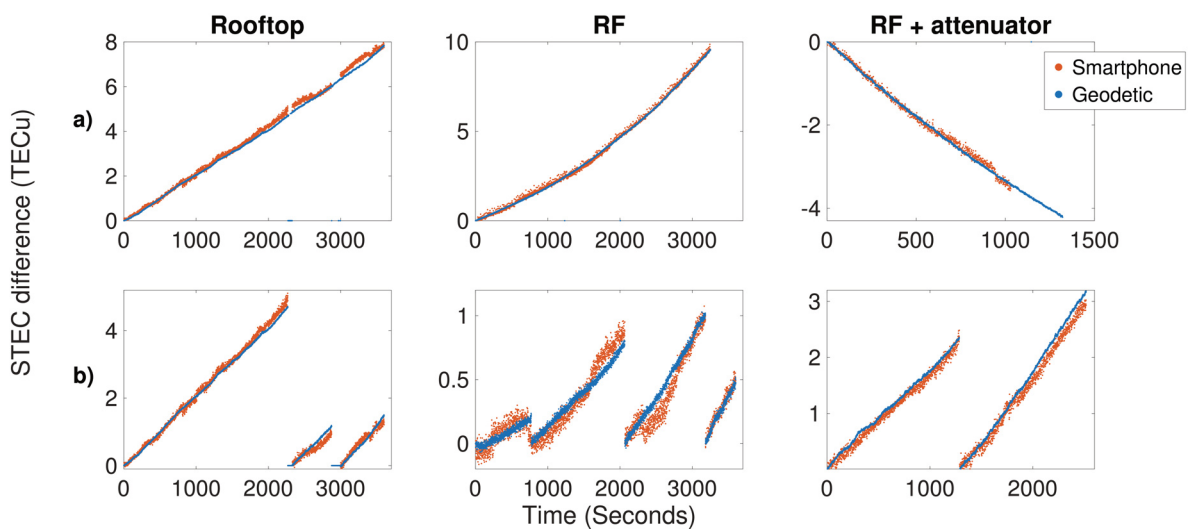


Figure 9. Comparison of $sTEC$ difference from the Mate20 X smartphone and geodetic receiver from all the scenarios. a) panel shows results being in close agreement, whereas panel b) shows results with cycle slips in the smartphone measurements.

Two different behaviours of smartphone sTEC measurements are presented in Figure 9. One type of behaviour, in panel a), shows no cycle-slip effect in the smartphone data. Another type of behaviour, in panel b), presents sTEC differences from cycle-slips in the smartphone phase observations. These differences can reach values up to ~ 100 TECu if the fluctuations in the phase are significant and not properly identified and corrected.

Figures 10 and 11 show the comparison of all smartphone and geodetic sTEC difference measurements of GPS and Galileo satellites respectively. The figures are centred around the geodetic values for comparison. The smartphone sTEC measurements that are not close to the geodetic values are therefore excluded from the figure. Nevertheless, later in Table 2 all results are statistically summarised.

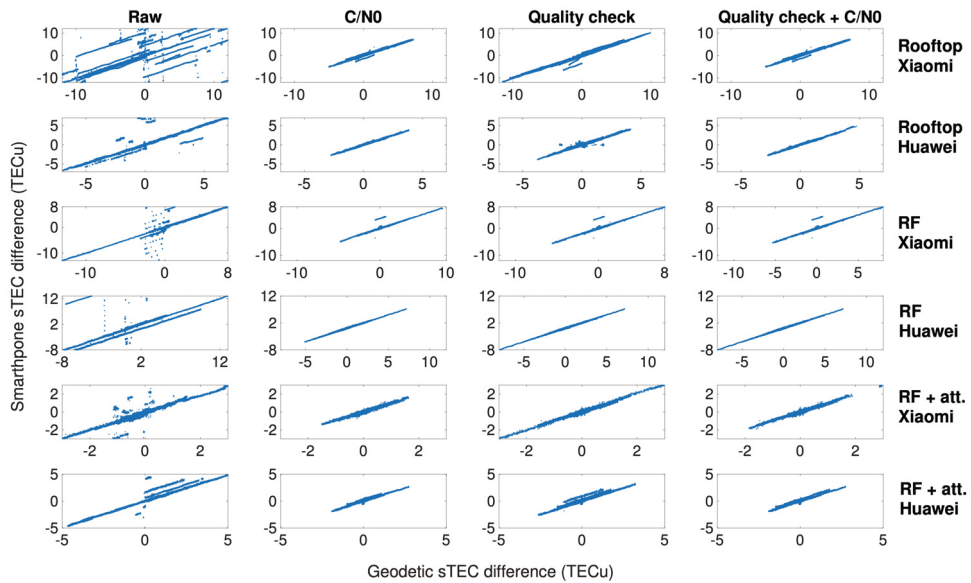


Figure 10. Scatter plot with all the sTEC measurements from the geodetic and smartphone receivers from the GPS constellation.

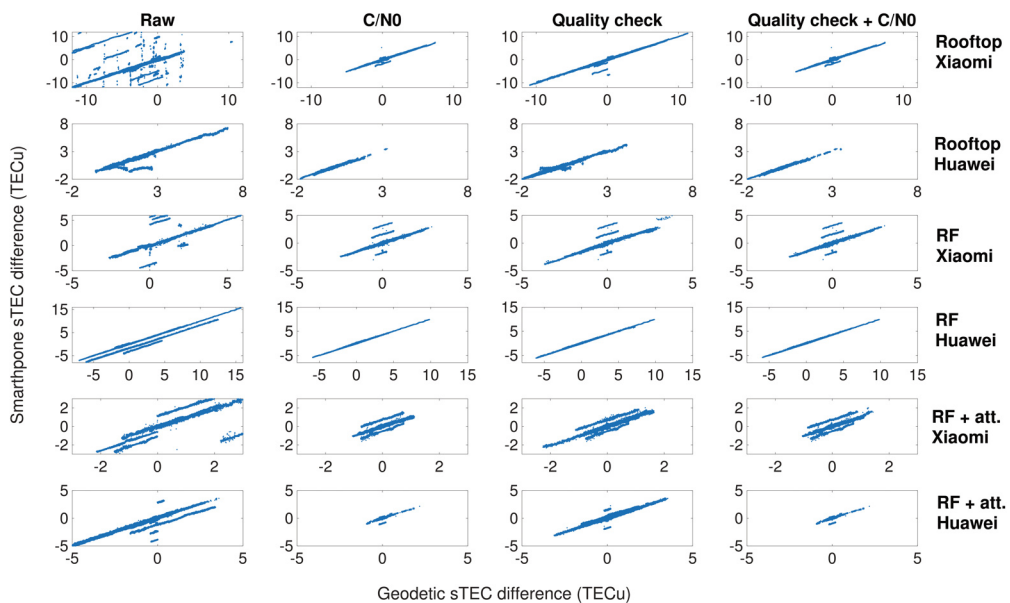


Figure 11. Scatter plot with all the sTEC measurements from the geodetic and smartphone receivers from the Galileo constellation.

Smartphone-based ionospheric measurements

The results of the quality check show excellent agreement with the geodetic measurements, emphasising the improvement achieved by checking the quality of the phase observations. However, the effect of some fluctuations is observed in Figure 10, even after the quality check. Comparing Figure 10 and Figure 11, raw measurements from GPS with the Mi8 seem to have a more stable behaviour than Galileo measurements, but they all show a general agreement and similar behaviour.

In Table 2, a summary of all the results is presented. The percentage of valid measurements after the quality check (if any), RMSE and 95 percentile ($P_{95\%}$) of the differences between smartphone and geodetic sTEC difference are presented. As each sTEC is normalised to the mean value throughout the arc (see Eq.3), the differences show a zero-mean distribution. It is worth mentioning that measurements are only considered in this table when both frequencies are available.

Dataset	Type	Valid data	$P_{95\%}$	RMSE
Smartphone - antenna Mi8	RAW/Unfiltered	100%	155.018	78.581
	C/N_0 - threshold	51.08%	0.240	0.186
	Quality-check	85.78%	0.299	0.360
	C/N_0 + Quality-check	50.28%	0.241	0.187
Smartphone- antenna Mate 20X	RAW/Unfiltered	100%	55.461	23.482
	C/N_0 - threshold	61.42%	0.187	0.0954
	Quality-check	92.21%	0.244	0.138
	C/N_0 + Quality-check	57.11%	0.191	0.0977
Geodetic- antenna Mi8	RAW/Unfiltered	100%	12.064	7.479
	C/N_0 - threshold	82.16%	0.198	0.400
	Quality-check	97.17%	0.236	0.378
	C/N_0 + Quality-check	82.01%	0.225	0.385
Geodetic- antenna Mate 20X	RAW/Unfiltered	100%	0.670	8.871
	C/N_0 - threshold	79.64%	0.159	0.0810
	Quality-check	96.10%	0.171	0.0869
	C/N_0 + Quality-check	79.20%	0.165	0.0847
Geodetic- antenna + attenuator Mi8	RAW/Unfiltered	100%	7.686	4.473
	C/N_0 - threshold	64.05%	0.523	0.188
	Quality-check	89.67%	0.521	0.186
	C/N_0 + Quality-check	62.86%	0.522	0.188
Geodetic- antenna + attenuator Mate 20X	RAW/Unfiltered	100%	33.319	16.084
	C/N_0 - threshold	39.70%	0.302	0.145
	Quality-check	76.59%	0.370	0.214
	C/N_0 + Quality-check	32.80%	0.339	0.149

Table 2. Results summary. All values are presented in TECu.

The poor quality of the smartphone measurements is evident from the values in the table. Without any validation, the RMSE in the smartphone-antenna dataset can reach up to 78 TECu. The use of the geodetic antenna, even with the attenuator, marks an improvement of $\sim 70\%$.

When applying any quality check to the phase observations, these differences decrease dramatically. The use of the C/N_0 threshold to discard data below 30 dB Hz is exceptionally efficient for the data gathered with the Mate20 X in the smartphone-antenna scenario, where the $P_{95\%}$ is improved from 55.461 to 0.187 TECu. For the tests with the Mi8 in the same scenario, the C/N_0 filtering improves the $P_{95\%}$ from values of 155.018 to 0.240 TECu.

Using the geodetic antenna, the difference between the C/N_0 and the two-step quality check is smaller. In the geodetic-antenna + attenuator scenario using the Mi8, where C/N_0 values are closer to the reality, the RMSE is 0.186 TECu, only discarding $\sim 10\%$ of the measurements. In the same scenario, when only applying the C/N_0 threshold, $\sim 30\%$ of the measurements are discarded, without improving the results compared to the two-step validation.

Regarding the comparison between smartphones, the Mate20 X shows better and more stable performance than the Mi8, with more valid data and with higher accuracy when applying the two-step quality check.

Overall, a trade-off between data availability and quality is seen when comparing the results from the C/N_0 filtering and the data-quality check. The C/N_0 threshold provides closer results to the geodetic receiver, but discarding $\sim 15 - 60\%$ more of observations. Differences below 0.1 TECu can be achieved even in the rooftop scenario, where the test was performed as in a possible open-sky user-case scenario. A final comparison can be made w.r.t. the positioning results obtained in Darugna et al. [2019] with the same setups. While for positioning the main quality factor seems to be the multipath, for ionosphere sensing the signal strength has a more remarkable impact on the results. In fact, attenuating the signal going into the RF enclosure marks a decrease of the performance of $\sim 20\%$, while it is still possible to get a RTK ambiguity fixed solution.

3. Conclusions

This study presents a qualitative analysis for measuring the ionospheric total electron content based on more than 100 hours of smartphone phase observations.

The novel two-step quality check method introduced in this paper significantly improves the quality of the data by discarding TEC measurements coming from rapidly fluctuating phase observations. Smartphone measurements in different setups have been gathered. An open-sky scenario on the rooftop and an ideal scenario within an RF enclosure where multipath effects are mostly removed are considered. The results obtained from the comparison between sTEC differences retrieved from smartphone and geodetic receivers in the open-sky scenario show excellent agreement with the results obtained with the geodetic-antenna setup, when any of the filtering techniques is applied. The RMSE is below 0.4 TECu in all the cases.

However, more observations are discarded in the dataset collected with the smartphone antenna. 7.79% and 14.22% are rejected in the smartphone-antenna scenario for the Mate20 X and Mi8 respectively, compared to 3.90% and 2.83% of observations discarded in the geodetic-antenna scenario.

As seen in the geodetic-antenna + attenuator scenario using the Mate20 X, the two-step quality check improves the performance of the C/N_0 filtering. Although similar values of RMSE are obtained, the quality check only discards $\sim 20\%$ of the data. On the other hand, the C/N_0 filtering rejects more than 60% of measurements.

The difference between constellations is also noticeable, with more observations discarded for GPS than for Galileo in all scenarios using both smartphones. This shows the higher quality and phase stability of the Galileo signals.

By looking at the differences in performance between the Huawei and the Xiaomi smartphones, the Mate20 X antenna shows a more stable performance for phase tracking. By comparing the results from all the scenarios using the novel filtering technique, it is found that the Mate20 X performs between 4% and 34% better than the Mi8. Furthermore, while the multipath has a more considerable impact than C/N_0 for positioning applications, the analysis indicates that the strength of the signal affects the sTEC sensing significantly. In fact, the addition of the attenuator deteriorates the sTEC difference results of both smartphones by $\sim 20\%$.

In conclusion, this study has shown the possibility to use smartphone devices for ionospheric TEC monitoring. Additionally, the importance of C/N_0 , multipath, observations gaps and cycle slips for ionospheric sensing has been demonstrated. If these parameters are considered and accounted for, the method described in this paper can be applied to different smartphones, setups and ionospheric conditions. This could enhance the global availability of low-cost ionospheric monitoring instruments.

Acknowledgements. The authors wish to thank the International GNSS Service (IGS) for GNSS orbital data. The authors have received funding from the European Union's Horizon 2020 research and innovation programme under the Marie Skłodowska-Curie Grant Agreement No 722023. Authors acknowledge funding from the NERC NE/P006450/1 agreement.

References

- Banville S., G. Lachapelle, R. Ghoddousi-Fard and P. Gratton (2019). Automated Processing of Low-Cost GNSS Receiver Data, In: Proceedings of the 32nd International Technical Meeting of the Satellite Division of the Institute of Navigation, ION GNSS+ 2019. <https://doi.org/10.33012/2019.16972>.
- Broadcom. n.d., (2019). Broadcom, Broadcom BCM47755 GNSS Chip, Accessed October 1, 2019. <https://www.broadcom.com/products/wireless/gnss-gps-socs/bcm47755>.
- Chen B., C. Gao, Y. Liu and P. Sun (2019). Real-Time Precise Point Positioning with a Xiaomi MI 8 Android Smartphone, *Sensors* (Basel, Switzerland), 19, (12). <https://doi.org/10.3390/s19122835>.
- Darugna F., J. Wübbena, A. Ito, T. Wübbena, G. Wübbena and M. Schmitz (2019). RTK and PPP-RTK Using Smartphones: From Short-Baseline to Long-Baseline Applications, In: Proceedings of the 32nd International Technical Meeting of the Satellite Division of the Institute of Navigation, ION GNSS+ 2019, 3932–45, <https://doi.org/10.33012/2019.17078>.
- Fortunato M., J. Critchley-Marrows, M. Siutkowska, M.L. Ivanovici, E. Benedetti and W. Roberts (2019). Enabling High Accuracy Dynamic Applications in Urban Environments Using PPP and RTK on Android Multi-Frequency and Multi-GNSS Smartphones, In European Navigation Conference, ENC 2019, <https://doi.org/10.1109/EURONAV.2019.8714140>.
- Fortunato M., M. Ravanelli and A. Mazzoni (2019). Real-Time Geophysical Applications with Android GNSS Raw Measurements, *Remote Sensing*, 11, (18), 2113. <https://doi.org/10.3390/rs11182113>.
- Geng J., and G. Li (2019). On the Feasibility of Resolving Android GNSS Carrier-Phase Ambiguities, *J. Geod.*, <https://doi.org/10.1007/s00190-019-01323-0>.
- Geo++ GmbH. n.d. "Geo++ RINEX Logger App.", Accessed October 1, 2019, <http://www.geopp.de/logging-of-gnss-raw-data-on-android/>.
- Goad C. (1985). Precise Relative Position Determination Using Global Positioning System Carrier Phase Measurements in a Non Difference Mode, In 1st. Int. Symp. on Precies Positioning with GPS, 347–56.
- Gogoi N., A. Minetto, N. Linty and F. Dovis (2019). A Controlled-Environment Quality Assessment of Android GNSS Raw Measurements, *Electronics* (Switzerland), <https://doi.org/10.3390/electronics8010005>.
- Hernández-Pajares M., D. Roma-Dollase, M. Garcia-Fernández, R. Orus-Perez and A. García-Rigo (2018). Precise Ionospheric Electron Content Monitoring from Single-Frequency GPS Receivers, *GPS Solutions*, 22, (4), <https://doi.org/10.1007/s10291-018-0767-1>.
- Humphreys T.E., M. Murrian, F. Van Diggelen, S. Podshivalov and K. M. Pesyna (2016). On the Feasibility of Cm-Accurate Positioning via a Smartphone's Antenna and GNSS Chip, In Proceedings of the IEEE/ION Position, Location and Navigation Symposium, PLANS 2016, <https://doi.org/10.1109/PLANS.2016.7479707>.
- Liu W., X. Shi, F. Zhu, X. Tao and F. Wang (2019). Quality Analysis of Multi-GNSS Raw Observations and a Velocity-Aided Positioning Approach Based on Smartphones, *Adv. Space Res.*, <https://doi.org/10.1016/j.asr.2019.01.004>.
- Psychas D., S. Verhagen, X. Liu, Y. Memarzadeh and H. Visser (2019). Assessment of Ionospheric Corrections for PPP-RTK Using Regional Ionosphere Modelling, *Measurement Sci. Technol.*, 30, (1), 014001, 17, <https://doi.org/10.1088/1361-6501/aaefe5>.
- Robustelli U., V. Baiocchi and G. Pugliano (2019). Assessment of Dual Frequency GNSS Observations from a Xiaomi Mi 8 Android Smartphone and Positioning Performance Analysis, *Electronics* (Switzerland), 8, (1), <https://doi.org/10.3390/electronics8010091>.
- Zhang B., P.J.G. Teunissen, Y. Yuan, H. Zhang, and M. Li (2018). Joint Estimation of Vertical Total Electron Content (VTEC) and Satellite Differential Code Biases (SDCBs) Using Low-Cost Receivers, *J. Geod.*, 92 (4), 401–413, <https://doi.org/10.1007/s00190-017-1071-5>.
- Zhang X., X. Tao, F. Zhu, Xiang Shi, and Fuhong Wang (2018). "Quality Assessment of GNSS Observations from

Jon Bruno et al.

an Android N Smartphone and Positioning Performance Analysis Using Time-Differenced Filtering Approach.” GPS Solutions. <https://doi.org/10.1007/s10291-018-0736-8>.

Zhizhao L. and W. Chen (2009). Study of the Ionospheric TEC Rate in Hong Kong Region and Its GPS/GNSS Application, Global Navigation Satellite System: Technology Innovation and Application.

***CORRESPONDING AUTHOR: Jon BRUNO,**

Centre for Space, Atmospheric and Oceanic Science,

Department of Electronic and Electrical Engineering,

University of Bath, UK

e-mail: j.bruno@bath.ac.uk

© 2021 the Istituto Nazionale di Geofisica e Vulcanologia.

All rights reserved