

We appreciate the response to this publication feature and welcome all contributions. Contributions may be sent to José A. Mascorro, our Technical Editor, at his e-mail address: jmascor@tulane.edu. José may also be reached at the Department of Structural and Cellular Biology, Tulane University Health Sciences Center, 1430 Tulane Ave., New Orleans, LA 70112 and Ph: (504) 584-2747 (504) 584-1687

New Resin for Repair of Bell Jar Chips

Owen P. Mills and Matt Huuki*

Michigan Technological University, * Matt's Auto Glass, Houghton, MI
opmills@mtu.edu and mhuuki@global.net

As you ease the bell jar back down onto its seat, past the evaporation fixture, it is quite easy to chip a \$600 jar. Chipped bell jars are a perennial problem in EM labs. They degrade vacuum in evaporators resulting in lower quality films and ultimately shorten the life of the vacuum

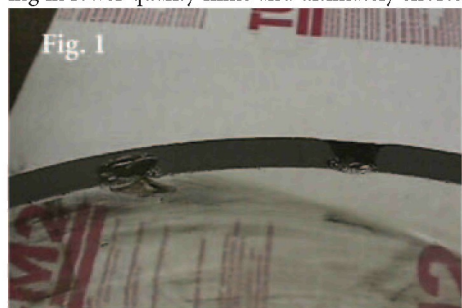


Fig. 1



Fig. 2



Fig. 3

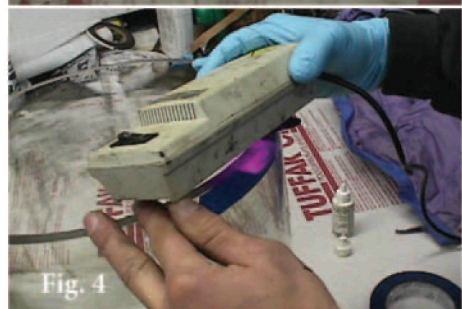


Fig. 4



Fig. 5



Fig. 6

system. This note describes a new resin that I have used for repairing bell jar chips.

A common chip can be seen in Fig. 1. It was caused by crashing the bell jar into the evaporation fixture. The chip is less than 0.5mm deep. Beside it you can see another chip that will not be treated as it does not extend to the jar edge.

IMPORTANT NOTE TO READERS: *It would not be wise to attempt repairs on deep chips of ≥ 0.10 mm or those spreading over 30mm laterally. Finally, DO NOT attempt repairs on cracked bell jars. Bell jars must resist the stress of vacuum and cracked bell jars must be taken out of service.* †

I worked with Matt Huuki, owner of Matt's Auto Glass in Houghton, MI, to repair this bell jar chip. The resin Matt uses is Glas-Weld #2020 Clear Resin. This is the same product he uses to repair rock chips in automotive windshields. It is a UV sensitive resin that sets in an anaerobic environment.

We made the repair as shown in the follow sequence of photos. In Fig. 2 a dam of masking tape is applied to both sides of the jar to contain the thin epoxy. Slightly more resin is applied than needed and a mylar sheet is set over the wet resin in Fig. 3. The UV light is then applied for ~10 minutes (Fig. 4). The UV light is applied for a longer period of time for this bell jar repair since the resin is thicker compared with a windshield chip repair where the resin is normally very thin.

After the UV is applied, the resin is dry and the tape can be removed. Next, the resin can be ground down to the same height as the ground edge of the bell jar. To accomplish this I used 240 grit SiC pressure sensitive adhesive (PSA) backed wet-dry sandpaper that we temporarily

stuck down to a lab bench top. I wet the paper and slid the bell jar back and forth across the wet sandpaper, taking care to keep the bell jar flat against the bench top surface at all times (Fig. 5). The finished repair is shown in Fig. 6.

This is the second jar I have repaired using this technique. Both repaired bell jars hold vacuum and have performed well in all ways. I would recommend this technique to those with shallow chips of small extent. Be aware that your local auto glass repair shop will have no idea what a bell jar is, so be prepared to explain your situation. Better yet, bring this copy of MT with you!

†Please read the Microscopy Today Disclaimer on page 6. This procedure is potentially dangerous. DO NOT ATTEMPT this repair on ANY size bell jar defect without an understanding of the risks involved and your commitment to taking ALL appropriate precautions during the repair process and after the repaired bell jar is returned to service. If you are unsure of the consequences of your actions, don't do it!
... Editor

Inexpensive Digitization of an SEM

Henry C. Aldrich and Donna S. Williams,

University of Florida, Gainesville, FL
haldrich2@cox.net

Because of the high cost of Polaroid film, many years ago we fitted our Hitachi S-450 scanning electron microscope with a 35 mm camera. At that time, we used a Pentax ME Super, which was totally manual and had to have the film advanced by a hand lever. This was an annoyance, but when we set up the system, Polaroid Type 55 film was about \$2.00 per photo, and the cost of 35 mm spooled in our lab ran about \$.10 per photo.

When we traded the Hitachi S-450 for the later Hitachi S-570, we moved the 35 mm system to this microscope. About 1999, when the Pentax ZX-50 with motorized film advance became available, we adapted it to the S-570, using the Pentax electric shutter release. The lens used with both of these cameras was an elderly 50 mm screw-mount Pentax Macro lens that focused well on the CRT of the SEM.

Then, when Canon introduced the Digital Rebel for under \$1000 about a year ago, we convinced a local Canon dealer to lend us one to try on the SEM. It worked quite well, and so we purchased it and converted the Hitachi S-570 to digital photography for about \$1000 - the cost of the Digital Rebel with its standard zoom lens plus the electric cable release. We also purchased an AC adapter to replace the AA batteries. The Rebel uses Compact Flash cards, which can then be removed from the camera and taken to any computer with a card reader to download the images. We have not experimented with other lenses. A dedicated macro lens might produce slightly sharper images, but the standard Rebel zoom lens seems quite adequate. The Canon electric cable release has a locking feature, so